

Female New Doctoral Recipients

The proportion of female new doctoral recipients is 30% essentially unchanged from 31% last year. Of the 1,049 new PhDs hired into academic positions, 31% (320) were women, compared with 30% as last year. Twenty-six percent of those hired into postdoc positions were women, with 42% of the women in postdocs being US citizens, down from 45% last year. The US unemployment rate for females is 6.0%, compared to 5.9% for males and 5.9% overall.

Figure F.1: Females as a Percentage of New Doctoral Recipients Produced by and Hired by Department Grouping

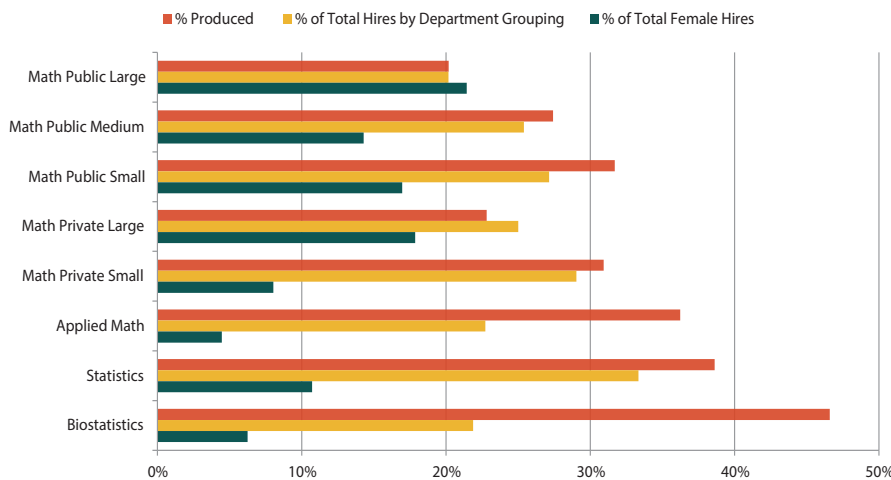


Table F.1: Number of Female New Doctoral Recipients Produced by and Hired by Department Groupings

Department Grouping	Females Produced	Females Hired
Math Public Large	86	24
Math Public Medium	85	16
Math Public Small	77	19
Math Private Large	55	20
Math Private Small	30	9
Applied Math	50	5
Statistics	111	12
Biostatistics	82	7
Total	576	112

- 32% of those hired into US academic positions were female (up from 31% last year).
- 42% of those hired by the Bachelor’s Group were women (same as last year), 38% of those hired by the Master’s Group were women (up from 26% last year), and 24% of those hired by the PhD Math groups combined were women.
- 41% of those hired into Research Institutes/Other non-profit positions were women (up from 26% last year).
- 33% of those hired into Government positions were women (down from 42% last year).
- 60% of the women employed in all doctoral groups are in postdoc positions, compared to 69% of males employed in these groups.

Figure F.2: Females as a Percentage of US Citizen Doctoral Recipients and Graduate Students

