

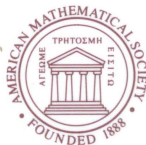
CONTEMPORARY MATHEMATICS

39

Errett Bishop: Reflections on Him and His Research

Proceedings of the Memorial Meeting
for Errett Bishop
September 24, 1983
University of California, San Diego

Murray Rosenblatt
Editor

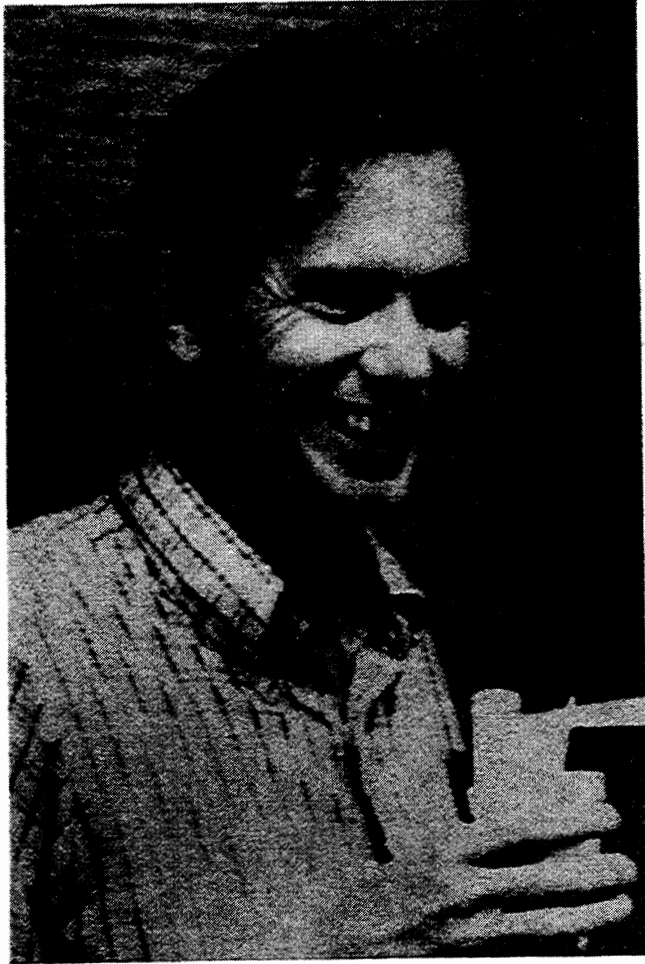


Recent Titles in This Series

- 164 **Cameron Gordon, Yoav Moriah, and Bronislaw Wajnryb, Editors**, Geometric topology, 1994
- 163 **Zhong-Ci Shi and Chung-Chun Yang, Editors**, Computational mathematics in China, 1994
- 162 **Ciro Ciliberto, E. Laura Livorni, and Andrew J. Sommese, Editors**, Classification of algebraic varieties, 1994
- 161 **Paul A. Schweitzer, S. J., Steven Hurder, Nathan Moreira dos Santos, and José Luis Arraut, Editors**, Differential topology, foliations, and group actions, 1994
- 160 **Niky Kamran and Peter J. Olver, Editors**, Lie algebras, cohomology, and new applications to quantum mechanics, 1994
- 159 **William J. Heinzer, Craig L. Huneke, and Judith D. Sally, Editors**, Commutative algebra: Syzygies, multiplicities, and birational algebra, 1994
- 158 **Eric M. Friedlander and Mark E. Mahowald, Editors**, Topology and representation theory, 1994
- 157 **Alfio Quarteroni, Jacques Periaux, Yuri A. Kuznetsov, and Olof B. Widlund, Editors**, Domain decomposition methods in science and engineering, 1994
- 156 **Steven R. Givant**, The structure of relation algebras generated by relativizations, 1994
- 155 **William B. Jacob, Tsit-Yuen Lam, and Robert O. Robson, Editors**, Recent advances in real algebraic geometry and quadratic forms, 1994
- 154 **Michael Eastwood, Joseph Wolf, and Roger Zierau, Editors**, The Penrose transform and analytic cohomology in representation theory, 1993
- 153 **Richard S. Elman, Murray M. Schacher, and V. S. Varadarajan, Editors**, Linear algebraic groups and their representations, 1993
- 152 **Christopher K. McCord, Editor**, Nielsen theory and dynamical systems, 1993
- 151 **Matatyahu Rubin**, The reconstruction of trees from their automorphism groups, 1993
- 150 **Carl-Friedrich Bödigheimer and Richard M. Hain, Editors**, Mapping class groups and moduli spaces of Riemann surfaces, 1993
- 149 **Harry Cohn, Editor**, Doebelin and modern probability, 1993
- 148 **Jeffrey Fox and Peter Haskell, Editors**, Index theory and operator algebras, 1993
- 147 **Neil Robertson and Paul Seymour, Editors**, Graph structure theory, 1993
- 146 **Martin C. Tangora, Editor**, Algebraic topology, 1993
- 145 **Jeffrey Adams, Rebecca Herb, Stephen Kudla, Jian-Shu Li, Ron Lipsman, and Jonathan Rosenberg, Editors**, Representation theory of groups and algebras, 1993
- 144 **Bor-Luh Lin and William B. Johnson, Editors**, Banach spaces, 1993
- 143 **Marvin Knopp and Mark Sheingorn, Editors**, A tribute to Emil Grosswald: Number theory and related analysis, 1993
- 142 **Chung-Chun Yang and Sheng Gong, Editors**, Several complex variables in China, 1993
- 141 **A. Y. Cheer and C. P. van Dam, Editors**, Fluid dynamics in biology, 1993
- 140 **Eric L. Grinberg, Editor**, Geometric analysis, 1992
- 139 **Vinay Deodhar, Editor**, Kazhdan-Lusztig theory and related topics, 1992
- 138 **Donald St. P. Richards, Editor**, Hypergeometric functions on domains of positivity, Jack polynomials, and applications, 1992
- 137 **Alexander Nagel and Edgar Lee Stout, Editors**, The Madison symposium on complex analysis, 1992
- 136 **Ron Donagi, Editor**, Curves, Jacobians, and Abelian varieties, 1992
- 135 **Peter Walters, Editor**, Symbolic dynamics and its applications, 1992
- 134 **Murray Gerstenhaber and Jim Stasheff, Editors**, Deformation theory and quantum groups with applications to mathematical physics, 1992

(Continued in the back of this publication)

Errett Bishop:
Reflections on Him
and His Research



Errett Bishop

CONTEMPORARY MATHEMATICS

39

Errett Bishop: Reflections on Him and His Research

Proceedings of the Memorial Meeting
for Errett Bishop
September 24, 1983
University of California, San Diego

Murray Rosenblatt
Editor



American Mathematical Society
Providence, Rhode Island

EDITORIAL BOARD

R. O. Wells, Jr.,
managing editor
Adriano M. Garsia
James I. Lepowsky

Jan Mycielski
Johannes C. C. Nitsche
Irving Reiner
Alan D. Weinstein

PROCEEDINGS OF THE MEMORIAL MEETING FOR ERRETT BISHOP

HELD AT THE UNIVERSITY OF CALIFORNIA, SAN DIEGO
SEPTEMBER 24, 1983

These proceedings were prepared by the American Mathematical Society with partial support from the National Science Foundation Grant DMS 83-12106.

1991 *Mathematics Subject Classification*. Primary 03F65; Secondary 03A05, 03E25, 03E45, 36A03, 46J10, 46J20, 46J15, 32E10, 32C10.

Library of Congress Cataloging-in-Publication Data

Main entry under title:

Errett Bishop: reflections on him and his research.

Bibliography: p.

Contents: Vita of Errett Bishop—Publications of Errett Bishop—Schizophrenia in contemporary mathematics/Errett Bishop—[etc.]

1. Function algebras—Addresses, essays, lectures. 2. Mathematics—Philosophy—Addresses, essays, lectures. 3. Bishop, Errett, d. 1983—Addresses, essays, lectures. I. Rosenblatt, Murray. II. Bishop, Errett, d. 1983.

QA326.E75 1984

510

85-752

ISBN 0-8218-5040-7

Copying and reprinting. Individual readers of this publication, and nonprofit libraries acting for them, are permitted to make fair use of the material, such as to copy an article for use in teaching or research. Permission is granted to quote brief passages from this publication in reviews, provided the customary acknowledgment of the source is given.

Republication, systematic copying, or multiple reproduction of any material in this publication (including abstracts) is permitted only under license from the American Mathematical Society. Requests for such permission should be addressed to the Manager of Editorial Services, American Mathematical Society, P.O. Box 6248, Providence, Rhode Island 02940-6248. Requests can also be made by e-mail to reprint-permission@math.ams.org.

The owner consents to copying beyond that permitted by Sections 107 or 108 of the U.S. Copyright Law, provided that a fee of \$1.00 plus \$.25 per page for each copy be paid directly to the Copyright Clearance Center, Inc., 222 Rosewood Drive, Danvers, Massachusetts 01923. When paying this fee please use the code 0271-4132/94 to refer to this publication. This consent does not extend to other kinds of copying, such as copying for general distribution, for advertising or promotional purposes, for creating new collective works, or for resale.

© Copyright 1985 by the American Mathematical Society. All rights reserved.

The American Mathematical Society retains all rights except those granted to the United States Government.

Printed in the United States of America.

♻ The paper used in this book is acid-free and falls within the guidelines established to ensure permanence and durability.

♻ Printed on recycled paper.

All articles in this volume were printed from copy prepared by the authors.

10 9 8 7 6 5 4 3 2 99 98 97 96 95 94

CONTENTS

Preface	ix
Association of Authors	xi
Vita of Errett Bishop	xiii
Publications of Errett Bishop	xv
Schizophrenia in Contemporary Mathematics Errett Bishop	1
Errett Bishop - In Memoriam Stefan Warschawski	33
The Work of Errett Bishop in Several Complex Variables John Wermer	41
Recollections John Kelley	51
Aspects of Constructive Analysis Halsey Royden	57
The Work of Errett Bishop and Uniform Algebras Irving Glicksberg	65
Remembrances of Errett Bishop Anil Nerode, George Metakides and Robert Constable	79
On Bishop's Hahn-Banach Theorem G. Metakides, A. Nerode and R. A. Shore	85

PREFACE

Errett Bishop was distinguished for his mathematical work on function algebras and the foundations of mathematics. His research on function algebras and complex analysis was universally recognized. The research on foundations which came later was also remarkable. As is well known, many people have very strong opinions concerning foundations. The object here is to present a view of Errett Bishop as an individual, a colleague to many of us, and as a mathematician. A vita of Bishop is first given with a listing of his mathematical papers. This is followed by a paper of Bishop's titled "Schizophrenia in contemporary mathematics." This paper was distributed in conjunction with the Colloquium Lectures he delivered in 1973 at the Seventy-Eighth Meeting of the American Mathematical Society.

Bishop died April 14, 1983 at his home in La Jolla after a brief illness. The Mathematics Department of the University of California, San Diego, organized a meeting September 24, 1983 in his memory at which a number of his former colleagues were invited to speak about him and his work. They were Stefan Warschawski of UCSD, John Wermer of Brown University, John Kelley of UC Berkeley, Irving Glicksberg of the University of Washington, and Gabriel Stolzenberg of Northeastern University. Unfortunately Stolzenberg withdrew his paper on Errett Bishop. Other than that the papers are printed in full after Errett Bishop's paper. At the memorial meeting a scholarship in mathematics in Errett Bishop's name was established at UCSD, funded by a gift of his mother Mrs. Helen Bishop. To our sorrow, Irving Glicksberg died shortly after his manuscript of his paper was completed. Thanks are due to the Mathematics Department and the administration of UCSD for help in organizing the memorial meeting. A last paper on Bishop's work written by Metakides, Nerode and Shore concludes this selection of papers. This is preceded by a short paper of Nerode, Metakides and Constable on remembrances of Errett Bishop. Errett Bishop is survived by his wife Jane, his two sons, Edward and Thomas, and his daughter Rosemary.

La Jolla, California, 1984

Murray Rosenblatt



Some participants in the memorial meeting for Bishop. From left to right: I. Glicksberg, J. Wermer, S. Warschawski, H. Royden, J. Kelly, and M. Rosenblatt.

ASSOCIATION OF AUTHORS

Errett Bishop	Mathematics Department University of California, San Diego
Robert Constable	Computer Science Department Cornell University
Irving Glicksberg	Mathematics Department University of Washington, Seattle
John Kelley	Mathematics Department University of California, Berkeley
George Metakides	University of Patras
Anil Nerode	Mathematics Department Cornell University
Halsey Royden	Mathematics Department Stanford University
Richard Shore	Mathematics Department Cornell University
Stefan Warschawski	Mathematics Department University of California, San Diego
John Wermer	Mathematics Department Brown University

VITA

Errett Bishop was born July 14, 1928. He received a Bachelor of Science degree in 1947, a Master of Science in 1949, and a Ph. D. in 1955 all from the University of Chicago. From 1950 to 1952 he was in the U.S. Army stationed at the Bureau of Standards in Washington, D. C. carrying out mathematical research in ordnance. His academic positions are listed:

Instructor of Mathematics 1954-1957

Assistant Professor of Mathematics 1957-1959

Associate Professor of Mathematics 1959-1962

Professor of Mathematics 1962-1965

all at the University of California, Berkeley.

Professor of Mathematics 1965-1983

University of California, San Diego.

Bishop held a Sloan Foundation Fellowship from 1958 to 1961. In 1961-1962 he was a member of the Institute for Advanced Study at Princeton. He was a Miller Fellow during the year 1964-1965. Bishop gave a number of distinguished invited lectures, among them an invited talk to the International Congress of Mathematicians at Moscow, USSR (1966), the Hedrick lectures of the Mathematical Association of America (1969), and the Colloquium Lectures of the American Mathematical Society (1973). He was elected a fellow of the American Academy of Arts and Sciences. His doctoral students at UCSD were James D. Brom (1974), Yuen-Kwok Chan (1969), Henry Cheng (1971), Merrill B. Goldberg (1969), John A. Nuber (1969) and Jonathan B. Tennenbaum (1973).

PUBLICATIONS OF ERRETT BISHOP

1. "Spectral theory for operators on a Banach space," *Trans. Amer. Math. Soc.*, 86, No. 2 (November 1957), 414-445.
2. "Subalgebras of functions on a Riemann surface," *Pacific J. Math.*, 8, No. 1 (1958).
3. "Measures orthogonal to polynomials," *Proc. Nat'l. Acad. Sci.*, 44, No. 3 (March 1958), 278-280.
4. "The structure of certain measures," *Duke Math. J.*, 25, No. 2 (June 1958), 283-290.
5. "Approximation by a polynomial and its derivatives on certain closed sets," *Proc. Amer. Math. Soc.*, 9, No. 6 (December 1958), 946-953.
6. "A duality theorem for an arbitrary operator," *Pacific J. Math.*, 9, No. 2 (1959).
7. "A minimal boundary for function algebras," *Pacific J. Math.*, 9, No. 3 (1959).
8. "Some theorems concerning function algebras," *Bull. Amer. Math. Soc.*, 65, No. 2 (March 1959), 77-78.
9. (with Karel de Leeuw) "The representations of linear functionals by measures on sets of extreme points," *Annales de L'Institut Fourier*, 9 (1959).
10. "Simultaneous approximation by a polynomial and its derivatives," *Proc. Amer. Math. Soc.*, 10, No. 5 (October 1959), 741-743.
11. "Boundary measures of analytic differentials," *Duke Math. J.*, 27, No. 3 (September 1960), 331-340.
12. "A generalization of the Stone-Weierstrass Theorem," *Pacific J. Math.*, 11, No. 3 (1961).
13. (with R. R. Phelps) "A proof that every Banach space is subreflexive," *Bull. Amer. Math. Soc.*, 67, No. 1 (January 1961), 97-98.
14. "Mappings of partially analytic spaces," *Amer. J. Math.*, 83, No. 2 (April 1961), 209-242.

15. "Some global problems in the theory of functions of several complex variables," *Amer. J. Math.*, 83, No. 3 (July 1961), 479-498.
16. "Partially analytic spaces," *Amer. J. Math.*, 83, No. 4 (October 1961), 669-692.
17. "A general Rudin-Carleson Theorem," *Proc. Amer. Math. Soc.*, 13, No. 1 (February 1962), 140-143.
18. "Analytic functions with values in a Frechet space," *Pacific J. Math.*, 12, No. 4 (1962).
19. "Analyticity in certain Banach algebras," *Trans. Amer. Math. Soc.*, 102, No. 3 (March 1962), 507-544.
20. (with R. R. Phelps) "The support functionals of a convex set," *Proc. Symposia in Pure Math.*, VII (1963).
21. "Holomorphic completions, analytic continuations and the interpolation of semi-norms," *Annals of Math.*, 78, No. 3 (November 1963), 468-500.
22. "Representing measures for points in a uniform algebra," *Bull. Amer. Math. Soc.*, 70, No. 1 (January 1964), 121-122.
23. "Conditions for the analyticity of certain sets," *Mich. Math. J.*, 11 (1964), 289-304.
24. "Uniform algebras," *Proc. Conf. on Complex Analysis, Minneapolis (1964)*.
25. "Differentiable manifolds in complex Euclidean space," *Duke Math. J.*, 32, No. 1 (March 1965), 1-22.
26. *Constructive Methods in the Theory of Banach Algebras, in Function Algebras, 1966.*
27. "An upcrossing inequality with applications," *Mich. Math. J.*, 13 (1966), 1-13.
28. *Foundations of Constructive Analysis, McGraw-Hill Book Company, 1967.*
29. "A constructivization of abstract mathematical analysis," *Proc. Inter. Congress Math.*, Moscow, 1966.
30. "Mathematics as a numerical language, intuitionism and proof theory," in *Proc. Conf. Buffalo, New York, 1968*, pp. 53-71. North Holland, Amsterdam, 1970.
31. (with Henry Cheng) "Constructive Measure Theory," to appear in *Memoirs, Amer. Math. Soc.*

32. "The crisis in contemporary mathematics," *Historia Mathematica*, 2 (1975), 507-517.
33. Review of "Elementary Calculus," by H. Jerome Keisler, to appear in *Amer. Math. Monthly*.
34. *Schizophrenia in contemporary mathematics*, lecture.

Recent Titles in This Series

(Continued from the front of this publication)

- 133 Alan Adolphson, Steven Sperber, and Marvin Tretkoff, Editors, *p*-Adic methods in number theory and algebraic geometry, 1992
- 132 Mark Gotay, Jerrold Marsden, and Vincent Moncrief, Editors, Mathematical aspects of classical field theory, 1992
- 131 L. A. Bokut', Yu. L. Ershov, and A. I. Kostrikin, Editors, Proceedings of the International Conference on Algebra Dedicated to the Memory of A. I. Mal'cev, Parts 1, 2, and 3, 1992
- 130 L. Fuchs, K. R. Goodearl, J. T. Stafford, and C. Vinsonhaler, Editors, Abelian groups and noncommutative rings, 1992
- 129 John R. Graef and Jack K. Hale, Editors, Oscillation and dynamics in delay equations, 1992
- 128 Ridgley Lange and Shengwang Wang, New approaches in spectral decomposition, 1992
- 127 Vladimir Olikier and Andrejs Treibergs, Editors, Geometry and nonlinear partial differential equations, 1992
- 126 R. Keith Dennis, Claudio Pedrini, and Michael R. Stein, Editors, Algebraic *K*-theory, commutative algebra, and algebraic geometry, 1992
- 125 F. Thomas Bruss, Thomas S. Ferguson, and Stephen M. Samuels, Editors, Strategies for sequential search and selection in real time, 1992
- 124 Darrell Haile and James Osterburg, Editors, Azumaya algebras, actions, and modules, 1992
- 123 Steven L. Kleiman and Anders Thorup, Editors, Enumerative algebraic geometry, 1991
- 122 D. H. Sattinger, C. A. Tracy, and S. Venakides, Editors, Inverse scattering and applications, 1991
- 121 Alex J. Feingold, Igor B. Frenkel, and John F. X. Ries, Spinor construction of vertex operator algebras, triality, and $E_8^{(1)}$, 1991
- 120 Robert S. Doran, Editor, Selfadjoint and nonselfadjoint operator algebras and operator theory, 1991
- 119 Robert A. Melter, Azriel Rosenfeld, and Prabir Bhattacharya, Editors, Vision geometry, 1991
- 118 Yan Shi-Jian, Wang Jiagang, and Yang Chung-chun, Editors, Probability theory and its applications in China, 1991
- 117 Morton Brown, Editor, Continuum theory and dynamical systems, 1991
- 116 Brian Harbourne and Robert Speiser, Editors, Algebraic geometry: Sundance 1988, 1991
- 115 Nancy Flournoy and Robert K. Tsutakawa, Editors, Statistical multiple integration, 1991
- 114 Jeffrey C. Lagarias and Michael J. Todd, Editors, Mathematical developments arising from linear programming, 1990
- 113 Eric Grinberg and Eric Todd Quinto, Editors, Integral geometry and tomography, 1990
- 112 Philip J. Brown and Wayne A. Fuller, Editors, Statistical analysis of measurement error models and applications, 1990
- 111 Earl S. Kramer and Spyros S. Magliveras, Editors, Finite geometries and combinatorial designs, 1990
- 110 Georgia Benkart and J. Marshall Osborn, Editors, Lie algebras and related topics, 1990
- 109 Benjamin Fine, Anthony Gaglione, and Francis C. Y. Tang, Editors, Combinatorial group theory, 1990
- 108 Melvyn S. Berger, Editor, Mathematics of nonlinear science, 1990
- 107 Mario Milman and Tomas Schonbek, Editors, Harmonic analysis and partial differential equations, 1990
- 106 Wilfried Sieg, Editor, Logic and computation, 1990

(See the AMS catalog for earlier titles)

ISBN 0-8218-5040-7



9 780821 850404