



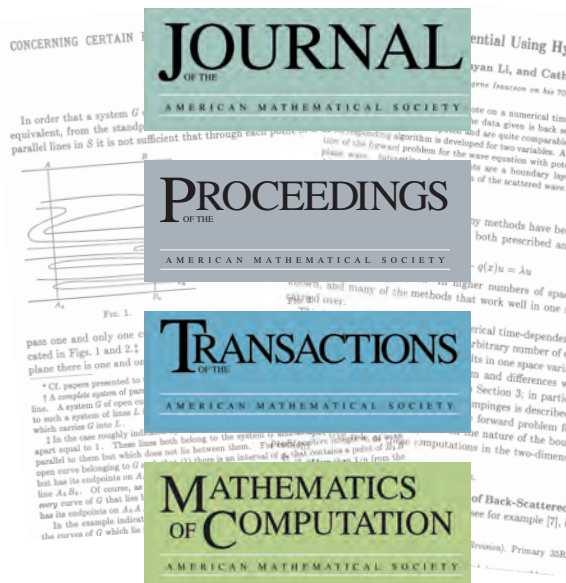
NEWSLETTER

A PUBLICATION FROM THE
AMS PUBLIC AWARENESS
OFFICE TO INFORM MEMBERS
ABOUT SOCIETY ACTIVITIES
AND NEWS

AMS Research Journals Archive is Digitized

The American Mathematical Society has established a complete digital archive of its mathematical research journals. Over 34,000 articles are available from more than one hundred years of high-quality mathematical research in *Journal of the AMS*, *Mathematics of Computation*, *Proceedings of the AMS*, *Transactions of the AMS*, and *Bulletin of the AMS*. All back issues, starting with each journal's inaugural issue through 2005, are now freely available in electronic format. Researchers can browse the contents of each journal to find articles and authors in each volume and issue and search across the entire archive by journal or group of journals. The AMS makes the recent addition of these four research journals (JAMS, MCOM, PROC, TRAN) to the archive freely available to all mathematicians through the generosity of an anonymous donor.

[Read more](#) Search across all the journals at www.ams.org/joursearch/ or link to each individual journal to search its archive at www.ams.org/journals/.



INSIDE THIS ISSUE

- AMS Research Journals Archive is Digitized
- 2010 Mathematics Research Communities
- 2010 Report and Survey on Employment
- Mathematical Moments
- Women Doing Mathematics Poster
- 2010-2011 AMS Fellowship and Grant Recipients
- AMS Website Redesigned
- AMS on Social Networks

2010 Mathematics Research Communities



Comments from participants:

“The week was an amazing experience. I learned a lot, discovered interesting results with my group, and really benefited from the quality time the organizers gave me.”

“At this conference we met in small groups to work on research projects. This was an excellent experience, particularly for a young researcher like myself trying to establish a professional network.”

printed on paper that's 50% recycled, 25% postconsumer waste

The 2010 Mathematics Research Communities (MRCs) were *Birational Geometry and Moduli Spaces*, organized by **Dan Abramovich, Izzet Coskun, Tommaso de Fernex, Angela Gibney and James McKernan**, assisted by **Emanuele Macri**; *Model Theory of Fields*, organized by **Antoine Chambert-Loir, Françoise Delon, Ehud Hrushovski, François Loeser, Thomas Scanlon and Carol Wood**; and *Commutative Algebra*, organized by **David Eisenbud, Craig Huneke, Mircea Mustață and Claudia Polini**.

The MRC summer conferences, funded by the National Science Foundation, creates research cohorts of young mathematicians that, over time, foster joint research and coherent research programs reaching into all areas of mathematics.



“It was a great privilege to spend a week discussing mathematics with so many fantastic, enthusiastic, young mathematicians. The mountains and waterfalls provided the perfect setting for the math. Every mathematician should experience this magic at least once in their lives.”

— Izzet Coskun, co-organizer, *Birational Geometry and Moduli Spaces*

Read more See highlights of the 2010 MRCs at www.ams.org/programs/research-communities/mrc-2010-highlights.

2010 Report and Survey on Employment

Data collected this March by the AMS from approximately 60 mathematics departments in the U.S. show that the number of open full-time academic positions requiring a PhD in 2010 is down 57% since 2008. The report is online, with the survey summary, data on total and new doctorate recruitment, and a list of participating respondents and their comments. The 2010 survey was done to follow up on the 2009 survey designed to help gauge the severity of the employment situation.

Read more The 2010 survey is at www.ams.org/profession/employment-services/Fac-recruit-survey.pdf. The 2009 survey is at www.ams.org/prof-services/employtaskforce/ETF.html.

Mathematical Moments

The most recent Mathematical Moments include *Assigning Seats* (on apportioning the House of Representatives), *Knowing Rogues* (on rogue waves), *Creating Something out of (Next to) Nothing* (on compressed sensing), *Adding Depth* (on creating 3D films), and *Getting at the Truth* (on investigating human rights abuses and election fraud).



Read more Download and print pdfs and listen to more podcasts at www.ams.org/mathmoments.

Women Doing Mathematics Poster

The poster, created to inform and inspire students, features women who are doing mathematics: **Andrea L. Bertozzi, Maria Chudnovsky, Sommer Gentry, Rebecca Goldin, Trachette Jackson, Bryna Kra, Ivelisse Rubio, Abigail Thompson and Melanie Wood**. To request a complimentary copy of the poster please email paoffice@ams.org with subject line “women-poster-fall”.



Read more Download and request other AMS posters at www.ams.org/posters.

2010-2011 AMS Fellowship and Grant Recipients

AMS Congressional Fellow



Hugh MacMillan will be the Congressional Fellow for 2010-2011, sponsored by the AMS through the program administered by the American Association for the Advancement of Science. He earned his PhD in applied mathematics from the University of Colorado at Boulder and most recently worked as an assistant professor at Clemson University.

The fellowship provides a unique public policy learning experience, to demonstrate the value of science-government interaction, and to bring a technical background and external perspective to the decision-making process in Congress.

[Read more](#) Learn about the Congressional Fellowship at fellowships.aaas.org/02_Areas/02_index.shtml#1.

AMS Mass Media Fellow

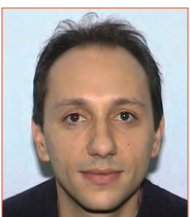


Benjamin Pittman-Polletta, a PhD student at the University of Arizona, is the Society's 2010 Mass Media Fellow. His fellowship was at the *Oregonian* for ten weeks this summer.

The Mass Media Science & Engineering Fellowship program is organized by the American Association for the Advancement of Science. It is a highly competitive program designed to improve public understanding of science and technology by placing advanced science, mathematics and engineering students in newsrooms nationwide.

[Read more](#) Learn more about the program and how to apply at www.aaas.org/programs/education/MassMedia/.

AMS Centennial Fellow



Joël Bellaïche, of Brandeis University, is the 2010-2011 Centennial Fellow. His main interest is in the Birch and Swinnerton-Dyer conjecture and, more generally, the Bloch-Kato conjectures. His approach uses the theory of automorphic forms. Next year he plans to work on higher-rank p -adic L functions and their relations with the universal families of automorphic forms called eigenvarieties.

The AMS Centennial Research Fellowship Program makes awards annually to outstanding mathematicians to help further their careers in research.

[Read more](#) See eligibility requirements for the 2011-2012 fellowship at www.ams.org/programs/ams-fellowships/centennial-fellow/emp-centflyer.

Zhengfeng Yang and Pingzheng Zhang receive Fan Travel Grants

The AMS has awarded US\$2,500 to the Department of Mathematics, North Carolina State University to support a visit by **Zhengfeng Yang** (East China Normal University) and US\$3,480 to the Department of Mathematics, The University of Texas at Arlington to support a visit by **Pingzheng Zhang** (Department of Mathematics, University of Jiangsu).

Zhengfeng Yang will be collaborating with Prof. Erich Kaltofen on a project "on certifying global numerical optima of polynomial optimization problems". The visit is also intended to establish a new scientific link on certification in numerical computing between Kaltofen and his group and Yang's group. Pingzheng Zhang will be collaborating with Prof. Yue Liu, working on some remaining issues concerning recent advances on several open problems related to the Camassa-Holm equation and systems and the Degasperis-Procesi equation.

The Ky and Yu-Fen Fan Fund Travel Grants support travel of mathematical scientists at institutions in the U.S. or Canada on visits to research colleagues in China and to support travel of mathematical scientists from China to the U.S. or Canada for visits with U.S. or Canadian research colleagues at U.S. or Canadian institutions.

[Read more](#) See the award guidelines and application information at www.ams.org/programs/travel-grants/china-exchange.

AMS Website Redesigned

The AMS has launched its newly redesigned website. Based on input from the mathematics community, the new website implements many changes to help users find relevant information and complete their web-based tasks more effectively. Some of the new features include "personas" that users can select to see focused content, searchable FAQ & news, more social networking sharing options, and the ability to translate pages into different languages. The new website is designed to ensure the best experience possible for its users.

The screenshot shows the AMS website interface. At the top, there is a navigation bar with links for Publications, Meetings, The Profession, Membership, Programs, Math Samplings, Policy and Advocacy, In the News, and About the AMS. Below this is a main content area featuring a large banner for "Fostering Awareness and Appreciation of Mathematics" with a photo of a woman speaking at a podium. To the left of the banner is a sidebar with "Information for" categories like Authors, Faculty, Librarians, etc. To the right is a "Quick Links" section. Below the banner are three columns of content: "Serving the Community" with an "MRC Update" about the 2010 Mathematics Research Communities conference; "In the News" with a quote about the conference; and "Publishing Highlights" with "Notices of the AMS" featuring an article about the Mathematical Biosciences Institute.

[Read more](#) Explore www.ams.org

201 Charles Street
Providence, Rhode Island 02904-2294 USA

AMS MEMBER NEWSLETTER

AMS on Social Networks



As part of the Society's commitment to the open flow of communication and community engagement, the AMS uses several social networking tools to supplement the channels currently in place for members, press, and the general public. We invite you to follow and share content of interest.

“Like” us—and find others who “Like” the AMS—at our AMS Facebook page.

Follow us on Twitter.

Read and contribute to the Graduate Student Blog at mathgradblog.williams.edu/ .

Subscribe to our videos, share them, comment on them, and embed them in your own sites from the AMS YouTube channel.

Set up an RSS feed to receive content electronically whenever it is updated on the AMS website.

We invite you to use these networks to find news, updates on AMS programs, commentary, and contests; to connect with others who have similar interests; and to communicate with each other and the AMS. Link from www.ams.org .

[Read more](http://www.ams.org/about-us/social) www.ams.org/about-us/social .