

Preliminary Report on the 2013–2014 New Doctoral Recipients

William Yslas Vélez, James W. Maxwell, and Colleen Rose

This report presents a statistical profile of recipients of doctoral degrees awarded by departments in the mathematical sciences at universities in the United States during the period July 1, 2013, through June 30, 2014. The report includes a preliminary analysis of the fall 2014 employment plans of 2013–2014 doctoral recipients and a demographic profile summarizing characteristics of citizenship status and gender. The report on the 2013–2014 New Doctoral Recipients will include subsequent reports of additional 2013–2014 doctoral recipients from the departments that did not respond in time for this report, along with additional information provided by the doctoral recipients themselves. A list of the nonresponding departments is on page 273. This report uses the new groupings of doctoral-granting mathematics departments adopted by the Joint Data Committee starting with the 2012 AMS-ASA-IMS-MAA-SIAM Annual Survey of the Mathematical Sciences. Additional detail can be found on the AMS website at www.ams.org/annual-survey/groups.

Doctoral Degrees Awarded

The preliminary data shows that 1,728 new PhDs were awarded by 274 departments that responded in time for this report. These new PhDs consist of:

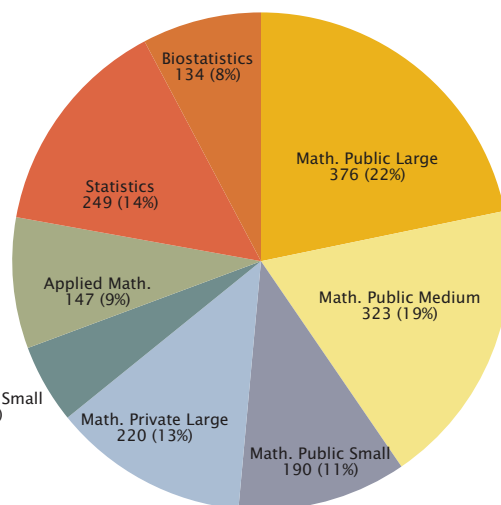
- 1,205 Males
- 523 Females
- 842 U.S. citizens
- 886 Non-U.S. citizens

Based on the data collected so far it is likely that the final count of PhDs awarded during 2013–2014 will exceed the record total of 1,843 reported for 2012–2013. The departments that have responded in both survey cycles reported 1,703 for 2013–2014 versus 1,658 for 2012–2013, a 2.7% increase.

Preliminary employment data on new PhDs shows that 9% are unemployed or not seeking employment and of those whose employment status is known (1,574):

- 78% are U.S. employed
- 13% are Non-U.S. employed
- 54% of those employed in the U.S. are U.S. citizens

Figure P.1: Number and Percentage of Degrees Awarded by Department Grouping*



Total Degrees Awarded: 1,728

*A description of the department groupings can be viewed at www.ams.org/annual-survey/groups.

William Yslas Vélez is a professor in the Department of Mathematics at University of Arizona. James W. Maxwell is AMS coordinator of special projects. Colleen A. Rose is AMS survey analyst.

Doctoral Degrees Awarded

The graphics below provide a snapshot of the preliminary data on new doctorates by gender, citizenship, employment status, employer type, and field of thesis. Watch for the release of the final report (Summer 2015) to see the full statistical profile along with comparative data on this cohort of new doctoral recipients.

Figure P.2: Gender of Doctoral Recipients by Department Grouping

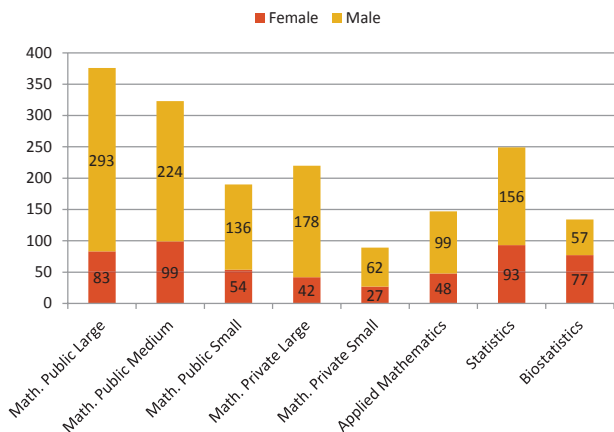


Figure P.3: Citizenship of Doctoral Recipients by Department Grouping

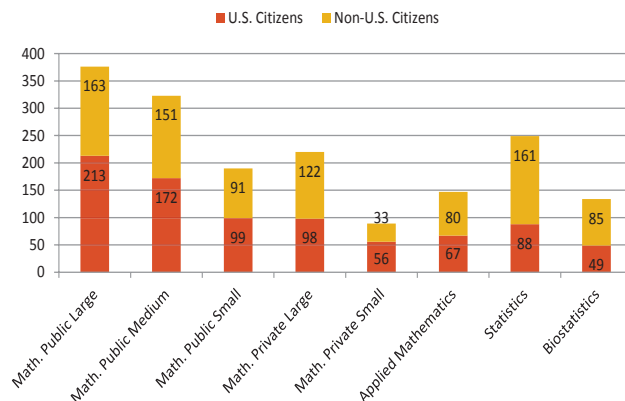
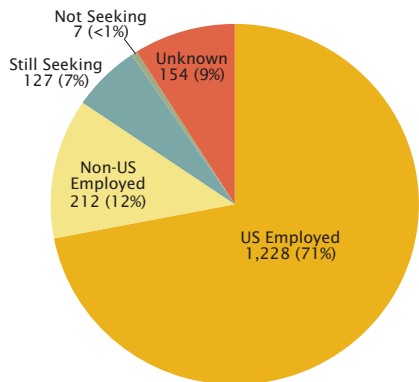
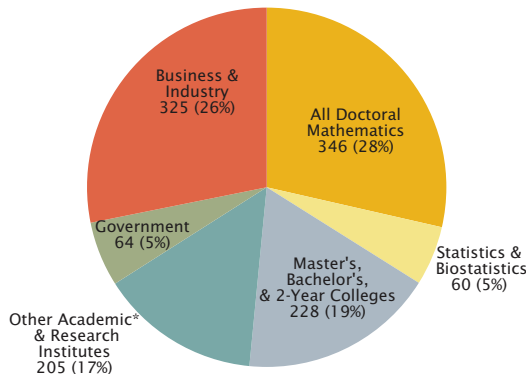


Figure P.4: Employment Status



Total Degrees Awarded: 1,728

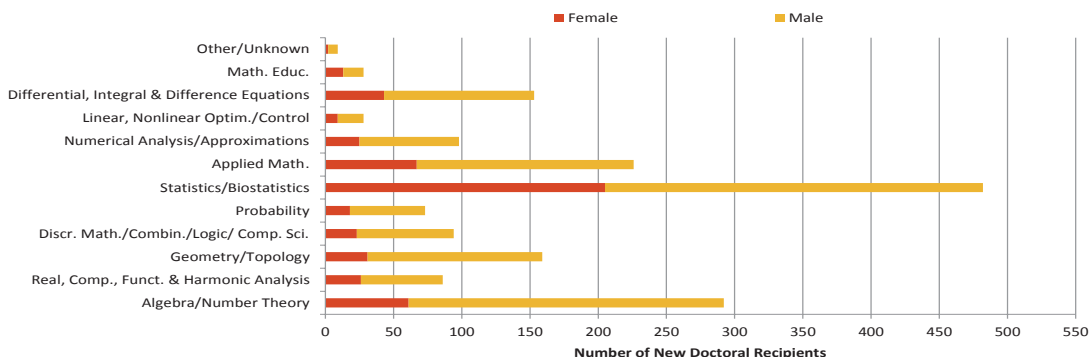
Figure P.5: U.S. Employed by Type of Employer



Total U.S. Employed: 1,228

*Other Academic consists of departments outside the mathematical sciences including numerous medical related units.

Figure P.6: New Doctoral Recipients by Field of Thesis and Gender



Departmental Response Rates

Survey Response Rates by New Groupings

Doctorates Granted Departmental Response Rates

Math. Public Large	25 of 26 including	0 with no degrees
Math. Public Medium	40 of 40 including	0 with no degrees
Math. Public Small	57 of 64 including	6 with no degrees
Math. Private Large	24 of 24 including	0 with no degrees
Math. Private Small	26 of 28 including	4 with no degrees
Applied Math.	27 of 31 including	2 with no degrees
Statistics	45 of 58 including	1 with no degrees
Biostatistics	30 of 44 including	6 with no degrees
Total	274 of 315 including	19 with no degrees

Doctoral Degrees Not Yet Reported

The following mathematical sciences, applied mathematics, statistics, and biostatistics departments had not responded in time for their data to be included in this report. Those departments listed with an "*" have yet to respond as of January 24, 2015. Every effort will be made to collect the responses from these departments for inclusion in the New Doctoral Recipients Report which will be published in the August 2015 issue of *Notices of the AMS*.

Departments yet to respond can obtain copies of the Doctorates Granted survey forms on the AMS website at www.ams.org/annual-survey/surveyforms, by sending email to ams-survey@ams.org, or by calling 1-800-321-4267, ext. 4189.

Math. Public Large

University of Illinois at Chicago

Math. Public Medium

All departments responded.

Math. Public Small

Delaware State University
University of Missouri-St Louis
University of Nevada, Las Vegas
University of North Carolina at Charlotte
University of Southern Mississippi
University of Toledo
Utah State University

Math. Private Large

All departments responded.

Math. Private Small

Syracuse University
University of Denver

Applied Mathematics

Columbia University
University of Colorado, Boulder
University of Colorado, Denver
University of Pennsylvania

Statistics

Iowa State University
North Carolina State University
North Dakota State University
Oklahoma State University
Pennsylvania State University
University of California, Berkeley
University of California, Los Angeles
University of California, Santa Barbara
University of Georgia
University of Illinois- Urbana-Champaign
University of Kentucky
University of Virginia
Virginia Polytechnic Institute and State University

Biostatistics

Cornell University
Columbia University
Cornell University
Medical College of Wisconsin
St Louis University College for Public Health & Social Justice
University of Albany, SUNY
University of California, Los Angeles
University of Cincinnati
University of Illinois at Chicago
University of Kentucky
University of Louisville
University of Oklahoma, Health Science Center
University of South Carolina
University of South Florida