

Faculty Salary Survey

The charts on the following pages display faculty salary data for Groups I (Pu), I (Pr), II, III, IV (Statistics), IV (Biostatistics), Va, M, and B: faculty salary distribution by rank, mean salaries by rank, information on quartiles by rank, and the number of returns for the group. Results reported here are summaries based on the departments who responded to this portion of the Annual Survey. This is the third year that salary information has been reported separately for statistics departments and biostatistics and biometrics departments in Group IV.

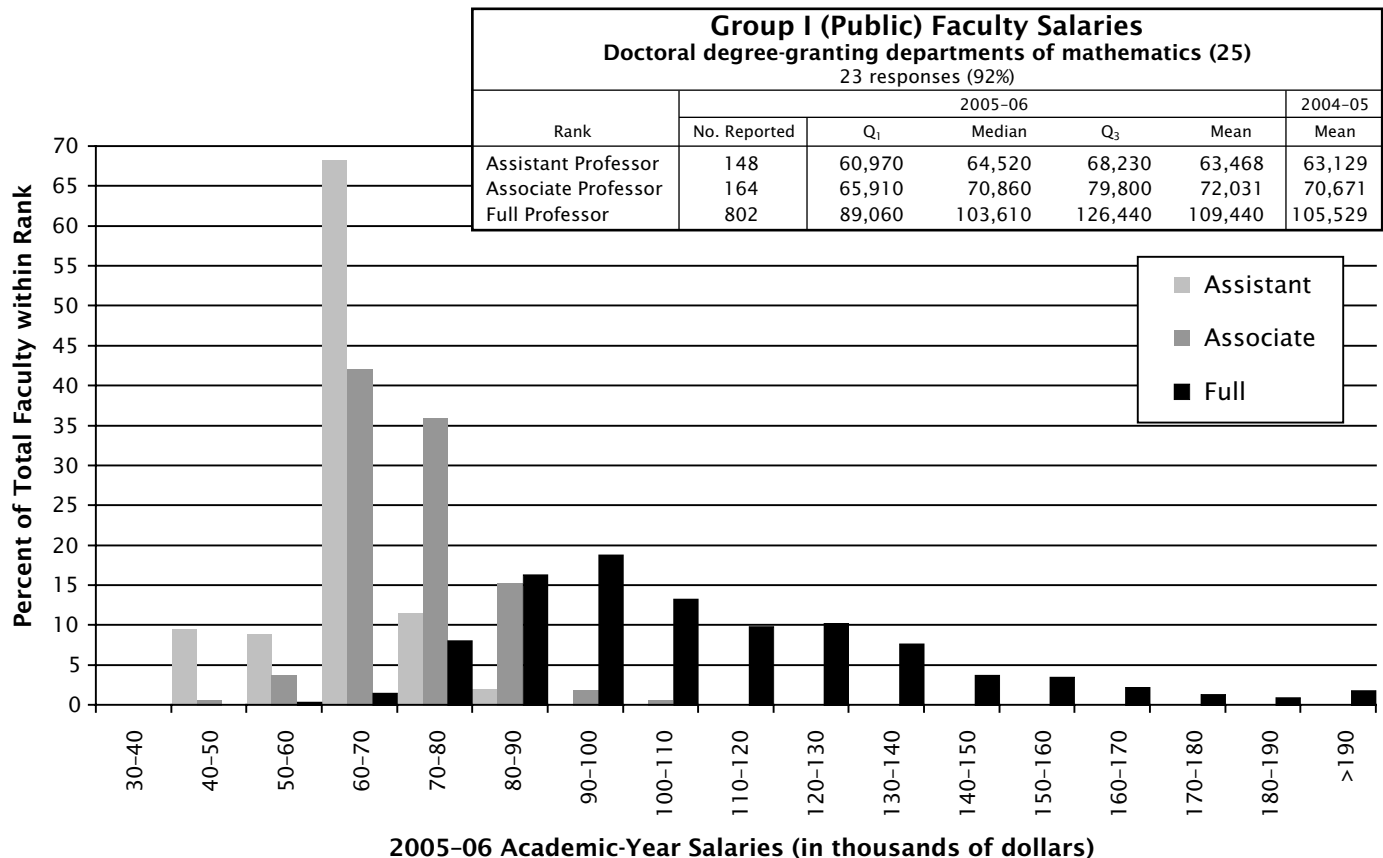
Table 11 provides the departmental response rates for the 2005 Faculty Salary Survey. Departments were asked to report for each rank the number of tenured and tenure-track faculty whose 2005-06 academic-year salaries fell within given salary intervals. Reporting salary data in this fashion eliminates some of the concerns about confidentiality but does not permit determination of actual quartiles. Although the actual quartiles cannot be determined from the data gathered, these quartiles have been estimated assuming that the density over each interval is uniform.

Since departments in Groups I, II, and III were changed in 1995-96 (see definitions of the groups on page 245), comparisons are possible only to the last eight years' data. In addition, prior to the 1998 survey Groups Va and Vb were reported together as Group V. When comparing current and prior year figures, one should keep in mind that differences in the set of responding departments may be a significant factor in the change in the reported mean salaries.

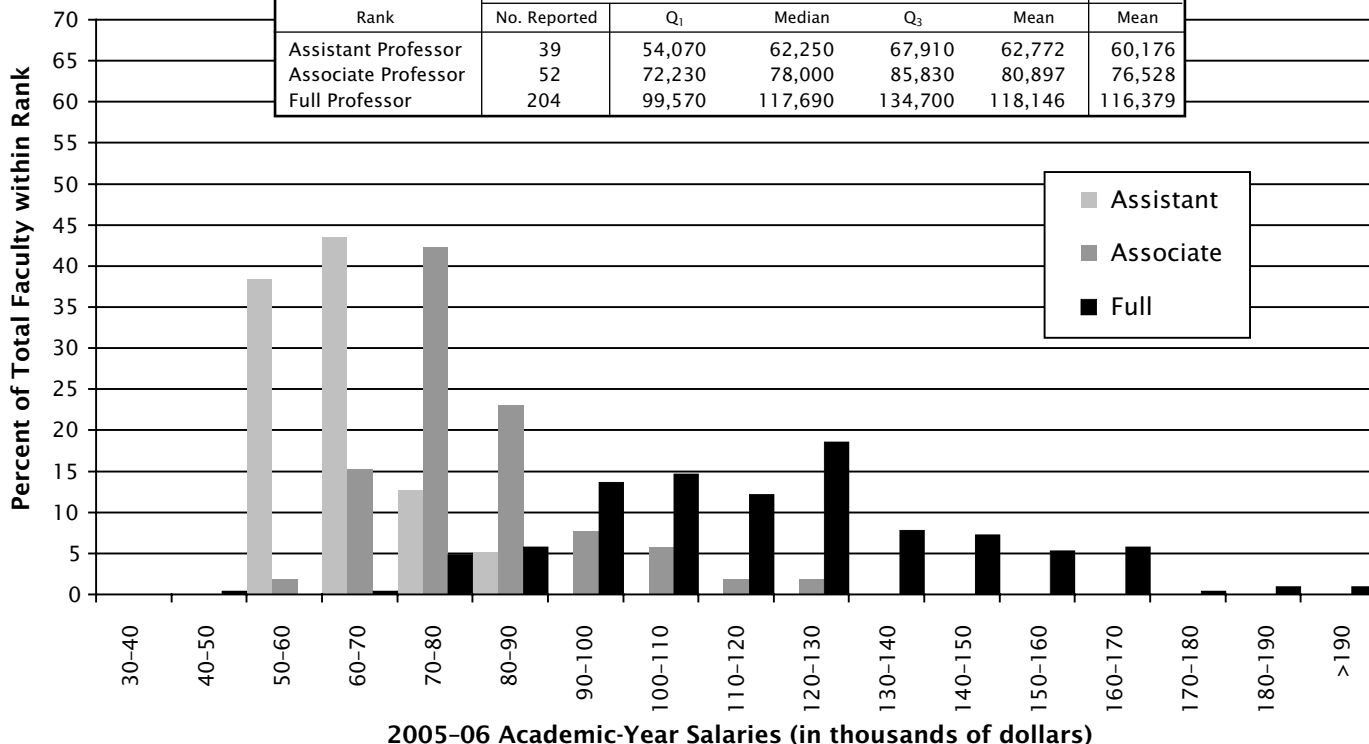
Table 11: Faculty Salary Response Rates

Department	Number	Percent
Group I (Public)	23 of 25	92
Group I (Private)	11 of 23	48
Group II	45 of 56	80
Group III	66 of 75	88
Group IV (Statistics)	42 of 55	76
Group IV (Biostatistics)	17 of 31	55
Group Va	11 of 21*	52
Group M	80 of 189	42
Group B	320 of 1010	32

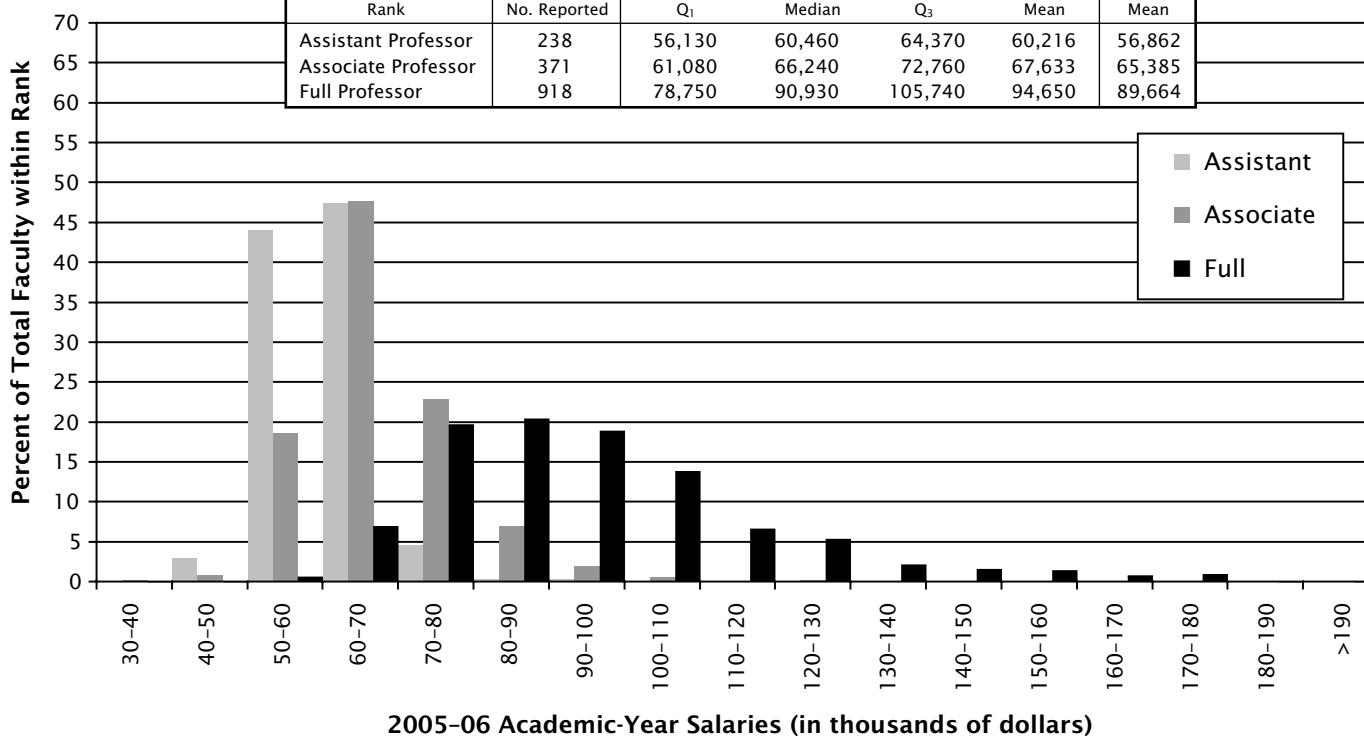
* The population for Group Va is slightly less than for the Doctorates Granted Survey, because some departments grant degrees but do not formally "house" faculty and their salaries.



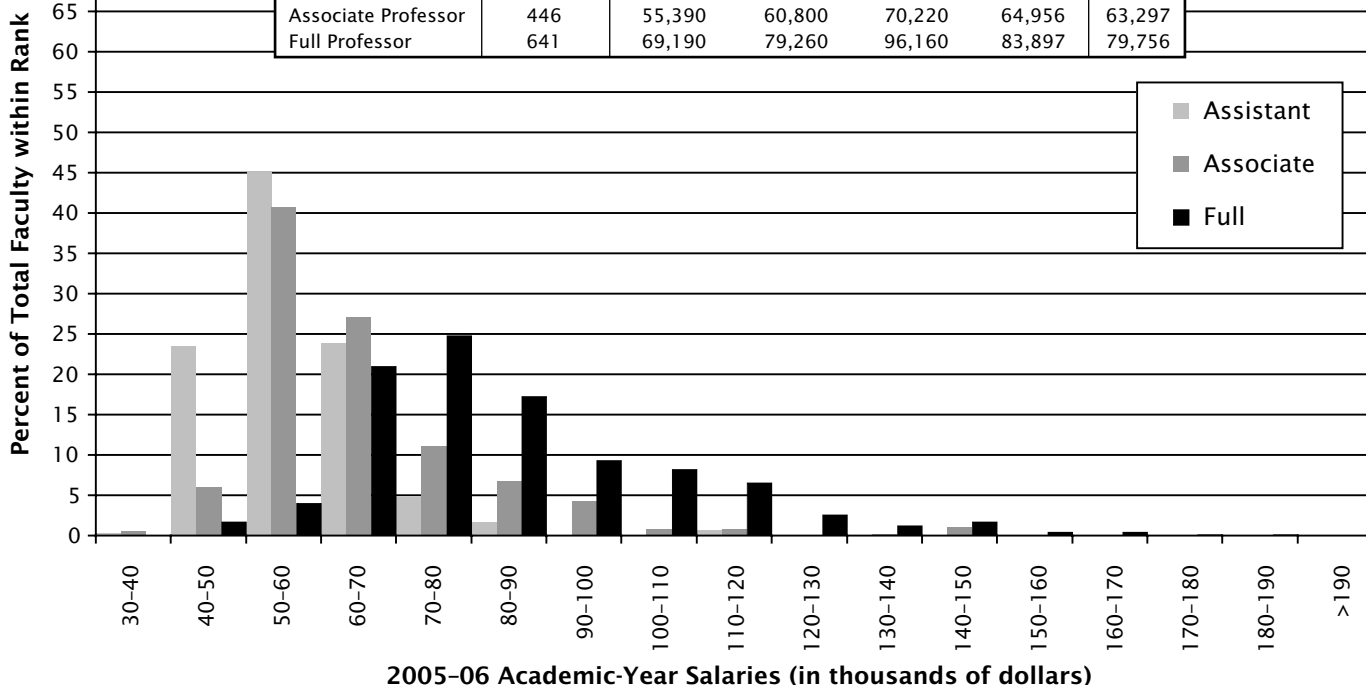
Group I (Private) Faculty Salaries						
Doctoral degree-granting departments of mathematics (23)						
11 responses (48%)						
Rank	2005-06					2004-05
	No. Reported	Q ₁	Median	Q ₃	Mean	Mean
Assistant Professor	39	54,070	62,250	67,910	62,772	60,176
Associate Professor	52	72,230	78,000	85,830	80,897	76,528
Full Professor	204	99,570	117,690	134,700	118,146	116,379



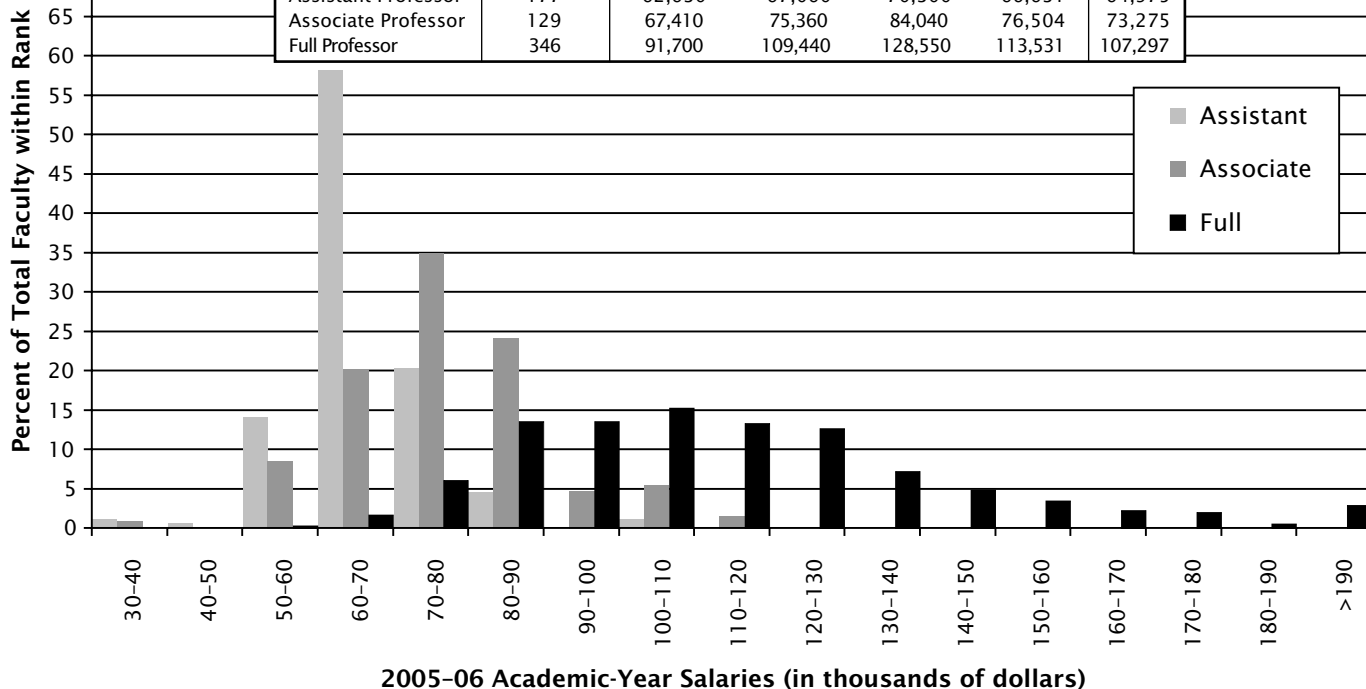
Group II Faculty Salaries						
Doctoral degree-granting departments of mathematics (56)						
45 responses (80%)						
Rank	2005-06					2004-05
	No. Reported	Q ₁	Median	Q ₃	Mean	Mean
Assistant Professor	238	56,130	60,460	64,370	60,216	56,862
Associate Professor	371	61,080	66,240	72,760	67,633	65,385
Full Professor	918	78,750	90,930	105,740	94,650	89,664



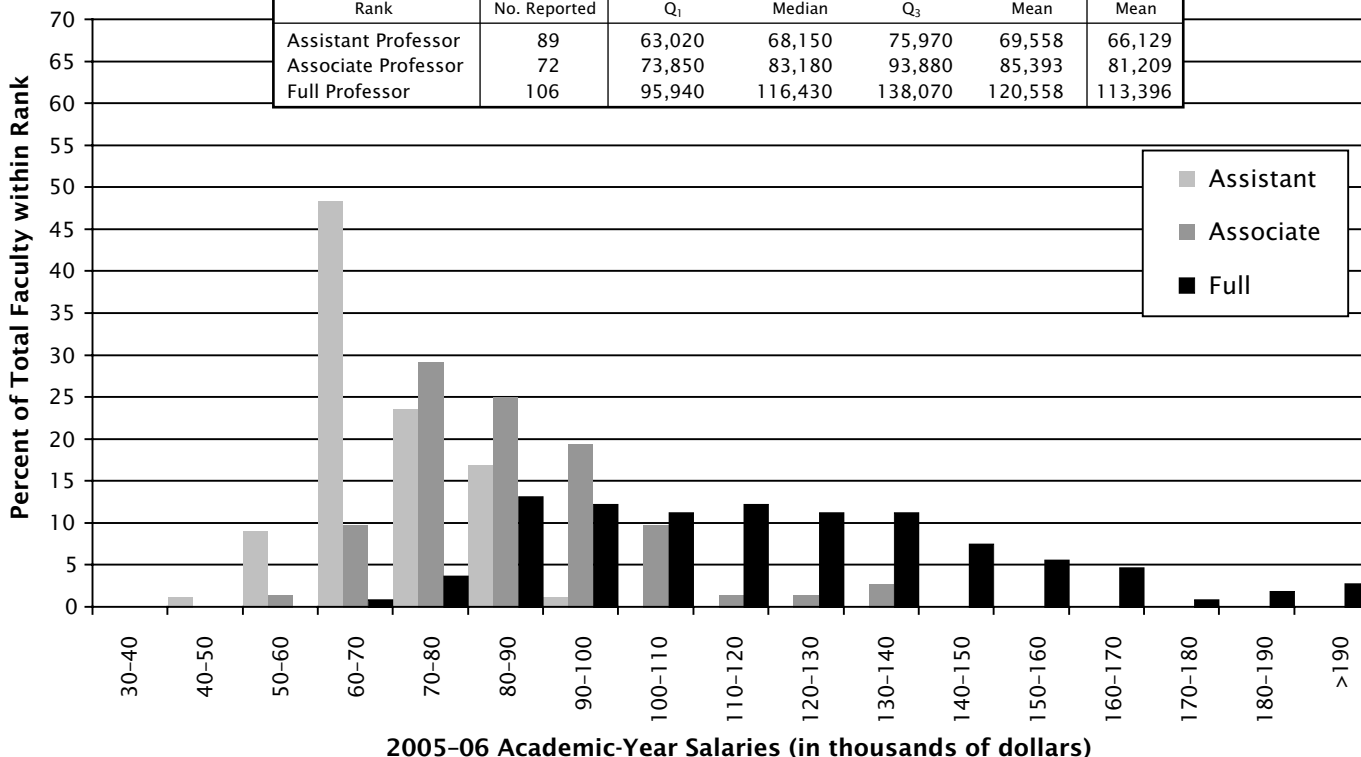
Group III Faculty Salaries						
Doctoral degree-granting departments of mathematics (75)						
66 responses (88%)						
Rank	2005-06					2004-05
	No. Reported	Q ₁	Median	Q ₃	Mean	Mean
Assistant Professor	293	50,260	55,960	61,740	56,790	54,349
Associate Professor	446	55,390	60,800	70,220	64,956	63,297
Full Professor	641	69,190	79,260	96,160	83,897	79,756



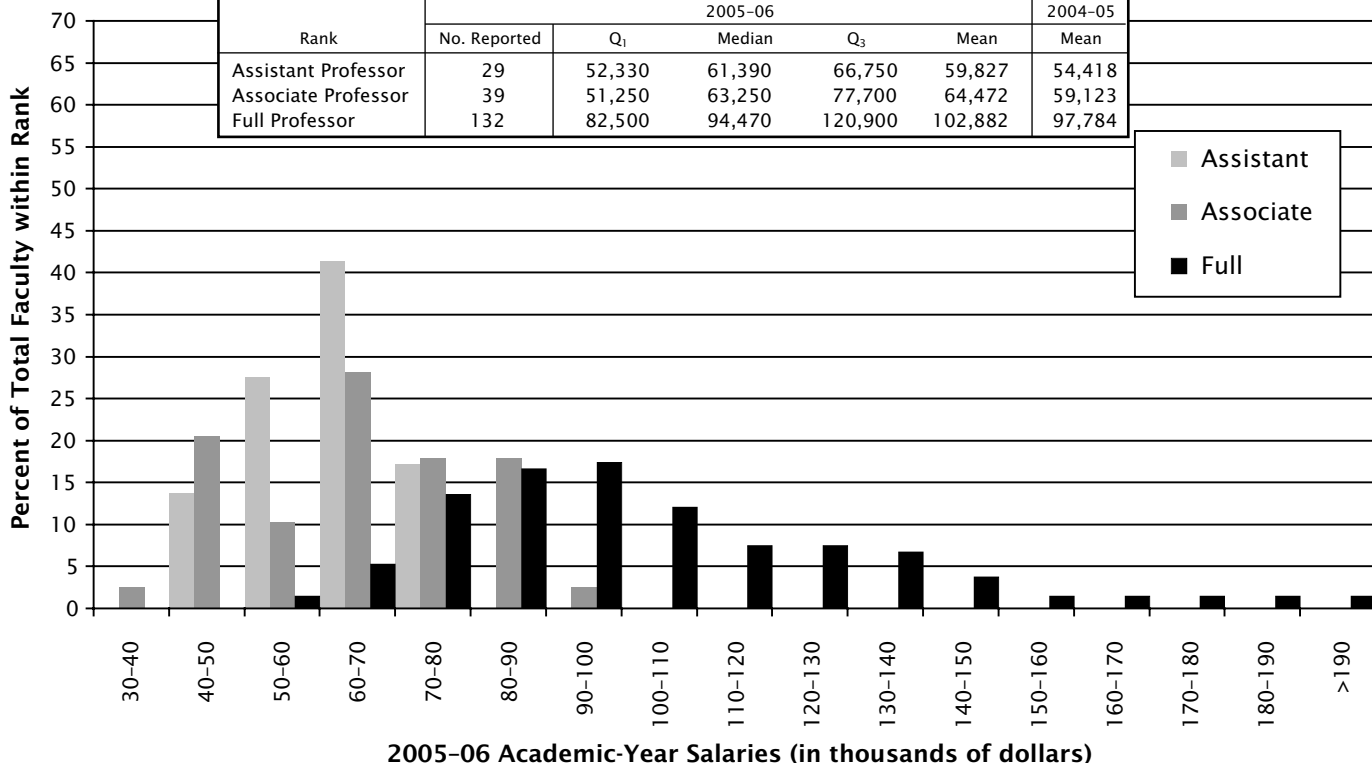
Group IV (Statistics) Faculty Salaries						
Doctoral degree-granting departments of statistics (55)						
42 responses (76%)						
Rank	2005-06					2004-05
	No. Reported	Q ₁	Median	Q ₃	Mean	Mean
Assistant Professor	177	62,630	67,060	70,300	66,631	64,975
Associate Professor	129	67,410	75,360	84,040	76,504	73,275
Full Professor	346	91,700	109,440	128,550	113,531	107,297



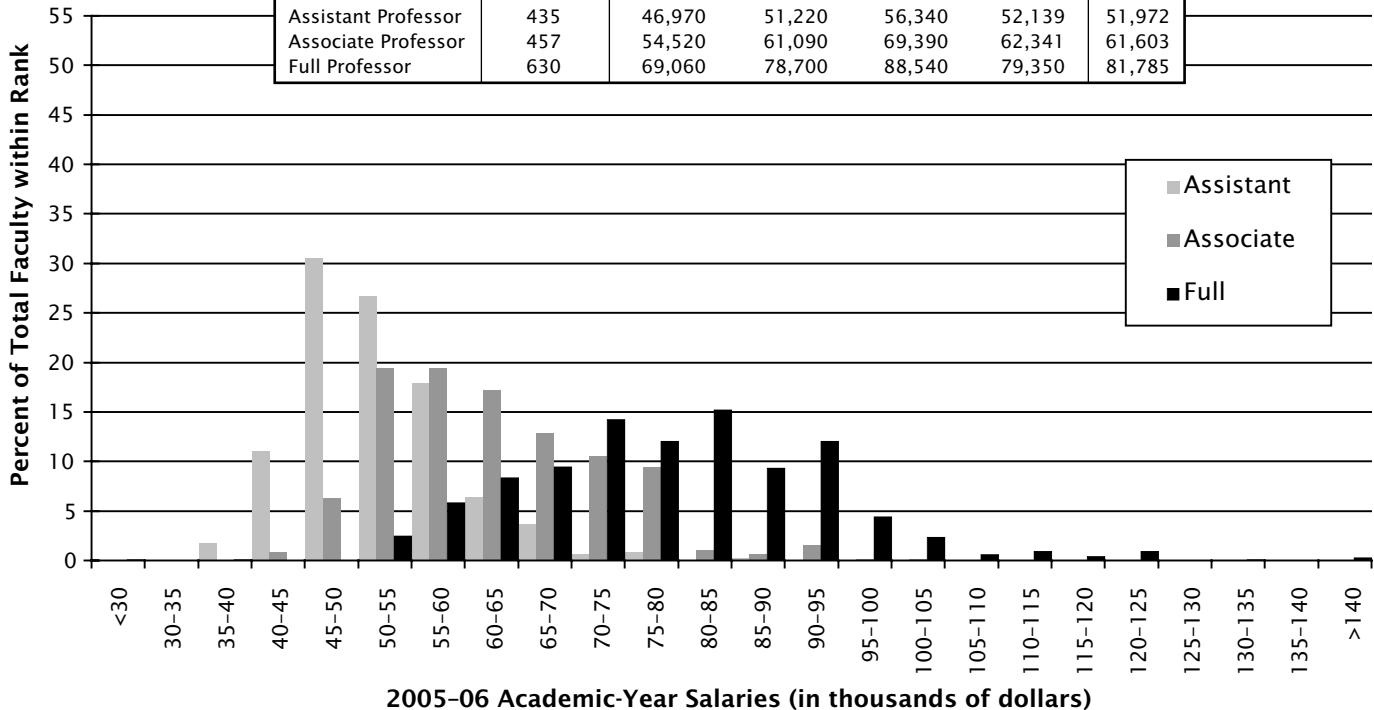
Group IV (Biostatistics) Faculty Salaries						
Doctoral degree-granting departments of biostatistics and biometrics (31)						
17 responses (55%)						
Rank	2005-06					2004-05
	No. Reported	Q ₁	Median	Q ₃	Mean	Mean
Assistant Professor	89	63,020	68,150	75,970	69,558	66,129
Associate Professor	72	73,850	83,180	93,880	85,393	81,209
Full Professor	106	95,940	116,430	138,070	120,558	113,396



Group Va Faculty Salaries						
Doctoral degree-granting departments of applied mathematics (18)						
11 responses (61%)						
Rank	2005-06					2004-05
	No. Reported	Q ₁	Median	Q ₃	Mean	Mean
Assistant Professor	29	52,330	61,390	66,750	59,827	54,418
Associate Professor	39	51,250	63,250	77,700	64,472	59,123
Full Professor	132	82,500	94,470	120,900	102,882	97,784



Group M Faculty Salaries						
Master's degree-granting departments of mathematics (189)						
80 responses (47%)						
Rank	2005-06					2004-05
	No. Reported	Q ₁	Median	Q ₃	Mean	Mean
Assistant Professor	435	46,970	51,220	56,340	52,139	51,972
Associate Professor	457	54,520	61,090	69,390	62,341	61,603
Full Professor	630	69,060	78,700	88,540	79,350	81,785



Group B Faculty Salaries						
Bachelor's degree-granting departments of mathematics (1010)						
320 responses (32%)						
Rank	2005-06					2004-05
	No. Reported	Q ₁	Median	Q ₃	Mean	Mean
Assistant Professor	916	42,930	47,830	53,500	48,808	48,511
Associate Professor	852	50,360	56,370	64,850	58,293	57,542
Full Professor	948	62,610	73,160	86,020	76,289	73,745

