

# 2009 Annual Survey of the Mathematical Sciences

(First Report, Part II)

## 2009–2010 Faculty Salaries Report

*Polly Phipps, James W. Maxwell, and Colleen A. Rose*

This report provides information on the distribution of 2009–2010 academic-year salaries for tenured and tenure-track faculty at four-year mathematical sciences departments in the U.S. by the departmental groupings used in the Annual Survey. (See page 414 for the definitions of the various departmental groupings.) Salaries are described separately by rank. Salaries are reported in current dollars (at time of data collection). Results reported here are based on the departments which responded to the survey with no adjustment for non-response.

Table 1 provides the departmental response rates for the 2009 Faculty Salary Survey. Departments were asked to report for each rank the number of tenured and tenure-track faculty whose 2009–10 academic-year salaries fell within given salary intervals (the survey form is available at [www.ams.org/employment/surveyforms.html](http://www.ams.org/employment/surveyforms.html)). Reporting salary data in this fashion eliminates some of the concerns about confidentiality but does not permit determination of actual quartiles. Although the actual quartiles cannot be determined from the data gathered, these quartiles have been estimated assuming that the density over each interval is uniform.

When comparing current and prior year figures, one should keep in mind that differences in the set of responding departments may be a significant factor in the change in the reported mean salaries.

### Previous Annual Survey Reports

The 2008 First, Second, and Third Annual Survey Reports were published in the *Notices of the AMS* in the February, August, and November 2009 issues respectively. These reports and earlier reports, as well as a wealth of other information from these surveys, are available on the AMS website at [www.ams.org/employment/surveyreports.html](http://www.ams.org/employment/surveyreports.html).

### Acknowledgements

The Annual Survey attempts to provide an accurate appraisal and analysis of various aspects of the academic mathematical

---

*Polly Phipps is a senior research statistician with the Bureau of Labor Statistics. James W. Maxwell is AMS associate executive director for special projects. Colleen A. Rose is AMS survey analyst.*

**Table 1: Faculty Salary Response Rates**

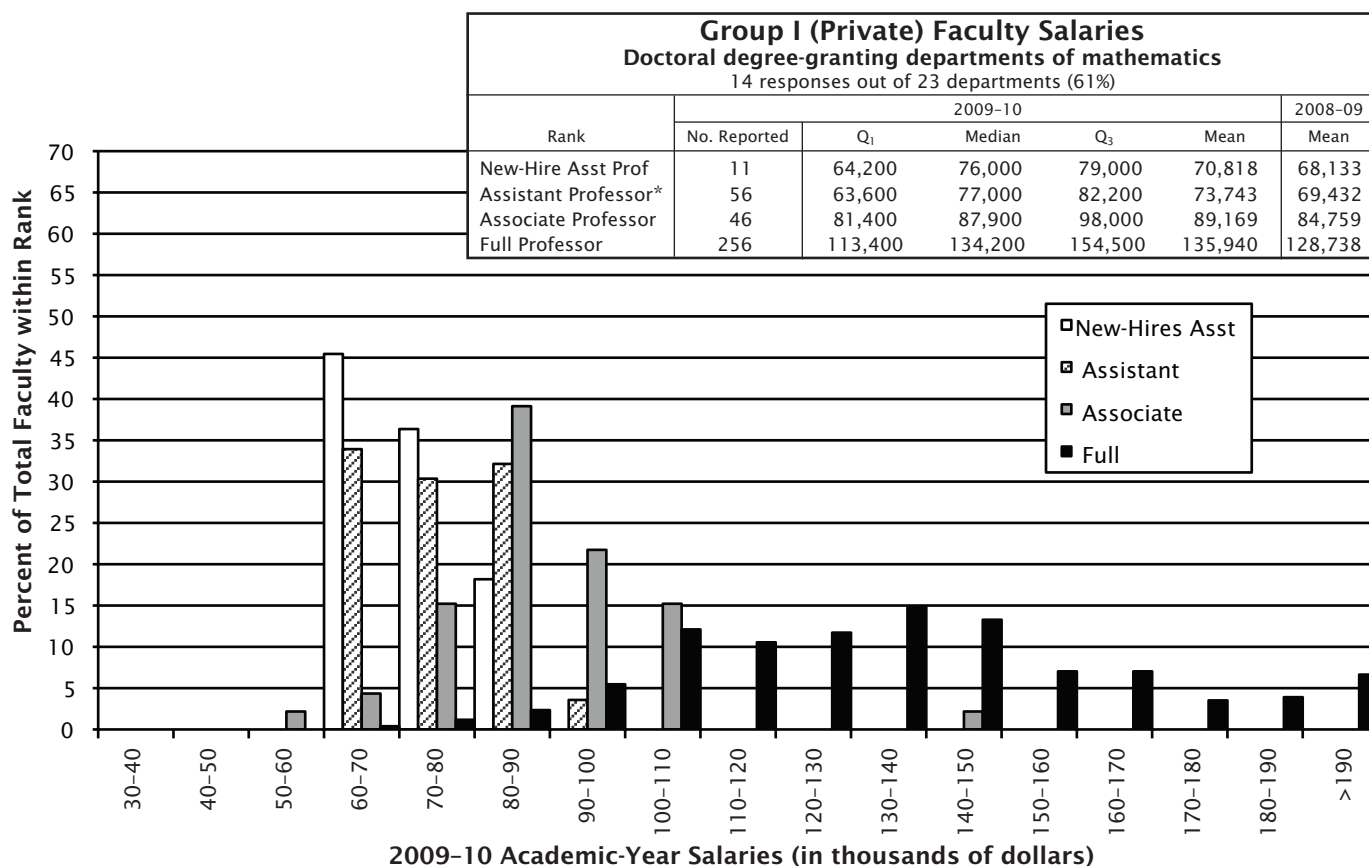
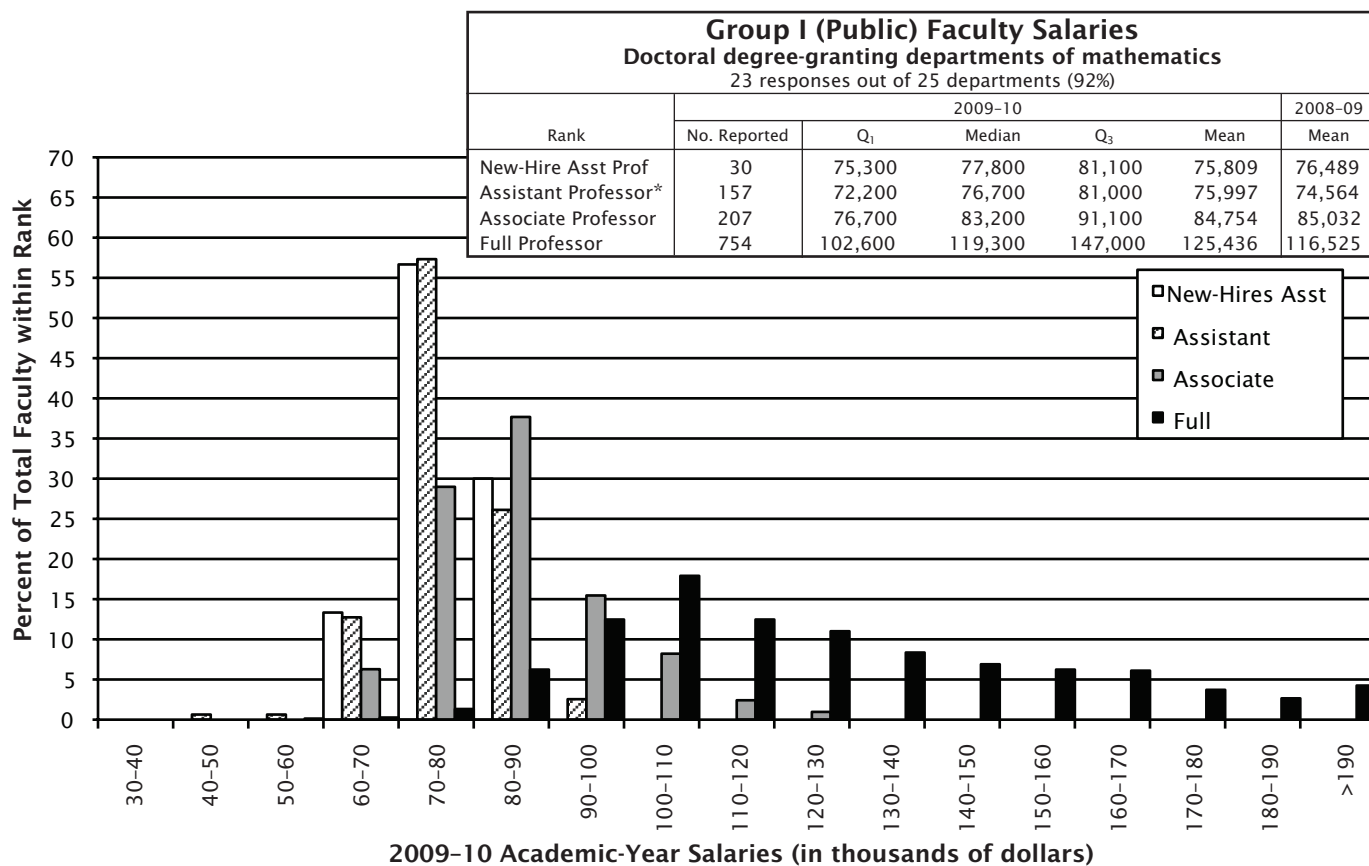
Department	Number	Percent
Group I (Public)	23 of 25	92
Group I (Private)	14 of 23	61
Group II	50 of 56	89
Group III	65 of 81	80
Group IV (Statistics)	41 of 57	72
Group IV (Biostatistics)	21 of 31	60
Group Va	10 of 18*	56
Group M	97 of 182	53
Group B	310 of 1037	30

\* The population for Group Va is slightly less than for the Doctorates Granted Survey because four programs do not formally "house" faculty and their salaries.

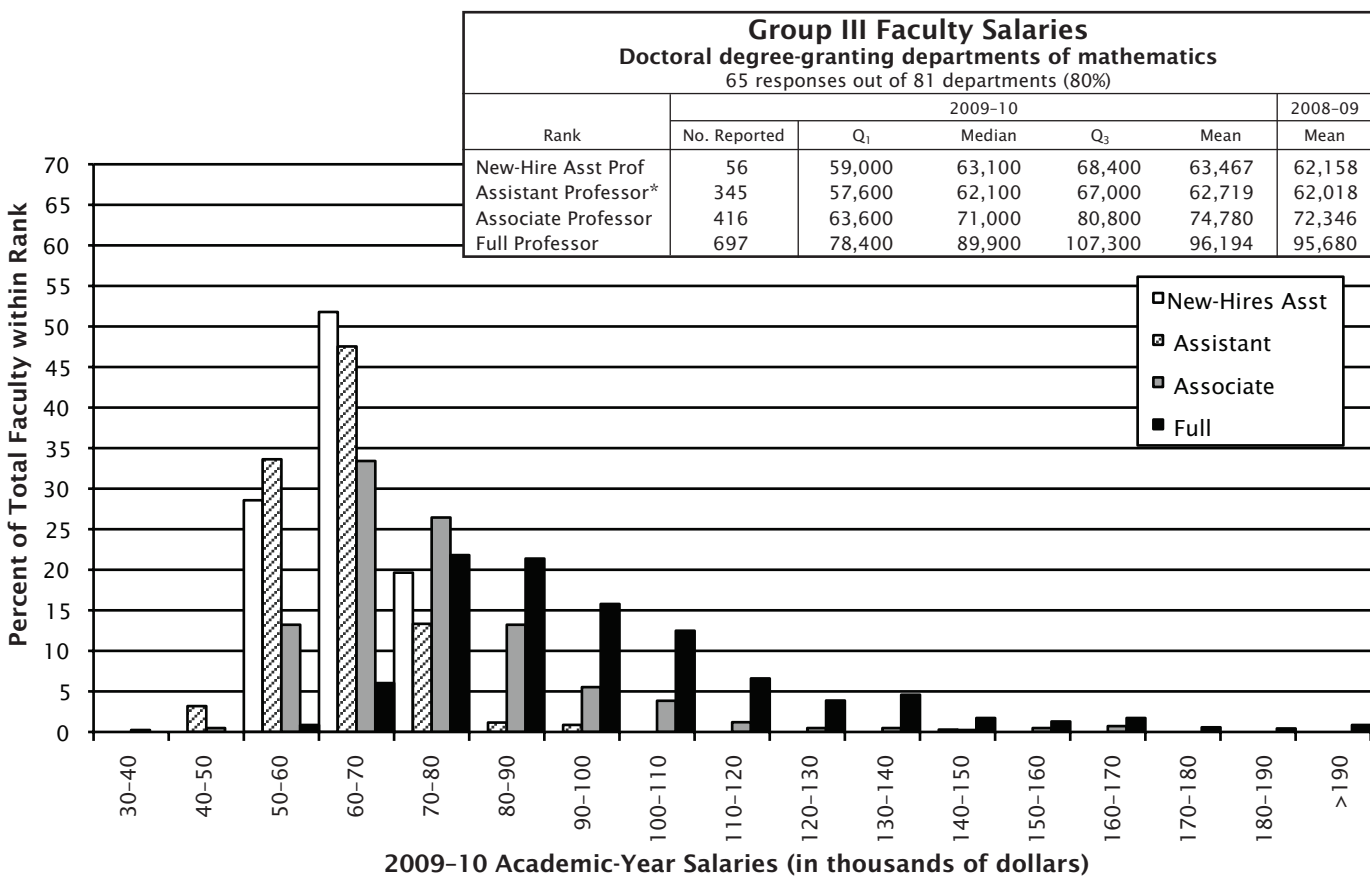
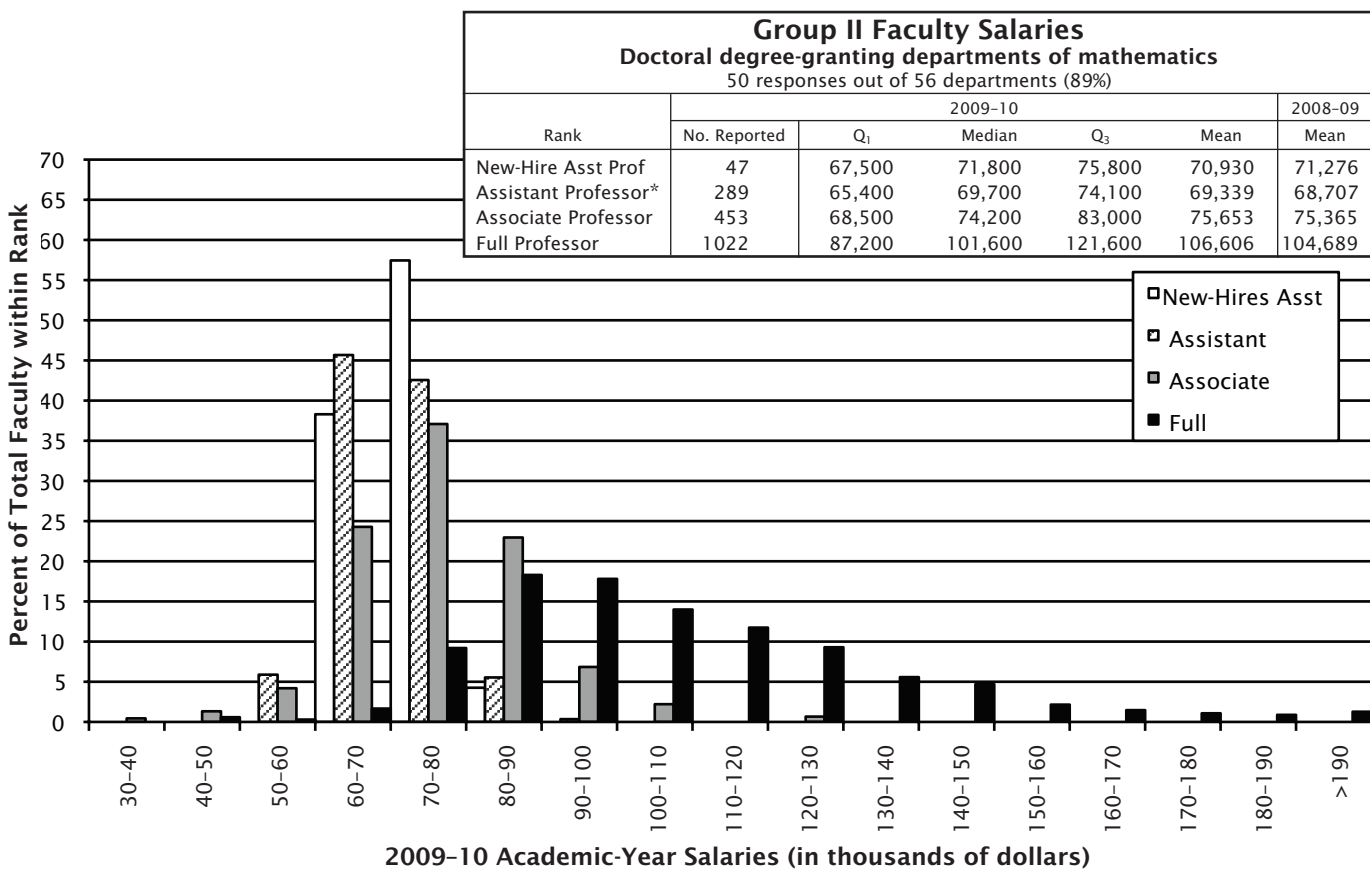
sciences scene for the use and benefit of the community and for filling the information needs of the professional organizations. Every year, college and university departments in the United States are invited to respond. The Annual Survey relies heavily on the conscientious efforts of the dedicated staff members of these departments for the quality of its information. On behalf of the Annual Survey Data Committee and the Annual Survey Staff, we thank the many secretarial and administrative staff members in the mathematical sciences departments for their cooperation and assistance in responding to the survey questionnaires.

### Other Sources of Data

Visit the AMS website at [www.ams.org/employment/specialreports.html](http://www.ams.org/employment/specialreports.html) for a listing of additional sources of data on the Mathematical Sciences.



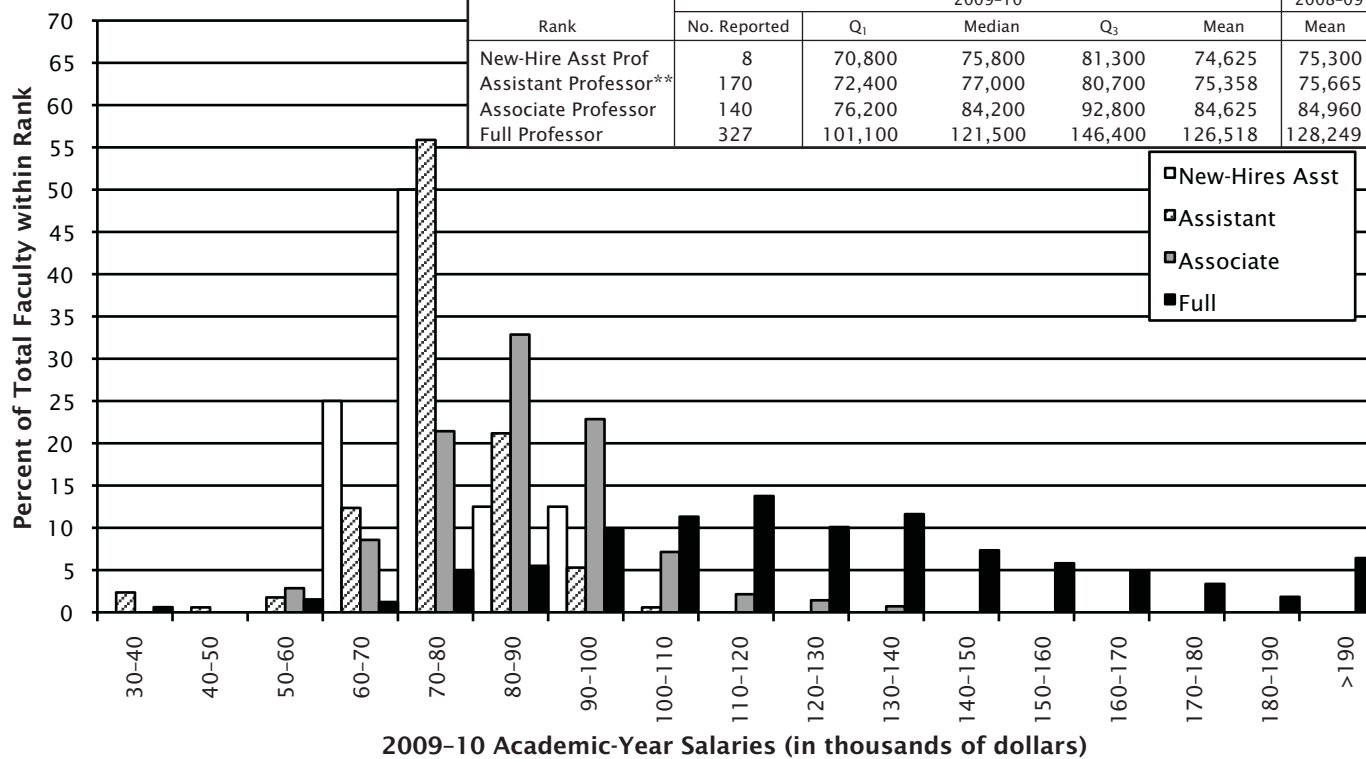
\*Includes new hires.



\*Includes new hires.

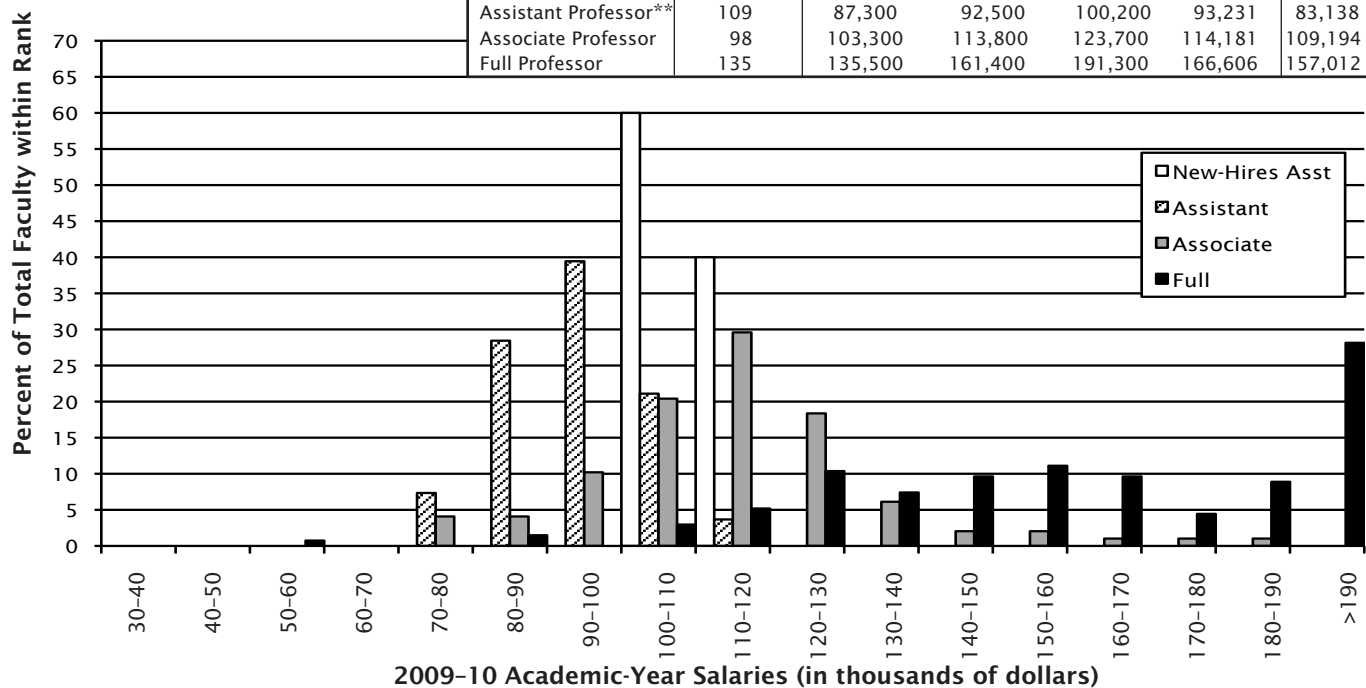
**Group IV Statistics Faculty Salaries\***  
**Doctoral degree-granting departments of statistics**  
 41 responses out of 57 departments (72%)

Rank	2009-10					2008-09
	No. Reported	Q <sub>1</sub>	Median	Q <sub>3</sub>	Mean	Mean
New-Hire Asst Prof	8	70,800	75,800	81,300	74,625	75,300
Assistant Professor**	170	72,400	77,000	80,700	75,358	75,665
Associate Professor	140	76,200	84,200	92,800	84,625	84,960
Full Professor	327	101,100	121,500	146,400	126,518	128,249



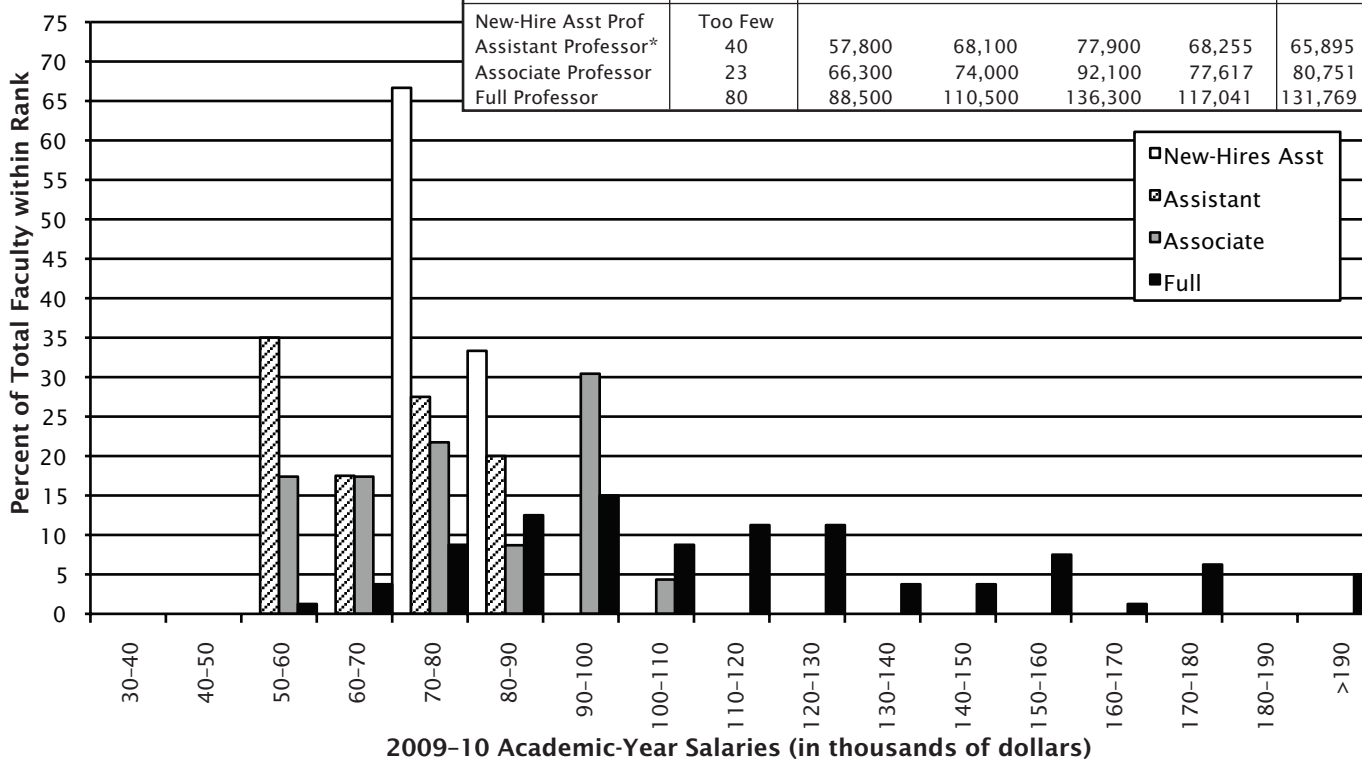
**Group IV Biostatistics Faculty Salaries\***  
**Doctoral degree-granting departments of biostatistics**  
 21 responses out of 35 departments (60%)

Rank	2009-10					2008-09
	No. Reported	Q <sub>1</sub>	Median	Q <sub>3</sub>	Mean	Mean
New-Hire Asst Prof	10	104,400	107,900	114,000	109,209	77,813
Assistant Professor**	109	87,300	92,500	100,200	93,231	83,138
Associate Professor	98	103,300	113,800	123,700	114,181	109,194
Full Professor	135	135,500	161,400	191,300	166,606	157,012



\*Faculty salary data provided by the American Statistical Association.  
 \*\*Includes new hires.

Group Va Faculty Salaries						
Doctoral degree-granting departments of applied mathematics						
10 responses out of 18 departments (56%)						
Rank	2009-10					2008-09
	No. Reported	Q <sub>1</sub>	Median	Q <sub>3</sub>	Mean	Mean
New-Hire Asst Prof	Too Few					
Assistant Professor*	40	57,800	68,100	77,900	68,255	65,895
Associate Professor	23	66,300	74,000	92,100	77,617	80,751
Full Professor	80	88,500	110,500	136,300	117,041	131,769



\*Includes new hires.

### Definitions of the Groups

Brief descriptions of the groupings are as follows:

Group I is composed of 48 departments with scores in the 3.00–5.00 range. Group I Public and Group I Private are Group I departments at public institutions and private institutions respectively.

Group II is composed of 56 departments with scores in the 2.00–2.99 range.

Group III contains the remaining U.S. departments reporting a doctoral program, including a number of departments not included in the 1995 ranking of program faculty.

Group IV contains U.S. departments (or programs) of statistics, biostatistics, and biometrics reporting a doctoral program.

Group Va is applied mathematics/applied science; Group Vb, which was no longer surveyed as of 1998–99, was operations research and management science.

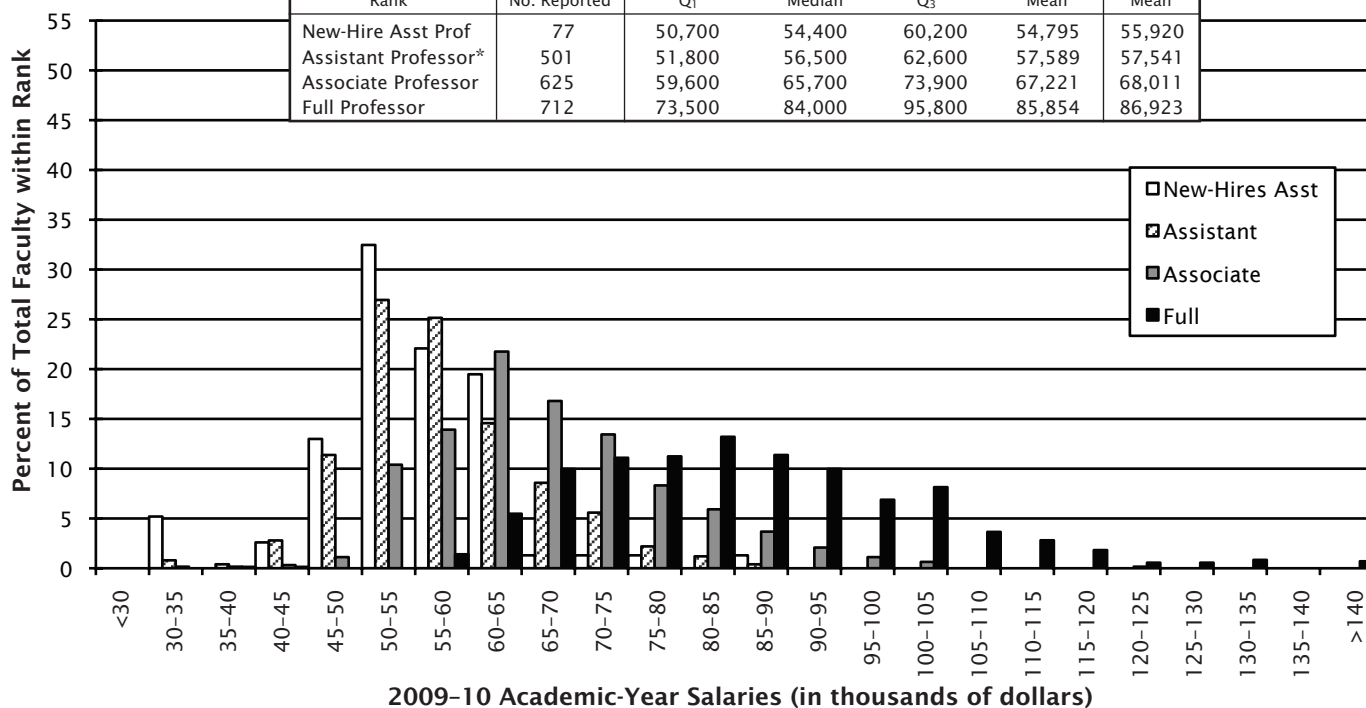
Group M contains U.S. departments granting a master’s degree as the highest graduate degree.

Group B contains U.S. departments granting a baccalaureate degree only.

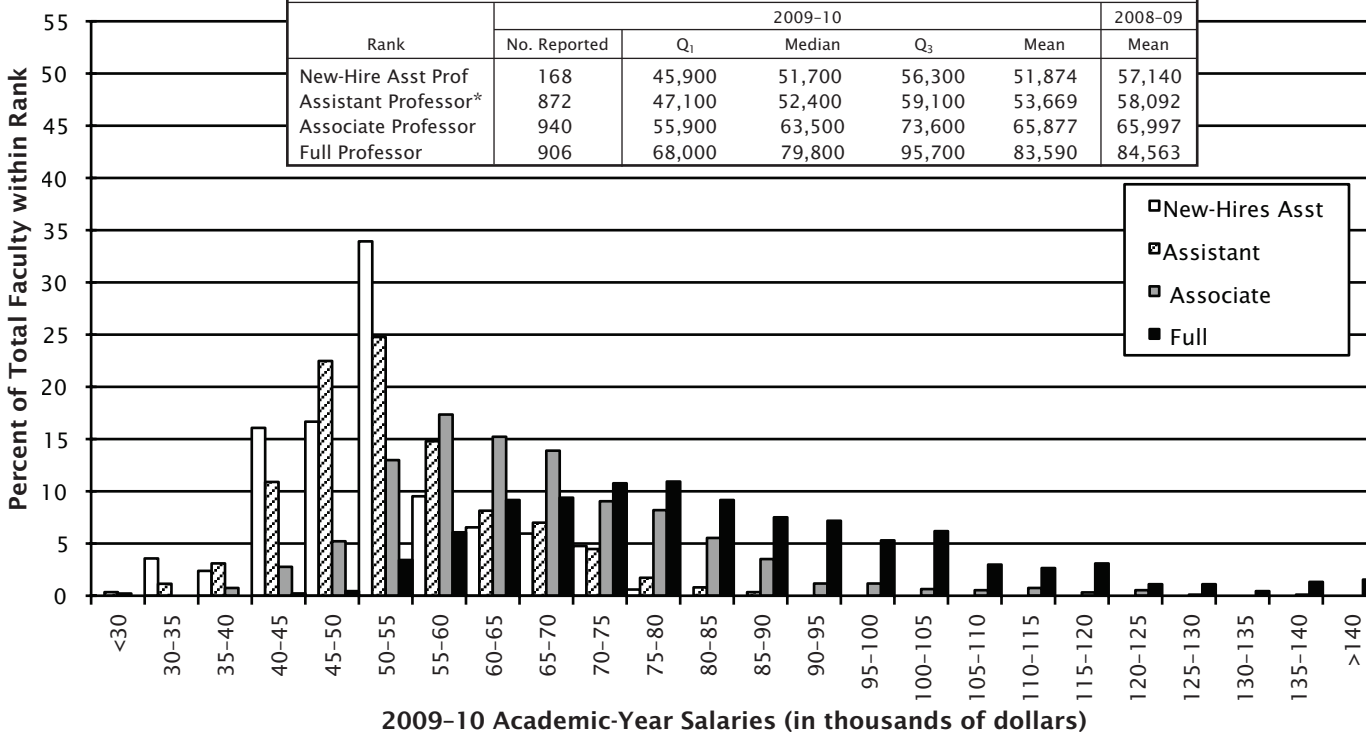
*Additional information on these groupings along with listings of the actual departments which compose each group is available on the AMS website at [www.ams.org/employment/groups\\_des.html](http://www.ams.org/employment/groups_des.html).*

The Annual Survey series begun in 1957 by the American Mathematical Society is currently under the direction of the Data Committee, a joint committee of the American Mathematical Society, the American Statistical Association, the Institute of Mathematical Statistics, the Mathematical Association of America, and the Society of Industrial and Applied Mathematics. The current members of this committee are Richard Cleary, Richard M. Dudley, Susan Geller, John W. Hagood, Abbe H. Herzig, Ellen Kirkman, Joanna Mitro, James W. Maxwell (ex officio), Bart Ng, Polly Phipps (chair), Douglas Ravel, Jianguo (Tony) Sun, and Marie Vitulli. The committee is assisted by AMS survey analyst Colleen A. Rose. Comments or suggestions regarding this Survey Report may be directed to the committee.

Group M Faculty Salaries						
Master's degree-granting departments of mathematics						
97 responses out of 182 departments (53%)						
Rank	2009-10					2008-09
	No. Reported	Q <sub>1</sub>	Median	Q <sub>3</sub>	Mean	Mean
New-Hire Asst Prof	77	50,700	54,400	60,200	54,795	55,920
Assistant Professor*	501	51,800	56,500	62,600	57,589	57,541
Associate Professor	625	59,600	65,700	73,900	67,221	68,011
Full Professor	712	73,500	84,000	95,800	85,854	86,923



Group B Faculty Salaries						
Bachelor's degree-granting departments of mathematics						
310 responses out of 1037 departments (30%)						
Rank	2009-10					2008-09
	No. Reported	Q <sub>1</sub>	Median	Q <sub>3</sub>	Mean	Mean
New-Hire Asst Prof	168	45,900	51,700	56,300	51,874	57,140
Assistant Professor*	872	47,100	52,400	59,100	53,669	58,092
Associate Professor	940	55,900	63,500	73,600	65,877	65,997
Full Professor	906	68,000	79,800	95,700	83,590	84,563



\*Includes new hires.