

Starting Salary Survey of the 2008–2009 Doctoral Recipients

The starting salary figures for 2009 were compiled from information gathered on the EENDR questionnaires sent to individuals who received doctoral degrees in the mathematical sciences during the 2008–2009 academic year from universities in the United States (see previous section for more details).

The questionnaires were distributed to 1,430 recipients of degrees using addresses provided by the departments granting the degrees; 755 individuals responded between late October and April. Responses with insufficient data or from individuals who indicated they had part-time or non-U.S. employment were excluded. Numbers of usable responses for each salary category are reported in the following tables.

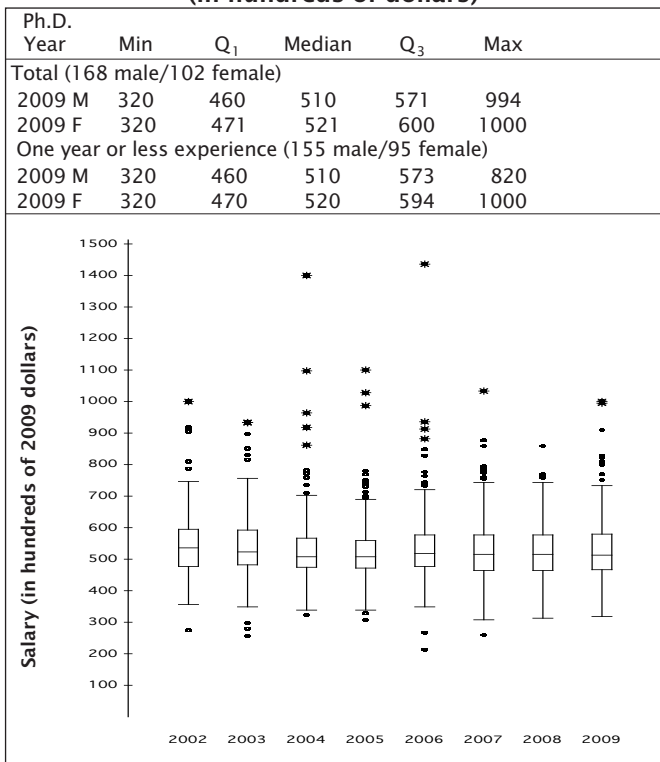
Readers should be warned that the data in this report are obtained from a self-selected

sample, and inferences from them may not be representative of the population.

Previous Annual Survey Reports

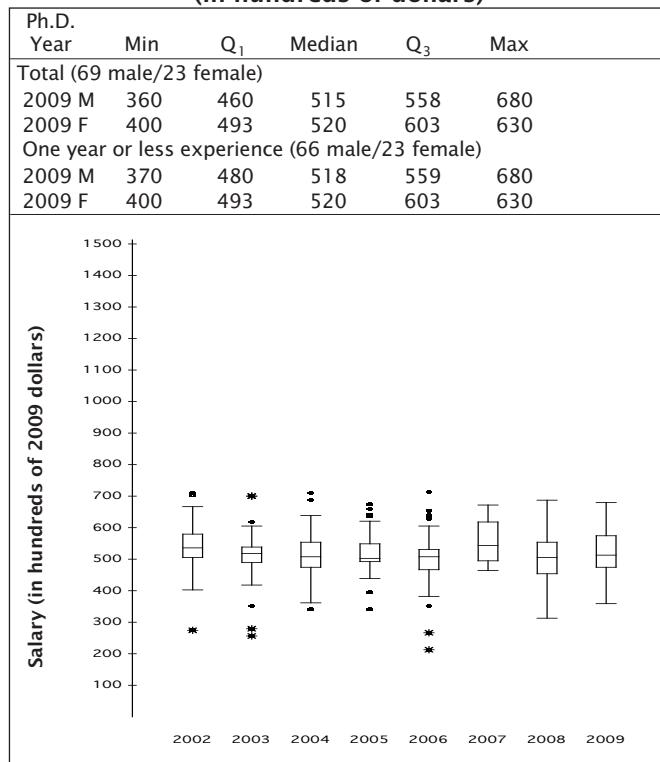
The 2009 Preliminary Report on New Doctoral Recipients (First Report, Part I) was published in the *Notices of the AMS*, February 2010 issue. The last full year of reports: the Faculty Salaries Report (First Report, Part II), the Report on New Doctoral Recipients and Starting Salaries (Second Report), and the Departmental Profile Report (Third Report) were published in the *Notices of the AMS* in the February, August, and November 2009 issues respectively. These reports and earlier reports, as well as a wealth of other information from these surveys, are available on the AMS website at www.ams.org/employment/surveyreports.html.

**Academic Teaching/Teaching and Research
9–10-Month Starting Salaries***
(in hundreds of dollars)



* Includes postdoctoral salaries.

Academic Postdoctorates Only*
9–10-Month Starting Salaries
(in hundreds of dollars)

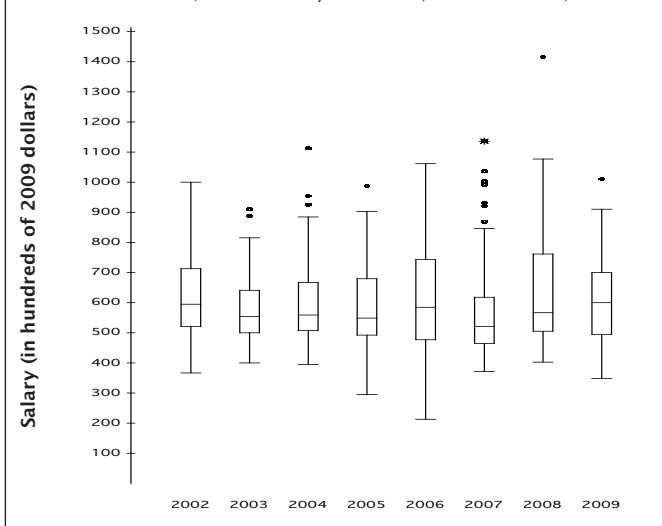


* A postdoctoral appointment is a temporary position primarily intended to provide an opportunity to extend graduate training or to further research experience.

**Academic Teaching/Teaching and Research
11-12-Month Starting Salaries***
(in hundreds of dollars)

Ph.D. Year	Min	Q ₁	Median	Q ₃	Max
Total (44 male/24 female)					
2009 M	350	499	565	616	1772
2009 F	360	529	600	785	911
One year or less experience (42 male/23 female)					
2009 M	350	500	565	614	1772
2009 F	360	508	600	790	911

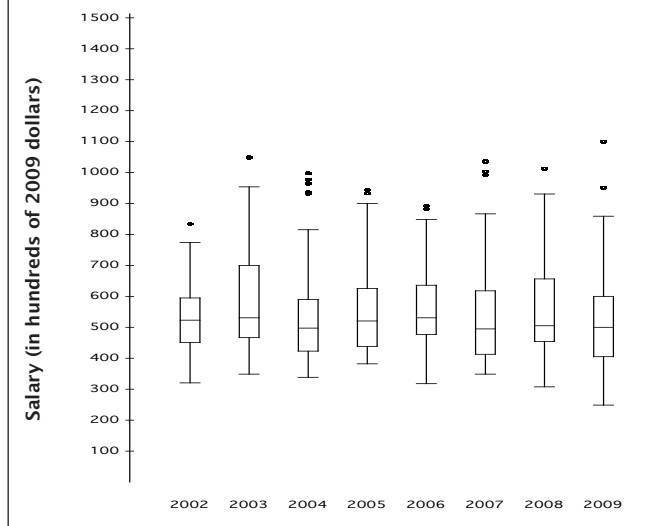
(Note: One salary above \$150,000 is not shown.)



* Includes postdoctoral salaries.

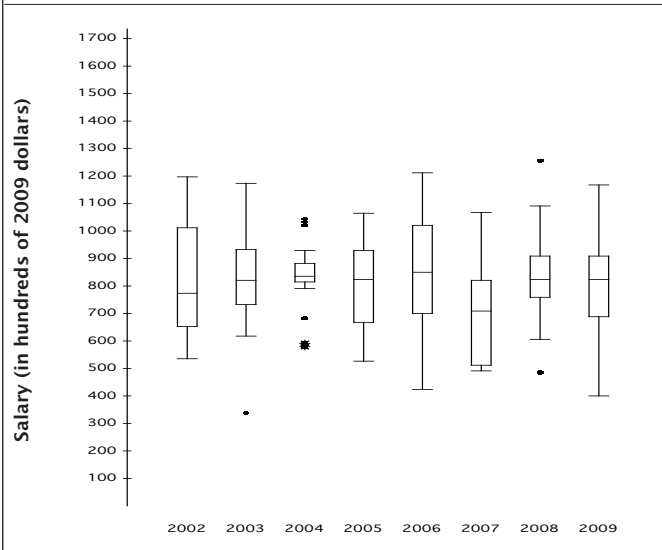
**Academic Research Only
11-12-Month Starting Salaries**
(in hundreds of dollars)

Ph.D. Year	Min	Q ₁	Median	Q ₃	Max
Total (52 male/22 female)					
2009 M	250	420	500	600	1100
2009 F	360	400	490	550	860
One year or less experience (46 male/19 female)					
2009 M	250	420	495	600	1100
2009 F	360	397	480	550	860



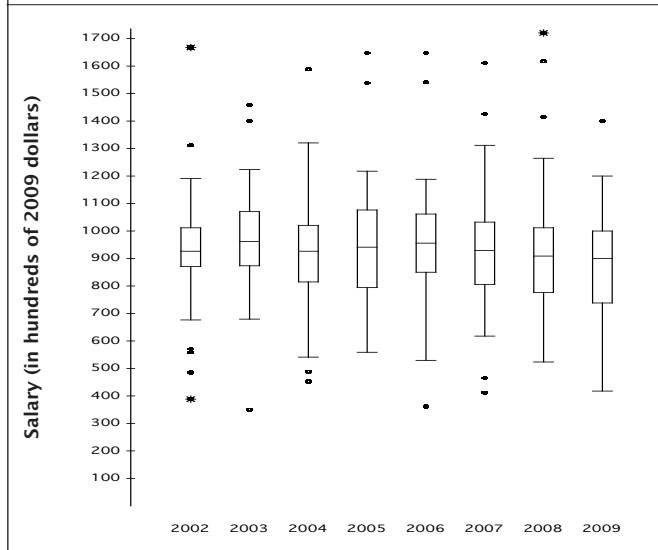
**Government
11-12-Month Starting Salaries**
(in hundreds of dollars)

Ph.D. Year	Min	Q ₁	Median	Q ₃	Max
Total (23 male/9 female)					
2009 M	580	715	850	905	1170
2009 F	400	670	710	859	1130
One year or less experience (16 male/7 female)					
2009 M	580	707	825	877	1000
2009 F	400	635	690	785	956



**Business and Industry
11-12-Month Starting Salaries**
(in hundreds of dollars)

Ph.D. Year	Min	Q ₁	Median	Q ₃	Max
Total (59 male/24 female)					
2009 M	420	740	900	1000	2350
2009 F	500	785	915	992	1070
One year or less experience (49 male/23 female)					
2009 M	470	715	850	1000	1400
2009 F	500	771	910	995	1070



Remarks on Starting Salaries

Key to Tables and Graphs. Salaries are those reported for the fall immediately following the survey cycle. Years listed denote the survey cycle in which the doctorate was received—for example, survey cycle July 1, 2008–June 30, 2009, is designated as 2009. Salaries reported as 9–10 months exclude stipends for summer grants or summer teaching or the equivalent. M and F are male and female respectively. Male and female figures are not provided when the number of salaries available for analysis in a particular category was five or fewer. All categories of “Teaching/Teaching and Research” and “Research Only” contain those recipients employed at academic institutions only.

Graphs. The graphs show standard boxplots summarizing salary distribution information for the years 2002 through 2009. Values plotted for 2002 through 2009 are converted to 2009 dollars using the implicit price deflator prepared annually by the Bureau of Economic Analysis, U.S. Department of Commerce. These categories are based on work activities reported in EENDR. Salaries of postdoctorates are shown separately. They are also included in other academic categories with matching work activities.

For each boxplot the box shows the first quartile (Q1), the median (M), and the third quartile (Q3). The interquartile range (IQR) is defined as $Q3 - Q1$. Think of constructing invisible fences 1.5 IQR below Q1 and 1.5 IQR above Q3. Whiskers are drawn from Q3 to the largest observation that falls below the upper invisible fence and from Q1 to the smallest observation that falls above the lower invisible fence. Think of constructing two more invisible fences, each falling 1.5 IQR above or below the existing invisible fences. Any observation that falls between the fences on each end of the boxplots is called an outlier and is plotted as ● in the boxplots. Any observation that falls outside of both fences either above or below the box in the boxplot is called an extreme outlier and is marked as * in the boxplot.