

Preliminary Report on the 2012–2013 New Doctoral Recipients

William Yslas Vélez, James W. Maxwell, and Colleen Rose

This report presents a statistical profile of recipients of doctoral degrees awarded by departments in the mathematical sciences at universities in the United States during the period July 1, 2012, through June 30, 2013. The report includes a preliminary analysis of the fall 2013 employment plans of 2012–2013 doctoral recipients and a demographic profile summarizing characteristics of citizenship status and gender. The report on the 2012–2013 New Doctoral Recipients will include subsequent reports of additional 2012–2013 doctoral recipients from the departments that did not respond in time for this report, along with additional information provided by the doctoral recipients themselves. A list of the nonresponding departments is on page 620. This report uses the new groupings of doctoral-granting mathematics departments recently adopted by the Joint Data Committee. Additional detail can be found on the AMS website at www.ams.org/annual1-survey/groups.

Doctoral Degrees Awarded

The preliminary data shows that 1,712 new Ph.D.'s were awarded by 284 departments that responded in time for this report. These new Ph.D.'s consist of:

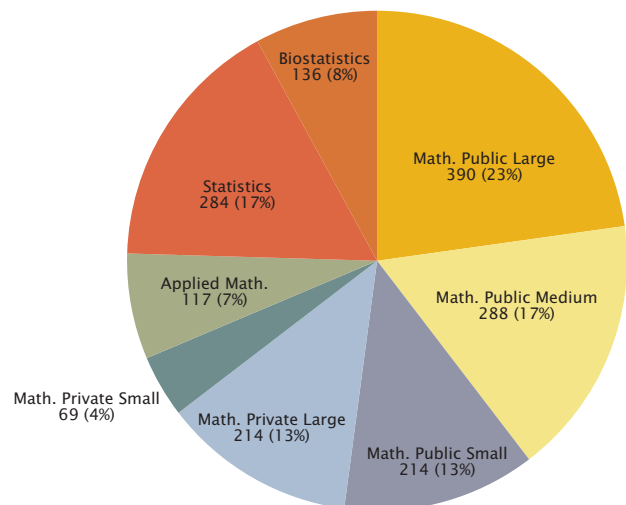
- 1,172 Males
- 540 Females
- 770 U.S. citizens
- 942 Non-U.S. citizens

Based on the data collected so far it is likely that the final count of Ph.D.'s awarded during 2012–2013 will exceed the record total of 1,798 reported for 2011–2012. The departments that have responded in both survey cycles reported 1,708 for 2012–2013 versus 1,672 for 2011–2012, a 2.2% increase.

Preliminary employment data on new Ph.D.'s shows that 9% are unemployed or not seeking and of those whose employment status is known (1,559):

- 79% are U.S. employed
- 14% are Non-U.S. employed
- 49% of those employed in the U.S. are U.S. citizens

Figure P.1: Number and Percentage of Degrees Awarded by Department Grouping*



Total Degrees Awarded: 1,712

*A description of the department groupings can be viewed at www.ams.org/annual-survey/groups.

William Yslas Vélez is a professor in the Department of Mathematics at University of Arizona. James W. Maxwell is AMS coordinator of special projects. Colleen A. Rose is AMS survey analyst.

Doctoral Degrees Awarded

The graphics below provide a snapshot of the preliminary data on new doctorates by gender, citizenship, employment status, employer type, and field of thesis. Watch for the release of the final report (Summer 2014) to see the full statistical profile along with comparative data on this cohort of new doctoral recipients.

Figure P.2: Gender of Doctoral Recipients by Department Grouping

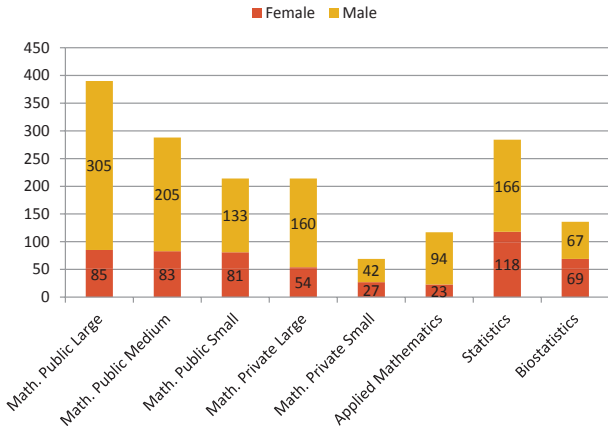


Figure P.3: Citizenship of Doctoral Recipients by Department Grouping

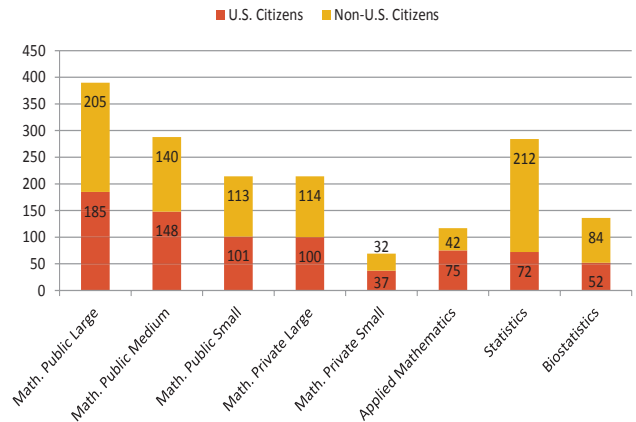
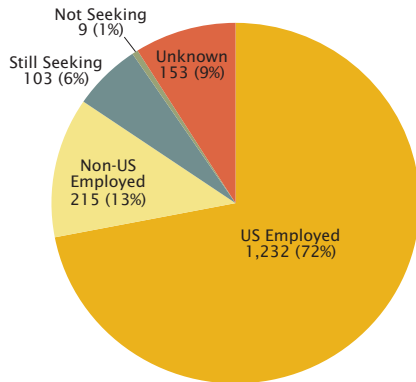
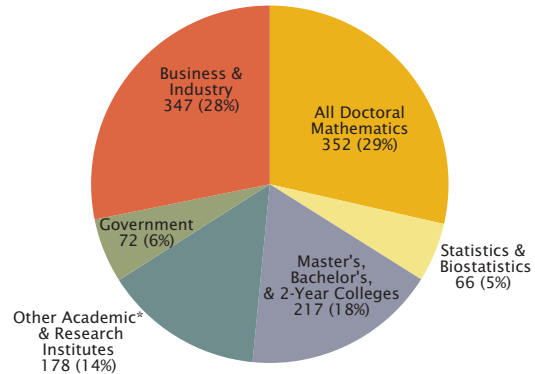


Figure P.4: Employment Status



Total Degrees Awarded: 1,712

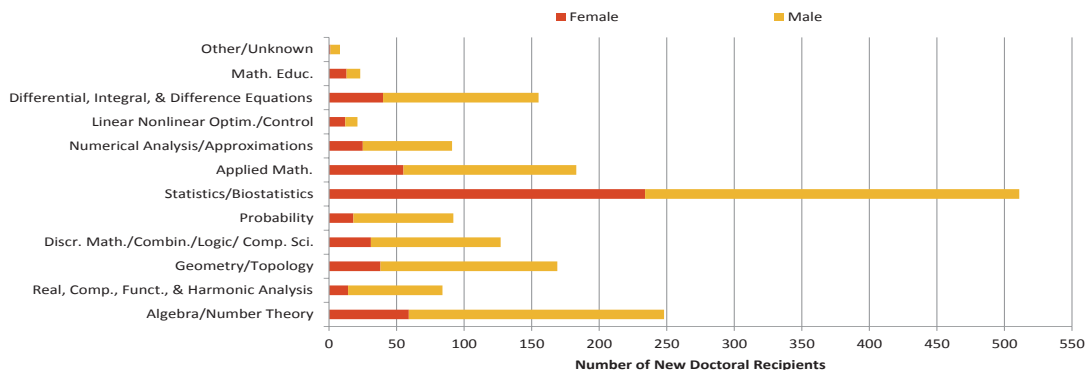
Figure P.5: U.S. Employed by Type of Employer



Total U.S. Employed: 1,232

*Other Academic consists of departments outside the mathematical sciences including numerous medical related units.

Figure P.6: New Doctoral Recipients by Field of Thesis and Gender



Departmental Response Rates

Survey Response Rates by New Groupings

Doctorates Granted Departmental Response Rates

Math. Public Large	24 of 26 including	0 with no degrees
Math. Public Medium	40 of 40 including	1 with no degrees
Math. Public Small	60 of 64 including	9 with no degrees
Math. Private Large	23 of 24 including	0 with no degrees
Math. Private Small	26 of 28 including	2 with no degrees
Applied Math.	28 of 30 including	3 with no degrees
Statistics	53 of 59 including	3 with no degrees
Biostatistics	30 of 44 including	6 with no degrees
Total	284 of 315 including	24 with no degrees

Doctoral Degrees Not Yet Reported

The following mathematical sciences, applied mathematics, statistics, and biostatistics departments had not responded in time for their data to be included in this report. Those departments listed with an "*" have yet to respond as of March 29, 2014. Every effort will be made to collect the responses from these departments for inclusion in the New Doctoral Recipients Report which will be published in the August 2014 issue of *Notices of the AMS*.

Departments yet to respond can obtain copies of the Doctorates Granted survey forms on the AMS website at www.ams.org/annual-survey/surveyforms, by sending email to ams-survey@ams.org, or by calling 1-800-321-4267, ext. 4189.

Math. Public Large

University of California, Santa Barbara
University of Illinois at Chicago

Math. Public Medium

All departments responded.

Math. Public Small

Wayne State University
University of Missouri-Kansas City
Utah State University
University of Vermont

Math. Private Large

All departments responded.

Math. Private Small

Howard University
Syracuse University

Applied Mathematics

Columbia University
Stony Brook University

Statistics

University of California, Los Angeles
Colorado State University
Iowa State University*
Harvard University
Oklahoma State University
Baylor University

Biostatistics

Cornell University
LSU Health Science Center, New Orleans
Rutgers School of Public Health*
St. Louis University College for Public Health & Social Justice
The University of Albany, SUNY
Tulane University
University of California, Los Angeles
University of Cincinnati, Medical College
University of Illinois, Chicago
University of Kentucky
University of Louisville
University of Massachusetts, Amherst
University of Oklahoma, Health Science Center
University of South Carolina
University of South Florida
Virginia Commonwealth University