

# Preliminary Report on the 2013–2014 New Doctoral Recipients

*William Yslas Vélez, James W. Maxwell, and Colleen Rose*

This report presents a statistical profile of recipients of doctoral degrees awarded by departments in the mathematical sciences at universities in the United States during the period July 1, 2013, through June 30, 2014. The report includes a preliminary analysis of the fall 2014 employment plans of 2013–2014 doctoral recipients and a demographic profile summarizing characteristics of citizenship status and gender. The report on the 2013–2014 New Doctoral Recipients will include subsequent reports of additional 2013–2014 doctoral recipients from the departments that did not respond in time for this report, along with additional information provided by the doctoral recipients themselves. A list of the nonresponding departments is on page 273. This report uses the new groupings of doctoral-granting mathematics departments adopted by the Joint Data Committee starting with the 2012 AMS-ASA-IMS-MAA-SIAM Annual Survey of the Mathematical Sciences. Additional detail can be found on the AMS website at [www.ams.org/annual-survey/groups](http://www.ams.org/annual-survey/groups).

## Doctoral Degrees Awarded

The preliminary data shows that 1,728 new PhDs were awarded by 274 departments that responded in time for this report. These new PhDs consist of:

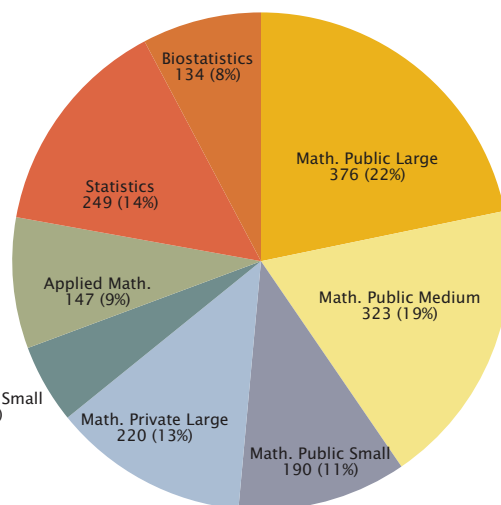
- 1,205 Males
- 523 Females
- 842 U.S. citizens
- 886 Non-U.S. citizens

Based on the data collected so far it is likely that the final count of PhDs awarded during 2013–2014 will exceed the record total of 1,843 reported for 2012–2013. The departments that have responded in both survey cycles reported 1,703 for 2013–2014 versus 1,658 for 2012–2013, a 2.7% increase.

Preliminary employment data on new PhDs shows that 9% are unemployed or not seeking employment and of those whose employment status is known (1,574):

- 78% are U.S. employed
- 13% are Non-U.S. employed
- 54% of those employed in the U.S. are U.S. citizens

**Figure P.1: Number and Percentage of Degrees Awarded by Department Grouping\***



**Total Degrees Awarded: 1,728**

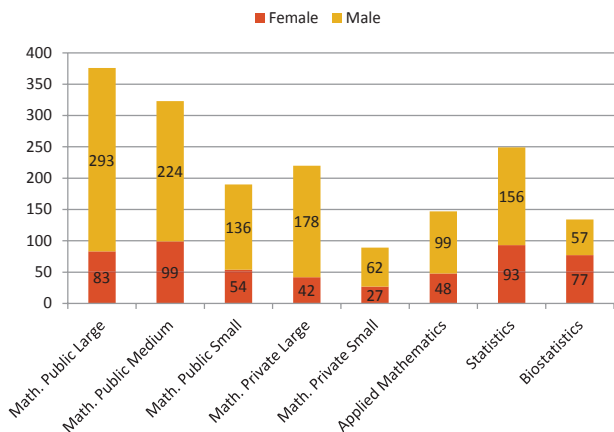
\*A description of the department groupings can be viewed at [www.ams.org/annual-survey/groups](http://www.ams.org/annual-survey/groups).

*William Yslas Vélez is a professor in the Department of Mathematics at University of Arizona. James W. Maxwell is AMS coordinator of special projects. Colleen A. Rose is AMS survey analyst.*

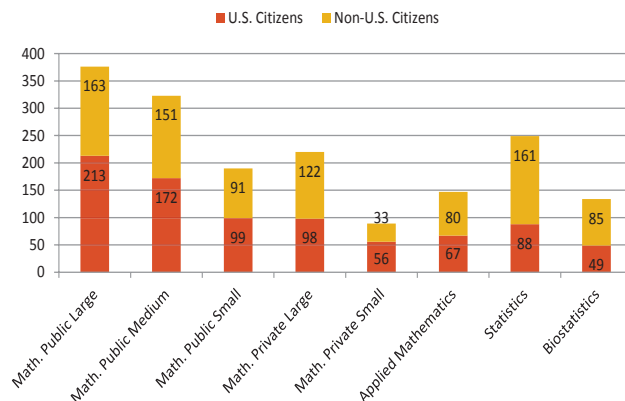
## Doctoral Degrees Awarded

The graphics below provide a snapshot of the preliminary data on new doctorates by gender, citizenship, employment status, employer type, and field of thesis. Watch for the release of the final report (Summer 2015) to see the full statistical profile along with comparative data on this cohort of new doctoral recipients.

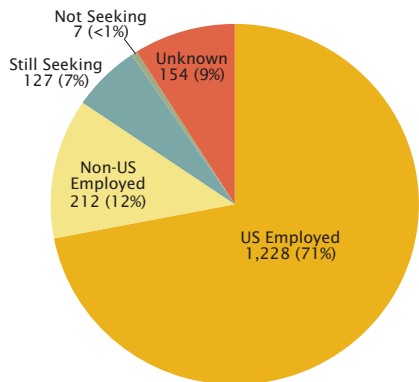
**Figure P.2: Gender of Doctoral Recipients by Department Grouping**



**Figure P.3: Citizenship of Doctoral Recipients by Department Grouping**

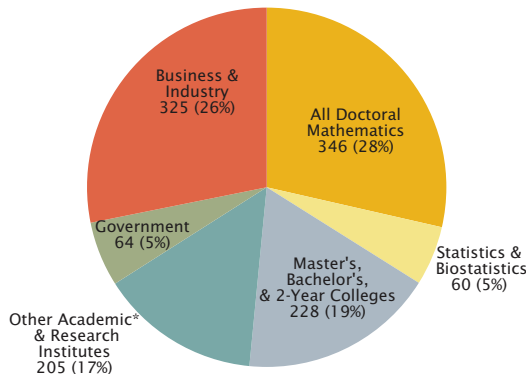


**Figure P.4: Employment Status**



**Total Degrees Awarded: 1,728**

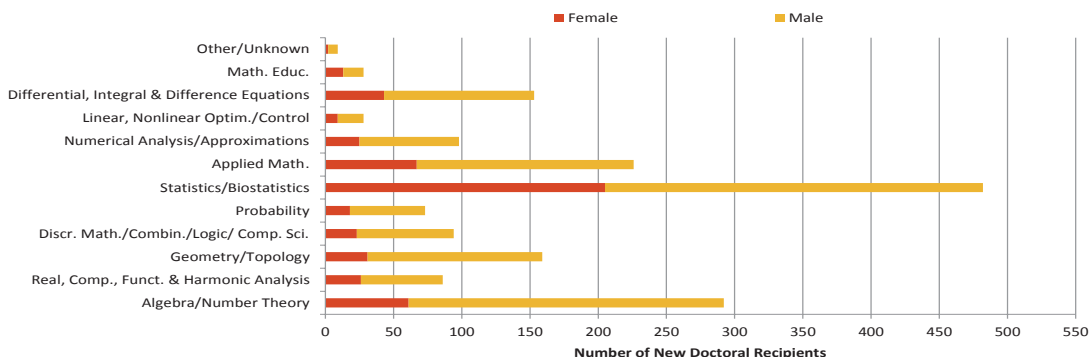
**Figure P.5: U.S. Employed by Type of Employer**



**Total U.S. Employed: 1,228**

\*Other Academic consists of departments outside the mathematical sciences including numerous medical related units.

**Figure P.6: New Doctoral Recipients by Field of Thesis and Gender**



## Departmental Response Rates

### Survey Response Rates by New Groupings

#### Doctorates Granted Departmental Response Rates

<b>Math. Public Large</b>	25 of 26 including	0 with no degrees
<b>Math. Public Medium</b>	40 of 40 including	0 with no degrees
<b>Math. Public Small</b>	57 of 64 including	6 with no degrees
<b>Math. Private Large</b>	24 of 24 including	0 with no degrees
<b>Math. Private Small</b>	26 of 28 including	4 with no degrees
<b>Applied Math.</b>	27 of 31 including	2 with no degrees
<b>Statistics</b>	45 of 58 including	1 with no degrees
<b>Biostatistics</b>	30 of 44 including	6 with no degrees
<b>Total</b>	274 of 315 including	19 with no degrees

## Doctoral Degrees Not Yet Reported

The following mathematical sciences, applied mathematics, statistics, and biostatistics departments had not responded in time for their data to be included in this report. Those departments listed with an "\*" have yet to respond as of January 24, 2015. Every effort will be made to collect the responses from these departments for inclusion in the New Doctoral Recipients Report which will be published in the August 2015 issue of *Notices of the AMS*.

Departments yet to respond can obtain copies of the Doctorates Granted survey forms on the AMS website at [www.ams.org/annual-survey/surveyforms](http://www.ams.org/annual-survey/surveyforms), by sending email to [ams-survey@ams.org](mailto:ams-survey@ams.org), or by calling 1-800-321-4267, ext. 4189.

### Math. Public Large

University of Illinois at Chicago

### Math. Public Medium

All departments responded.

### Math. Public Small

Delaware State University  
University of Missouri-St Louis  
University of Nevada, Las Vegas  
University of North Carolina at Charlotte  
University of Southern Mississippi  
University of Toledo  
Utah State University

### Math. Private Large

All departments responded.

### Math. Private Small

Syracuse University  
University of Denver

### Applied Mathematics

Columbia University  
University of Colorado, Boulder  
University of Colorado, Denver  
University of Pennsylvania

### Statistics

Iowa State University  
North Carolina State University  
North Dakota State University  
Oklahoma State University  
Pennsylvania State University  
University of California, Berkeley  
University of California, Los Angeles  
University of California, Santa Barbara  
University of Georgia  
University of Illinois- Urbana-Champaign  
University of Kentucky  
University of Virginia  
Virginia Polytechnic Institute and State University

### Biostatistics

Cornell University  
Columbia University  
Cornell University  
Medical College of Wisconsin  
St Louis University College for Public Health & Social Justice  
University of Albany, SUNY  
University of California, Los Angeles  
University of Cincinnati  
University of Illinois at Chicago  
University of Kentucky  
University of Louisville  
University of Oklahoma, Health Science Center  
University of South Carolina  
University of South Florida