

Starting Salaries of the 2013-2014 Doctoral Recipients

The starting salary figures were compiled from information gathered on the EENDR questionnaires sent to 1,702 individuals using addresses provided by the departments granting the degrees; 821 individuals responded between late October and April. Responses with insufficient data or from individuals who indicated they had part-time or non-U.S. employment were excluded. Numbers of usable responses for each salary category are reported in the following tables.

Readers should be warned that the data in this report are obtained from a self-selected sample, and inferences from them may not be representative of the full population.

Remarks on Starting Salaries

Key to Tables and Graphs. Salaries are those reported for the fall immediately following the survey cycle. Years listed denote the survey cycle in which the doctorate was received—for example, survey cycle July 1, 2013–June 30, 2014, is designated as 2014. Salaries reported as 9–10 months exclude stipends for summer grants or summer teaching or the equivalent. M and F are male and female respectively. Male and female figures are not provided when the number of salaries available for analysis in a particular category was five or fewer. All categories of “Teaching/Teaching and Research” and “Research Only” contain those recipients employed at academic institutions only.

Graphs. The graphs show standard boxplots summarizing salary distribution information for the years 2007 through 2014. Values plotted for 2007 through 2013 are converted to 2014 dollars using the implicit price deflator prepared annually by the Bureau of Economic Analysis, U.S. Department of Commerce. These categories are based on work activities reported in EENDR. Salaries of postdoctorates are shown separately. They are also included in other academic categories with matching work activities.

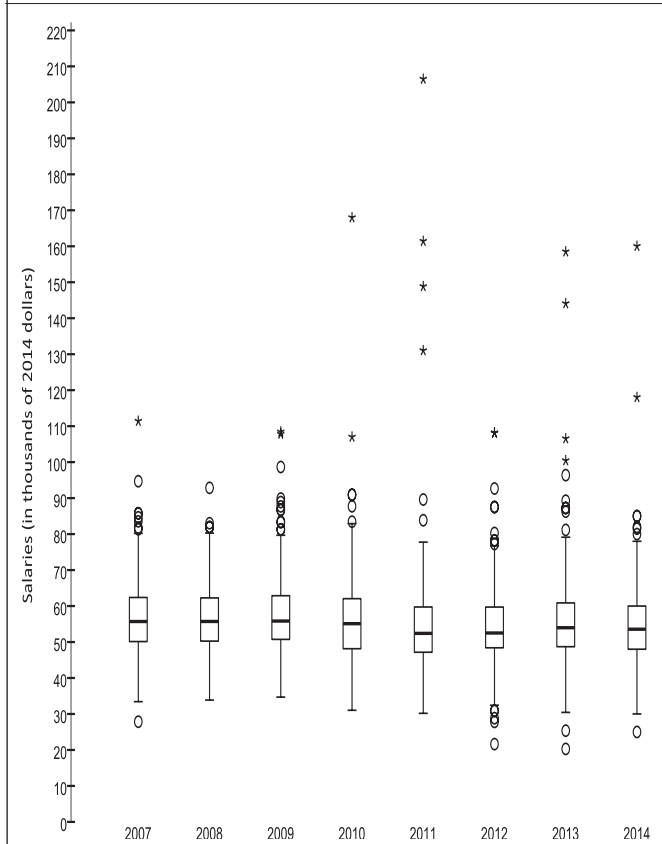
For each boxplot the box shows the first quartile (Q1), the median (M), and the third quartile (Q3). The interquartile range (IQR) is defined as $Q3 - Q1$. Think of constructing invisible fences 1.5 IQR below Q1 and 1.5 IQR above Q3. Whiskers are drawn from Q3 to the largest observation that falls below the upper invisible fence and from Q1 to the smallest observation that falls above the lower invisible fence. Think of constructing two more invisible fences, each falling 1.5 IQR above or below the existing invisible fences. Any observation that falls between the fences on each end of the boxplots is called an outlier and is plotted as \circ in the boxplots. Any observation that falls outside of both fences either above or below the box in the boxplot is called an extreme outlier and is marked as $*$ in the boxplot.

Starting salary information starts on page 2.

2014 Annual Survey of the Mathematical Sciences in the United States

Academic Teaching/Teaching and Research 9-10-Month Starting Salaries* (in thousands of dollars)

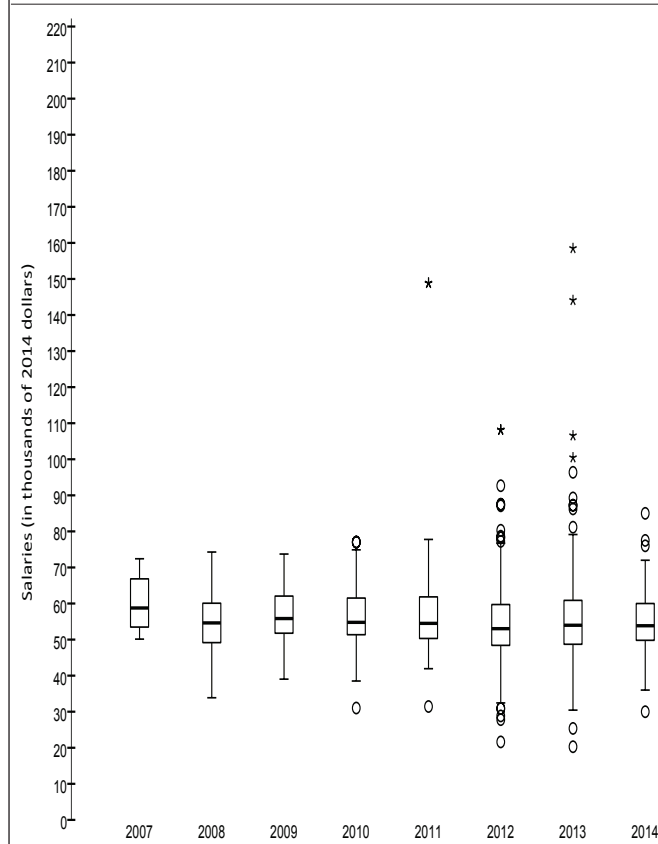
Ph.D. Year	Min	Q ₁	Median	Q ₃	Max	Reported Median in 2014 \$
1995	22.0	23.0	35.0	38.2	64.0	50.4
1998*	14.0	34.0	37.0	41.0	70.0	50.9
2000	25.0	38.0	41.5	45.0	65.0	55.0
2005	28.0	43.0	46.5	50.6	100.2	54.8
2006	20.0	45.0	49.0	55.0	135.0	56.0
2007	25.0	45.0	50.4	56.0	100.0	55.7
2008	31.0	46.0	51.0	56.9	85.0	55.7
2009	32.0	46.9	51.5	58.0	100.0	55.8
2010	29.0	45.0	51.5	58.0	157.0	55.1
2011	28.8	45.0	50.0	57.0	197.0	52.4
2012	21.0	47.0	51.5	58.0	105.0	53.0
2013	20.0	48.0	53.2	60.0	156.2	54.0
2014	25.0	48.0	54.0	60.0	160.0	54.0
2010 M	29.0	45.4	51.0	58.0	157.0	
2010 F	30.0	45.0	52.2	57.3	85.0	
2011 M	28.8	45.0	50.0	57.0	197.0	
2011 F	36.0	46.0	51.0	60.0	154.0	
2012 M	28.0	48.0	52.0	58.1	105.0	
2012 F	21.0	47.0	51.0	56.0	78.0	
2013 M	20.0	47.9	53.0	60.0	156.2	
2013 F	30.0	50.0	54.9	61.9	105.0	
Total (187 male/108 female)						
2014 M	36.0	48.0	53.0	60.0	160.0	
2014 F	30.0	50.0	51.5	55.0	85.0	
One year or less experience (151 male/97female)						
2014 M	36.0	48.0	53.0	60.0	160.0	
2014 F	25.0	50.0	54.0	60.0	85.0	



* Postdoctoral salaries are included from 1998 forward.

Academic Postdoctorates Only* 9-10-Month Starting Salaries (in thousands of dollars)

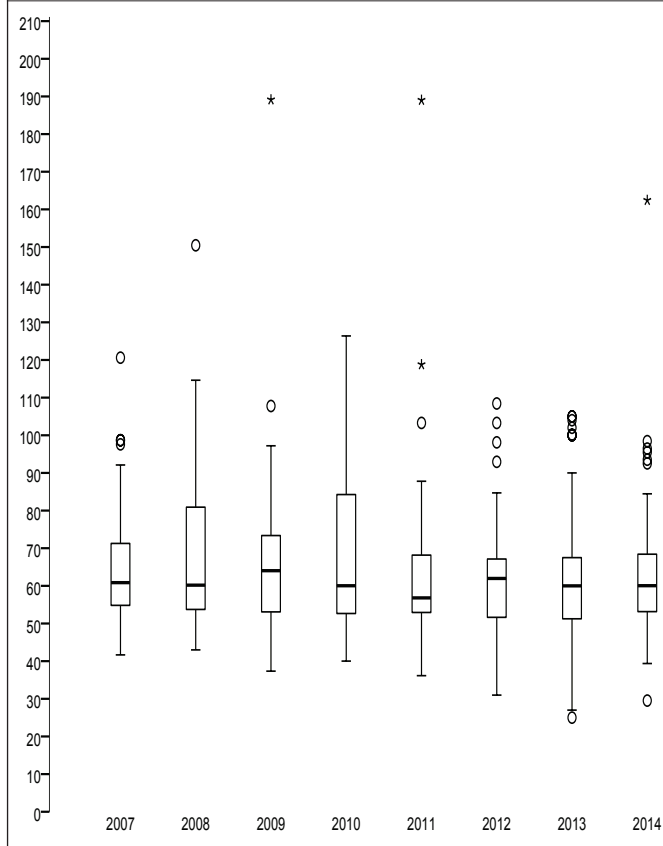
Ph.D. Year	Min	Q ₁	Median	Q ₃	Max	Reported Median in 2014 \$
2000	30.0	38.5	42.0	45.0	55.0	55.6
2003	24.0	42.0	45.0	48.0	60.0	56.3
2004	30.0	42.0	45.0	49.0	62.5	54.8
2005	31.0	45.0	46.0	50.0	61.5	54.2
2006	20.0	44.1	48.0	50.0	67.0	54.9
2007	25.0	45.0	48.3	55.0	65.0	53.8
2008	31.0	45.0	50.0	55.0	68.0	54.6
2009	36.0	47.9	51.5	57.1	68.0	55.8
2010	29.0	48.0	51.0	56.5	72.0	54.6
2011	30.0	48.0	52.0	59.0	142.0	54.5
2012	27.0	49.9	52.3	58.0	76.4	53.8
2013	30.0	48.0	53.0	60.0	76.0	53.8
2014	30.0	48.9	53.8	60.0	85.0	53.8
2010 M	29.0	48.0	50.6	57.3	72.0	
2010 F	36.0	47.0	52.0	56.0	72.0	
2011 M	30.0	48.0	52.0	58.5	74.2	
2011 F	40.0	48.0	52.0	65.0	142.0	
2012 M	49.5	50.0	55.1	60.0	76.4	
2012 F	27.0	43.0	47.0	53.0	67.0	
2013 M	30.0	48.0	53.0	60.0	76.0	
2013 F	30.0	49.3	52.0	59.3	70.0	
Total (69 male/34 female)						
2014 M	40.0	50.0	55.0	60.0	76.0	
2014 F	30.0	46.0	51.5	55.0	85.0	
One year or less experience (69 male/34 female)						
2014 M	40.0	50.0	55.0	60.0	76.0	
2014 F	30.0	46.0	51.5	55.0	85.0	



* A postdoctoral appointment is a temporary position primarily intended to provide an opportunity to extend graduate training or to further research experience.

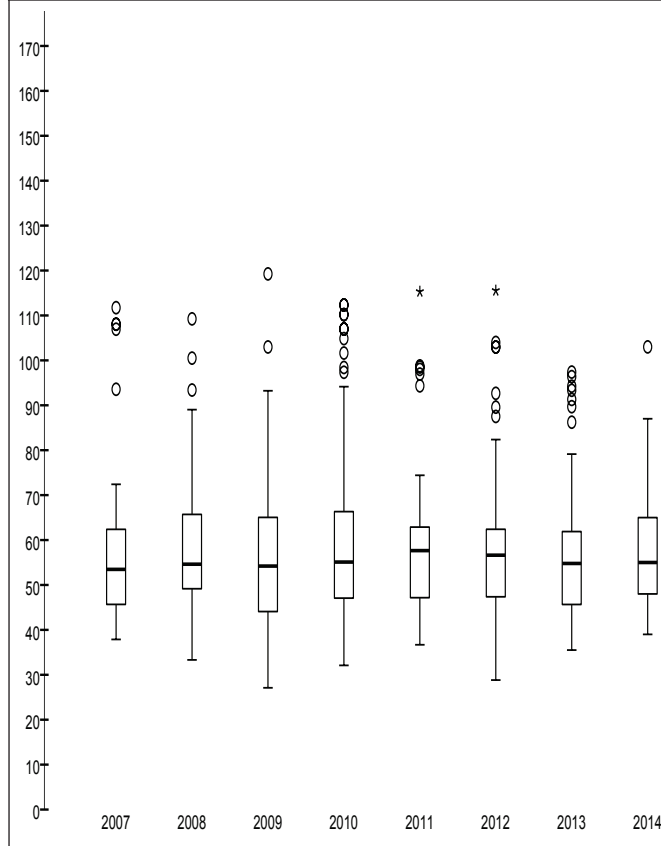
**Academic Teaching/Teaching and Research
11-12-Month Starting Salaries*
(in thousands of dollars)**

Ph.D. Year	Min	Q ₁	Median	Q ₃	Max	Reported Median in 2014 \$
1995	30.0	35.4	41.0	47.8	60.0	59.0
1998*	27.5	40.5	48.0	57.5	70.0	66.0
2000	30.0	40.0	48.5	60.0	117.0	64.2
2005	27.0	45.0	50.0	61.5	90.2	58.9
2006	20.0	45.0	55.0	70.0	100.0	62.9
2007	34.0	45.0	50.4	60.0	110.0	56.1
2008	40.0	50.0	56.0	75.3	140.0	61.2
2009	35.0	49.9	60.0	68.0	177.2	65.0
2010	38.0	50.0	57.0	80.0	120.0	61.0
2011	35.0	51.4	55.0	65.5	183.0	57.6
2012	30.0	50.0	60.0	65.0	120.0	61.8
2013	25.0	51.3	60.0	67.5	105.0	60.9
2014	39.0	48.0	54.0	65.0	87.0	54.0
2010 M	40.0	48.0	55.0	77.0	110.0	
2010 F	38.0	58.1	64.5	91.0	120.0	
2011 M	28.8	45.0	50.0	57.0	197.0	
2011 F	36.0	46.0	51.0	60.0	154.0	
2012 M	30.0	50.0	60.0	68.0	120.0	
2012 F	39.0	50.8	60.0	62.0	82.0	
2013 M	25.0	54.5	60.0	68.0	105.0	
2013 F	39.2	50.3	55.0	65.8	105.0	
Total (39 male/21 female)						
2014 M	30.0	52.0	60.0	65.5	166.0	
2014 F	50.0	55.0	65.0	80.0	100.0	
One year or less experience (35 male/17 female)						
2014 M	30.0	52.5	60.0	65.5	165.0	
2014 F	50.0	63.0	65.0	80.0	100.0	



**Academic Research Only
11-12-Month Starting Salaries
(in thousands of dollars)**

Ph.D. Year	Min	Q ₁	Median	Q ₃	Max	Reported Median in 2014 \$
2000	30.0	36.5	40.0	52.9	100.0	53.0
2003	30.0	40.5	45.5	60.0	90.0	56.9
2004	30.0	37.8	44.0	51.0	88.0	53.5
2005	35.0	40.0	47.5	57.0	86.0	56.0
2006	30.0	45.0	50.0	60.0	84.0	57.2
2007	34.0	41.5	48.0	54.0	100.3	53.5
2008	30.5	45.0	50.0	57.7	100.0	54.6
2009	25.0	41.0	50.0	60.0	110.0	54.2
2010	30.0	44.0	51.5	61.5	105.5	55.1
2011	35.0	45.0	55.0	60.0	110.0	57.6
2012	28.0	46.0	55.0	60.6	112.2	56.6
2013	35.0	45.0	54.0	61.0	96.0	54.8
2014	39.0	48.0	55.0	65.0	103.0	55.0
2010 M	30.0	42.1	50.0	60.0	105.0	
2010 F	40.0	45.0	54.0	80.0	100.0	
2011 M	35.0	43.0	50.0	60.0	110.0	
2011 F	43.0	55.0	59.5	66.1	90.0	
2012 M	30.0	46.5	54.5	60.0	87.0	
2012 F	28.0	46.5	55.0	80.0	112.2	
2013 M	35.0	45.0	52.8	60.3	95.0	
2013 F	41.0	45.0	55.0	65.0	96.0	
Total (44 male/20 female)						
2014 M	39.0	48.0	54.0	65.0	103.0	
2014 F	42.0	48.0	55.0	61.6	87.0	
One year or less experience (40 male/15 female)						
2014 M	39.0	47.5	52.0	65.0	85.0	
2014 F	42.0	50.5	55.0	63.1	87.0	



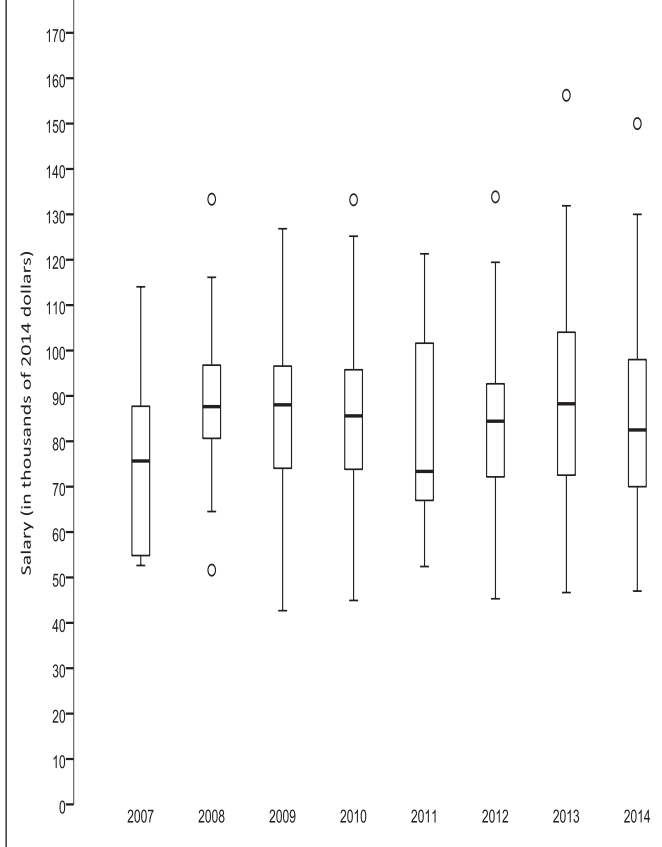
* Postdoctoral salaries are included from 1998 forward.

2014 Annual Survey of the Mathematical Sciences in the United States

Government 11-12-Month Starting Salaries (in thousands of dollars)

Ph.D. Year	Min	Q ₁	Median	Q ₃	Max	Reported Median in 2014 \$
1995	37.0	44.0	49.4	50.7	65.0	71.1
2000	44.0	54.0	60.0	64.0	83.0	79.5
2004	51.0	72.0	73.8	78.0	92.0	89.8
2005	48.0	61.0	75.2	84.8	97.2	88.6
2006	40.0	67.8	80.0	96.1	114.0	91.5
2007	48.0	50.0	69.0	80.0	104.0	76.9
2008	48.0	75.0	81.5	90.0	124.0	89.0
2009	40.0	69.6	82.5	90.3	117.0	89.4
2010	42.0	69.0	80.0	89.5	124.5	85.6
2011	50.0	64.0	70.0	96.9	115.7	73.4
2012	44.0	70.1	82.0	90.0	130.0	84.4
2013	46.0	75.1	87.0	102.5	154.0	88.3
2014	47.0	70.0	82.5	97.5	150.0	82.5
2010 M	62.0	70.5	80.0	89.0	124.5	
2010 F	42.0	66.0	73.7	90.1	117.0	
2011 M	50.0	65.0	83.2	100.6	115.7	
2011 F	52.0	63.9	68.5	85.0	105.0	
2012 M	60.0	71.5	82.0	89.6	130.0	
2012 F	44.0	68.3	81.2	91.5	116.0	
2013 M	25.0	54.5	60.0	68.0	105.0	
2013 F	39.2	50.3	55.0	65.8	105.0	

Total (28 male/10 female)						
2014 M	60.0	75.0	88.2	99.0	150.0	
2014 F	47.0	58.0	70.0	84.9	105.0	
One year or less experience (24 male/10 female)						
2014 M	60.0	75.0	87.1	96.8	130.0	
2014 F	47.0	61.6	70.0	88.8	105.0	



Business and Industry 11-12-Month Starting Salaries (in thousands of dollars)

Ph.D. Year	Min	Q ₁	Median	Q ₃	Max	Reported Median in 2014 \$
1995	28.8	48.0	56.8	69.0	125.0	81.8
2000	20.0	64.0	72.0	80.0	150.0	95.3
2004	40.0	72.8	81.7	90.0	180.0	99.4
2005	51.0	75.5	87.0	97.8	200.0	102.6
2006	34.0	80.0	90.0	100.0	155.0	102.9
2007	40.0	78.0	90.0	100.0	250.0	100.3
2008	51.8	78.0	90.0	100.0	170.0	98.3
2009	42.0	74.6	90.0	100.0	235.0	97.6
2010	28.0	75.0	90.0	100.0	155.0	96.3
2011	50.0	85.0	94.3	102.3	190.0	98.8
2012	52.5	76.5	95.0	120.0	200.0	97.8
2013	30.0	85.0	100.0	110.0	280.0	101.5
2014	50.0	83.0	100.0	115.0	300.0	100.0
2010 M	52.0	77.6	90.0	100.0	155.0	
2010 F	28.0	72.9	90.0	96.8	120.0	
2011 M	65.0	90.0	95.0	100.1	190.0	
2011 F	50.0	85.0	91.0	106.8	165.0	
2012 M	58.5	85.0	100.0	120.0	145.0	
2012 F	52.5	68.5	81.3	94.8	105.0	
2013 M	35.0	45.0	52.8	60.3	95.0	
2013 F	41.0	45.0	55.0	65.0	96.0	

Total (108 male/39 female)						
2014 M	56.0	86.2	100.0	120.0	300.0	
2014 F	50.0	80.0	91.0	101.0	140.0	
One year or less experience (93 male/35 female)						
2014 M	56.0	85.5	100.0	120.0	300.0	
2014 F	50.0	79.5	86.0	101.0	140.0	

