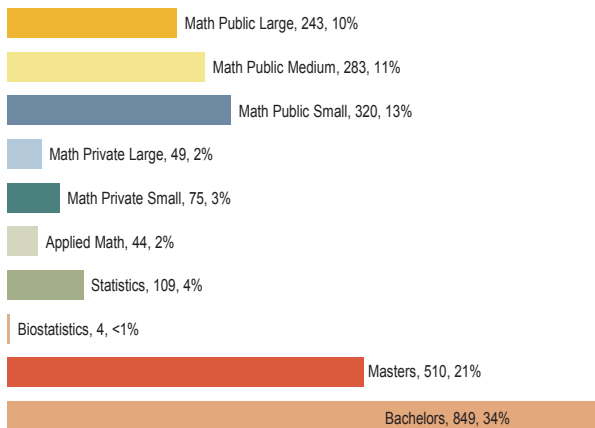


Undergraduate Course Enrollments

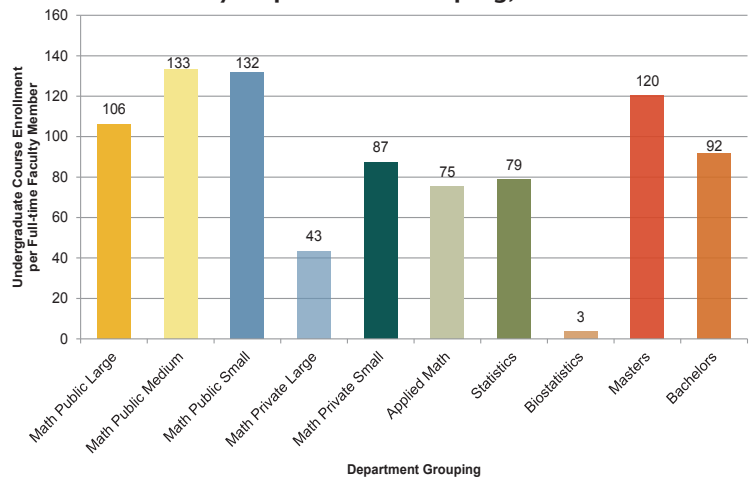
The 2016 estimate of total undergraduate enrollments in MS courses is 2,518,000. With a standard error of 26,000, this figure cannot be used to conclude that enrollments have changed significantly from the 2015 estimate of 2,487,000. MS departments reported an overall decrease of 4% in the number of undergraduate course enrollments per full-time faculty member.

Figure UE.1: Undergraduate Course Enrollments (thousands) by Department Grouping, Fall 2016



Total Undergraduate Enrollments (thousands): 2,487

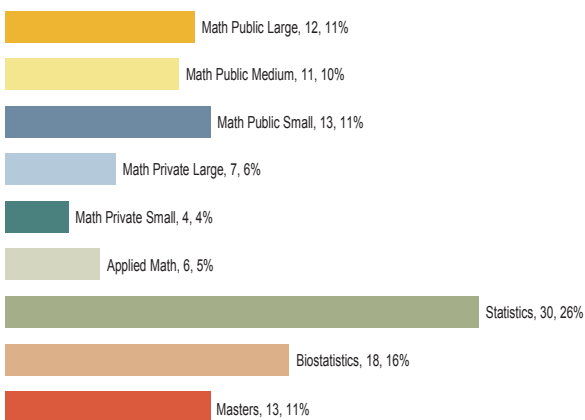
Figure UE.2: Undergraduate Course Enrollment per Full-Time Faculty Member, by Department Grouping, Fall 2016



Graduate Course Enrollments

Estimated total graduate course enrollments have increased from 110,000 to 113,000 (with a standard error of 5,000). MS departments reported an overall decrease of 1% in the estimated number of graduate course enrollments per full-time tenured and tenure-eligible faculty member.

Figure GE.1: Graduate Course Enrollments (thousands) by Department Grouping, Fall 2016



Total Graduate Enrollments (thousands): 113

Figure GE.2: Graduate Course Enrollment per Full-Time Tenured & Tenure-eligible Faculty Member, by Department Grouping, Fall 2016

