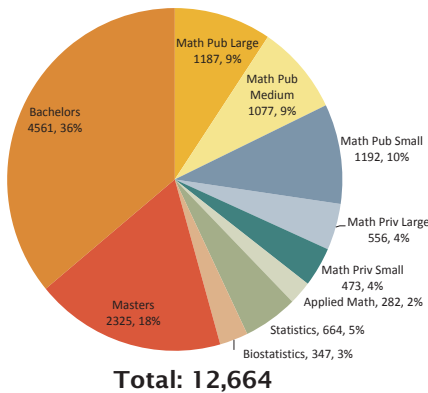


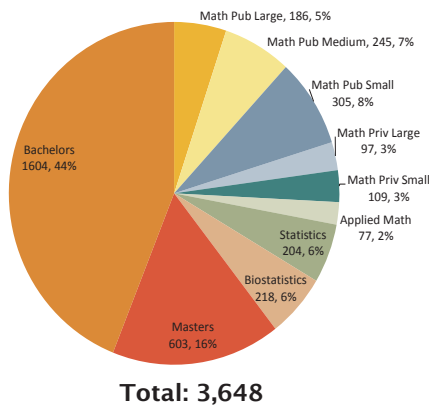
## Doctoral Faculty

The estimated number of full-time doctoral (i.e., doctorate-holding) faculty in MS is 20,904. In Math this estimate is 18,758 (with a standard error of 99), down slightly from last year's number of 18,932; in Stats it is 2,146, down 2% from 2,189 last year. Respectively for Math and Stats, the total doctoral tenured faculty are 11,653 and 1,011 compared to 11,909 and 1,088 for fall 2014. Sixty-six percent of all doctoral tenured faculty in Math are full professors, while 17% of all doctoral faculty are tenure-eligible. Females hold 22% of all doctoral tenured faculty and 18% of doctoral tenured full professor appointments.

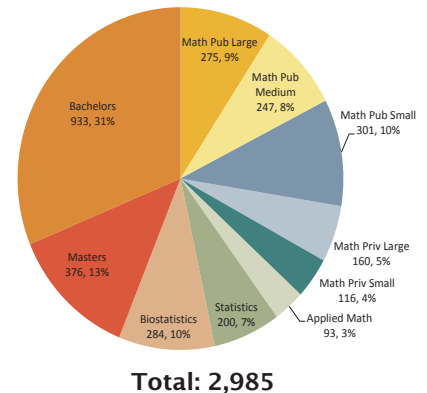
**Figure D.1: Full-time Tenured Doctoral Faculty by Department Grouping**



**Figure D.2: Full-time Tenure-eligible Doctoral Faculty by Department Grouping**



**Figure D.3: Full-time Non-tenure-track Doctoral Faculty (excluding Postdocs) by Department Grouping**



Features of full-time doctoral faculty data:

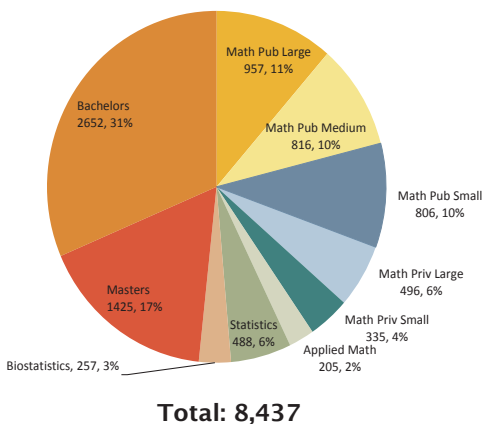
- 76% of all tenured doctoral faculty in the Doctoral Math Group are full professors (3,615), with 71% of these appointments in Math Public departments.
- Tenure-eligible doctoral faculty increased 1% among the Doctoral Math Group, while the Bachelors and Biostatistics Groups both showed a 2% decrease.
- Postdoctoral appointments among the Doctoral Math Group decreased to 1,231 for fall 2015. This is a 2% decrease from last year and 15% of the total full-time doctoral faculty in these departments (the same as last year). In Stats postdocs increased 9% to 229.

- Females hold 21% of all postdoctoral appointments (the same as last year).
- 15% of the doctoral faculty in the Doctoral Math Group are in non-tenure-track positions. The majority of these faculty hold renewable (79%) and fixed-term appointments (17%); last year these percentages were 77% and 20%, respectively.

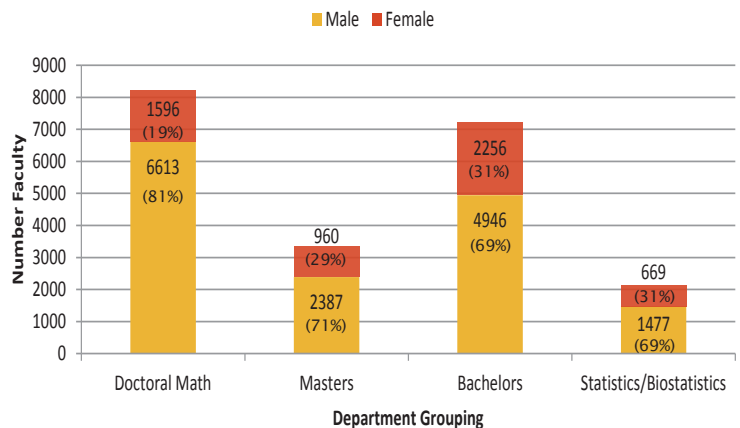
Features of part-time doctoral faculty data:

- Total part-time doctoral faculty decreased 1% to 2,075 from 2,091 last year. Of these, 25% receive benefits, and 5% are in phased retirement.
- 27% of all part-time doctoral faculty are in Doctoral Math departments.
- Females hold 29% of all part-time doctoral faculty positions (up from 28% last year).

**Figure D.4: Full-time Tenured Doctoral Full Professor Faculty by Department Grouping**



**Figure D.5: Gender of Full-time Doctoral Faculty Total: 20,904**



# Annual Survey of the Mathematical Sciences

www.ams.org/annual-survey

Table DF.1: Doctoral Full-Time Faculty, Fall 2015

Full-time Faculty	GROUP								Totals		
	All Doctoral Math Combined		Masters		Bachelors		Statistics & Biostatistics				
	Male	Female	Male	Female	Male	Female	Male	Female	ALL	Male	Female
<b>With a Doctorate</b>	<b>6613</b>	<b>1596</b>	<b>2387</b>	<b>960</b>	<b>4946</b>	<b>2256</b>	<b>1477</b>	<b>669</b>	<b>20904</b>	<b>15423</b>	<b>5481</b>
Tenured	4102	665	1739	586	3287	1274	779	232	12664	9907	2757
Full Professors	3203	412	1107	318	1987	665	618	127	8437	6915	1522
Other	899	253	632	268	1300	609	161	105	4227	2992	1235
Tenure-eligible (without tenure)	759	260	366	237	974	630	282	140	3648	2381	1267
Postdoctoral appointments	982	249	41	2	70	34	174	55	1607	1267	340
Non-tenure-track	770	422	241	135	615	318	242	242	2985	1868	1117
Renewable appointments	594	347	175	121	415	241	206	229	2328	1390	938
Fixed-term appointments	150	54	62	14	184	67	30	11	572	426	146
Other appointments	26	21	4	0	16	10	6	2	85	52	33