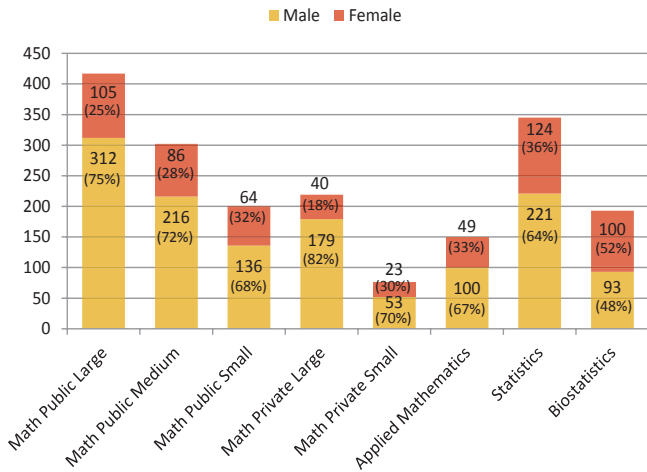


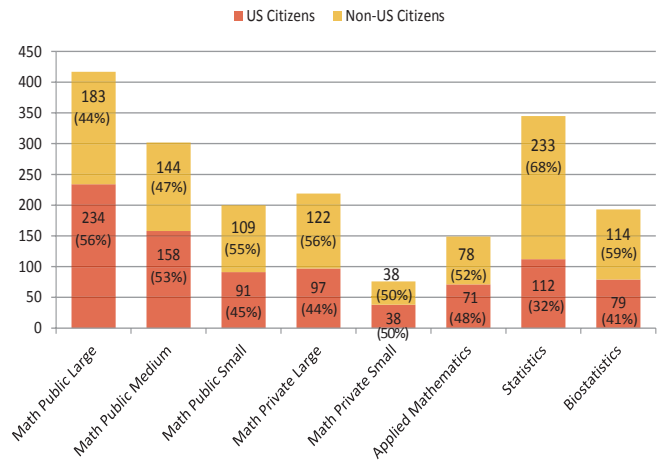
## Demographics

Gender and citizenship was known for all 1,901 new PhDs reported for 2014-15. The percentage of US citizens is 46%, down from 48% last year. Females accounted for 31% of the US citizen total, up from 28% last year. Non-US citizens receiving a PhD increased to 54% from 52% last year. 9% (64) of the non-US citizens employed in the US have permanent visa status, down from 11% last year.

**Figure D.1: Gender of Doctoral Recipients by Degree-Granting Grouping**



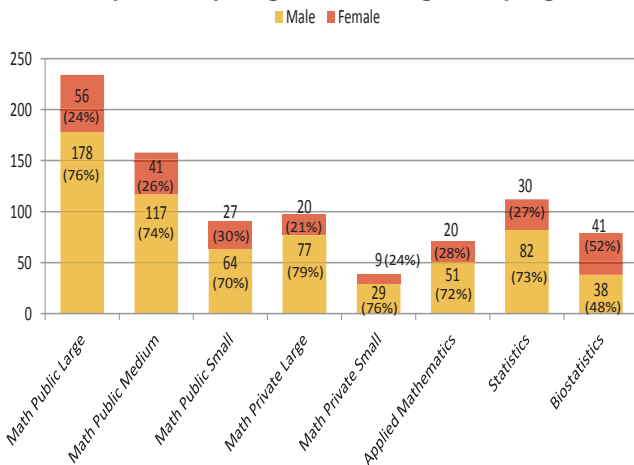
**Figure D.2: Citizenship of Doctoral Recipients by Degree-Granting Grouping**



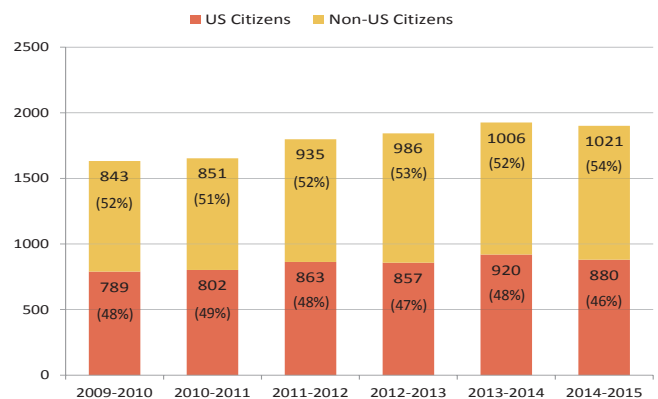
- Females account for 31% (591) of 1,901 PhDs, down from 32% last year.

- 56% of all the PhDs awarded by the Math Public Large group were to US citizens, while only 33% of the PhDs awarded by the Statistics group were to US citizens.
- All groups except Math Public Large, Math Public Medium and Statistics awarded more PhDs to Non-US citizens than US citizens.

**Figure D.3: Gender of US Citizen Doctoral Recipients by Degree-Granting Grouping**



**Figure D.4: Citizenship of New PhD Recipients, 2009-14**



- 49% of the males and 41% of the females are US citizens.
- Females accounted for 28% of the US citizens.
- Among the US citizens: 4 are American Indian or Alaska Native, 65 are Asian, 20 are Black or African American, 26 are Hispanic or Latino, 6 are Native Hawaiian or Other Pacific Islander, 740 are White, and 19 are of unknown race/ethnicity.
- Math Public Large awarded the highest number (19) of PhDs to US citizen minorities, while Math Public Small awarded the smallest number (2), followed by Math Private Large with 3.

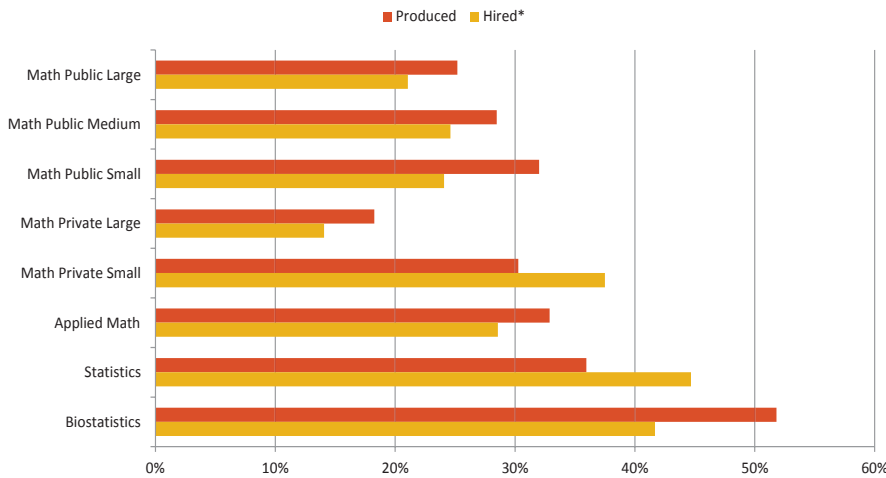
Looking at the last six years we see that:

- The proportion of PhDs awarded to US citizens is at a six-year low, 46% (880). While this is a 4% decrease from last year, it is a 12% increase from fall 2009-10.
- Non-US citizen counts continue to increase reaching a six-year high of 1,021. While this is a 21% increase from fall 2009-10, it represents a 1% increase from last year.

## Female New Doctoral Recipients

After increasing last year to 32%, the proportion of female new doctoral recipients decreased to 31% this year. Of the 864 new PhDs hired into academic positions, 31% (268) were women, down from 32% last year. Twenty-five percent of those hired into postdoc positions were women, with 45% of the women in postdocs being US citizens, up from 43% last year. The US unemployment rate for females is 5.0%, compared to 6.6% for males and 6.1% overall.

**Figure F.1: Females as a Percentage of New Doctoral Recipients Produced by and Hired by Department Grouping**



\* Females as a percentage of total hires by the department grouping.

**Table F.1: Number of Female New Doctoral Recipients Produced by and Hired by Department Groupings**

Department Grouping	Females Produced	Females Hired
Math Public Large	105	24
Math Public Medium	86	16
Math Public Small	64	13
Math Private Large	40	9
Math Private Small	23	9
Applied Math	49	8
Statistics	124	21
Biostatistics	100	15
<b>Total</b>	<b>591</b>	<b>115</b>

- 42% of those hired by the Bachelor's Group were women (down from 44% last year) and 26% of those hired by the Master's Group were women (down from 34% last year).
- 26% of those hired into Research Institutes/Other non-profit positions were women (down from 33% last year).
- 42% of those hired into Government positions were women (up from 34% last year).
- 63% of the women employed in all doctoral groups are in postdoc positions, compared to 75% of males employed in these groups.

**Figure F.2: Females as a Percentage of US Citizen Doctoral Recipients**

