

**TABLE S.1** Enrollment in (1000s) in undergraduate mathematics, statistics, and computer science courses taught in mathematics departments and statistics departments of four-year colleges and universities, and in mathematics programs of two-year colleges. Also NCES data on total fall enrollments in two-year colleges and four-year colleges and universities in fall 1995, 2000, 2005, and 2010. NCES data includes both public and private four-year colleges and universities, and includes only public two-year colleges. Does not include dual enrollments.

|  | Four-Year College & University<br>Mathematics & Statistics Departments |      |      |      |              | Two Year College<br>Mathematics Programs <sup>4</sup> |                 |                 |                 |      |
|--|--|------|------|------|--------------|---|-----------------|-----------------|-----------------|------|
|  | Fall   |      |      |      | 2010 by Dept |   | Fall            |                 |                 |      |
|  | 1995   | 2000 | 2005 | 2010 | Math         | Stat  | 1995            | 2000            | 2005            | 2010 |
| Mathematics  | 1471 <sup>1</sup>  | 1614 | 1607 |      |              |   | 1384            | 1273            | 1580            | 1879 |
| Statistics   | 208  | 245  | 260  |      |              |   | 72              | 74              | 117             | 137  |
| Computer Science   | 100  | 124  | 59   |      |              |   | 43 <sup>2</sup> | 39 <sup>2</sup> | -- <sup>2</sup> |      |
| Total  | 1779   | 1984 | 1925 |      |              |   | 1498            | 1386            | 1697            | 2016 |
| NCES Total Fall<br>Undergraduate<br>Enrollments <sup>3</sup> | 6739   | 7207 | 8476 | 9613 |              |   | 5278            | 5697            | 6184            | 6870 |

<sup>1</sup> These totals include approximately 2000 mathematics enrollments taught in statistics departments.

<sup>2</sup> Computer science totals in two-year colleges before 1995 included estimates of computer science courses taught outside of the mathematics program. In 1995 and 2000, only those computer science courses taught in the mathematics program were included. Starting in 2005, no computer science courses were included in the two-year mathematics survey.

<sup>3</sup> Data for 1995, 2000, and 2005, and projections for 2010, are derived from Tables 24, 26, and 27 of the NCES publication "*Projections of Educational Statistics to 2019*" at <http://nces.ed.gov/programs/projections/projections2019/tables.asp>.

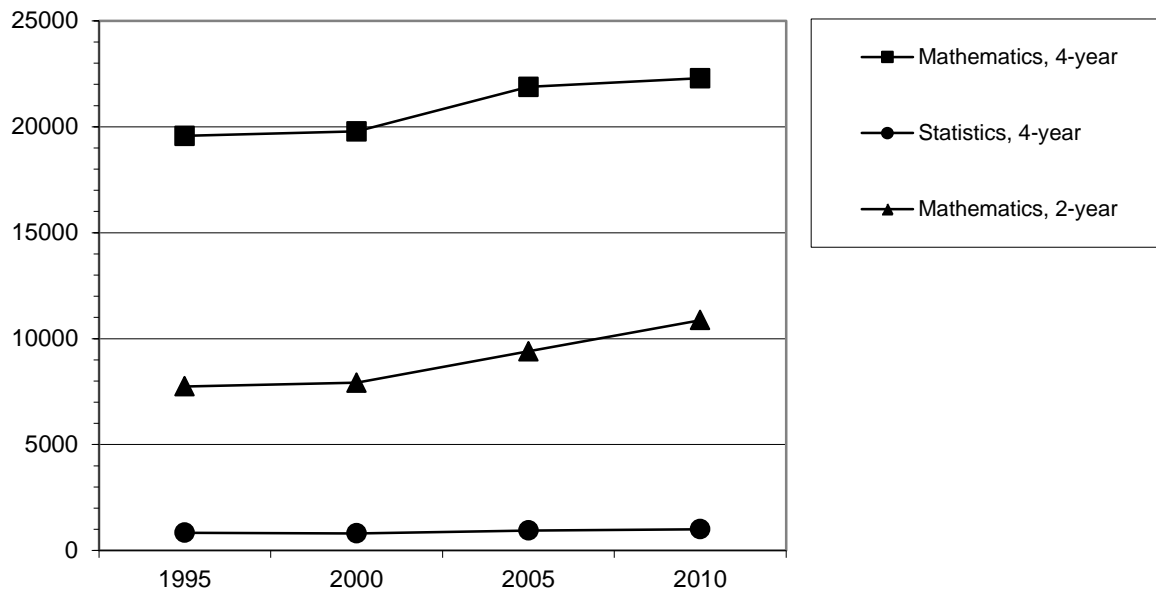
<sup>4</sup> Starting in 2005, data on mathematics, statistics, and computer science enrollments in two-year colleges include only public two-year colleges.

**TABLE S.14** Number of full-time and part-time faculty in mathematics departments at four-year colleges and universities, in doctoral statistics departments at universities, and in mathematics programs at two-year colleges in fall 1995, 2000, 2005, and 2010. (Two-year college data for 2005 and 2010 include only public two-year colleges.)

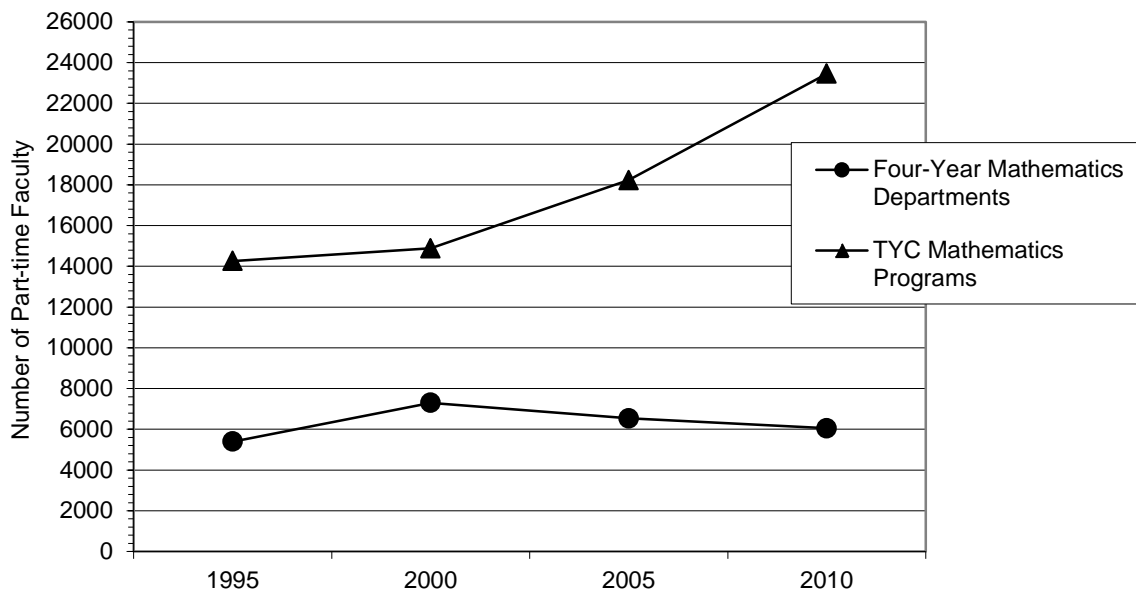
|  | 1995  | 2000  | 2005  | 2010  |
|--|-------|-------|-------|-------|
| <b>Four-Year Colleges &amp; Universities</b> |       |       |       |       |
| <b>Mathematics Departments</b>               |       |       |       |       |
| Full-time faculty                            | 19572 | 19779 | 21885 | 22293 |
| Part-time faculty                            | 5399  | 7301  | 6536  | 6050  |
| <b>Statistics Departments (PhD)</b>          |       |       |       |       |
| Full-time faculty                            | 840   | 808   | 946   | 1004  |
| Part-time faculty                            | 125   | 102   | 112   | 105   |
| <b>Two-Year College Mathematics Programs</b> |       |       |       |       |
| Full-time faculty                            | 7742  | 7921  | 9403  | 10873 |
| Part-time faculty <sup>1</sup>               | 14266 | 14887 | 18227 | 23453 |

<sup>1</sup> Paid by two-year colleges. In fall 2000, there were an additional 776 part-time faculty in two-year colleges who were paid by a third party (e.g. by a school district, in a dual-enrollment course), in 2005 the number paid by a third party was 1915, and in 2010 the number paid by a third party was 2323.

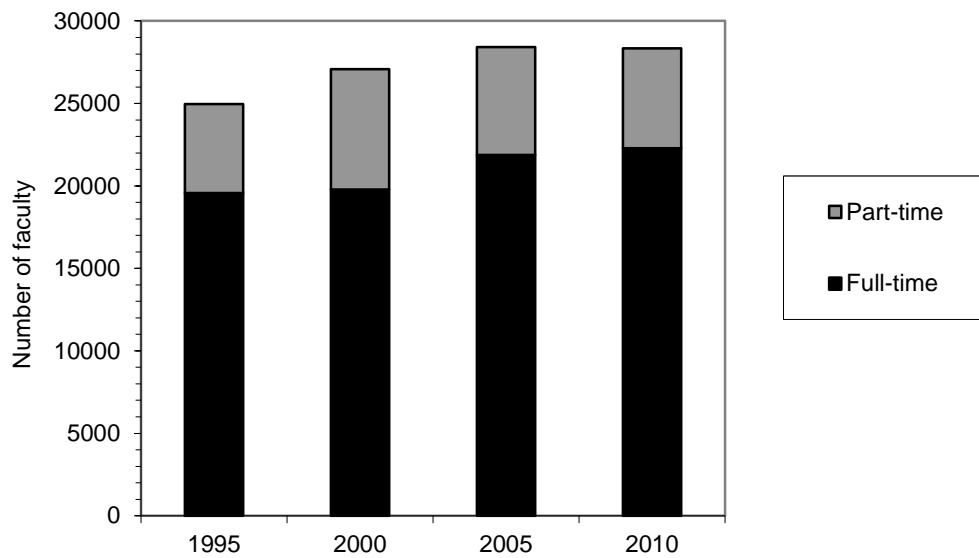
Note on data sources: Data on four-year mathematics and statistics departments in Table S.14 are taken from reports of the AMS's Annual Survey of the Mathematical Sciences, co-sponsored by AMS/ASA/IMS/MAA/SIAM and published each year in the *Notices of the American Mathematical Society*. Combined data for statistics and biostatistics departments with Ph.D. programs are reported as Group IV data in those reports, and the figures reported in Table S.14 for statistics departments were obtained by removing all departments that do not have undergraduate programs from the Group IV totals.



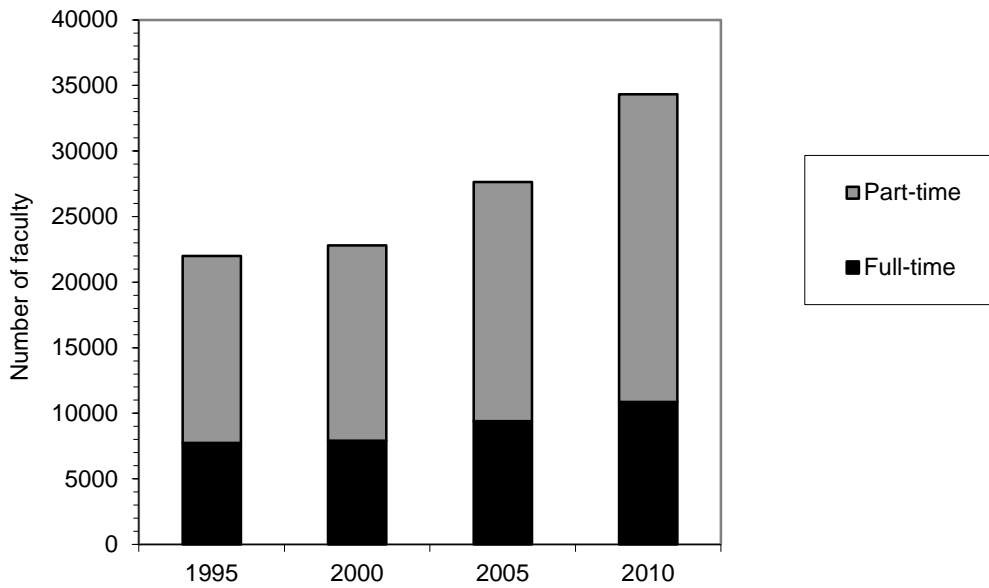
**FIGURE S.14.1** Number of full-time faculty in mathematics departments of four-year colleges and universities, in doctoral statistics departments, and in mathematics programs at two-year colleges in fall 1995, 2000, 2005, and 2010.



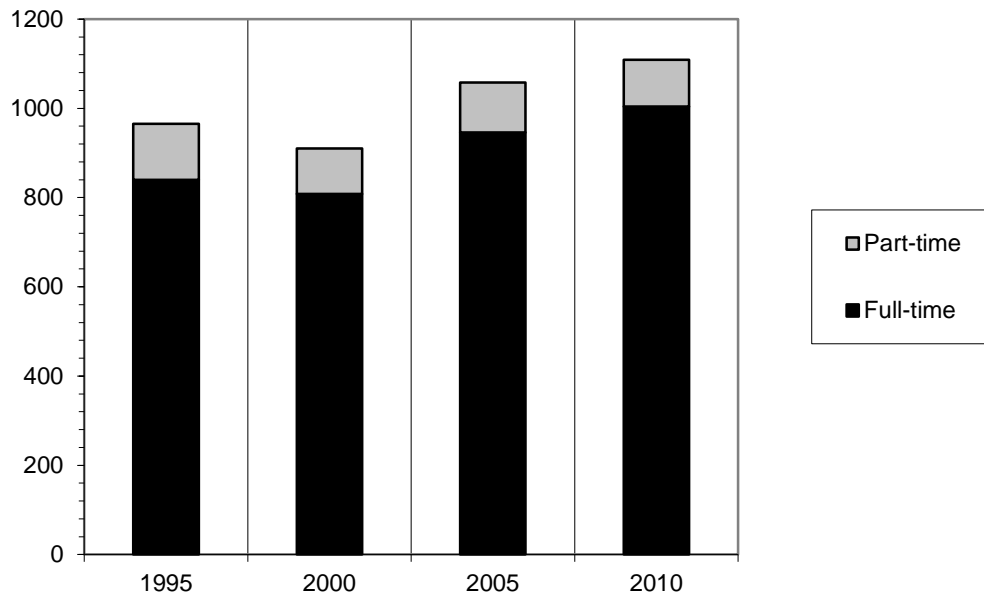
**FIGURE S.14.2** Number of part-time faculty in mathematics departments at four-year colleges and universities and in mathematics programs at two-year colleges (TYCs) in fall 1995, 2000, 2005, and 2010.



**FIGURE S.14.3** Number of full-time and part-time faculty in mathematics departments of four-year colleges and universities in fall 1995, 2000, 2005, and 2010.



**FIGURE S.14.4** Number of full-time and part-time faculty in mathematics programs at two-year colleges in fall 1995, 2000, 2005, and 2010.



**FIGURE S.14.5** Number of full-time and part-time faculty in doctoral statistics departments in fall 2000, 2005, and 2010.

**TABLE S.15** Number of full-time faculty who are tenured and tenure-eligible (TTE), postdocs, and other full-time (OFT) in mathematics and doctoral statistics departments of four-year colleges and universities, and in mathematics programs at two-year colleges, in fall 2005 and fall 2010. (Postdocs are included in the other full-time category.)

| Four-Year Colleges and Universities     | Fall 2005               |                     |                     |            | Fall 2010               |                     |                     |             |
|---|-------------------------|---------------------|---------------------|------------|-------------------------|---------------------|---------------------|-------------|
|   | Total                   | TTE                 | Other full-time     | Postdoc    | Total                   | TTE                 | Other full-time     | Postdoc     |
| <b>Mathematics Departments</b>          |                         |                     |                     |            |                         |                     |                     |             |
| <b>Full-time faculty</b>                | <b>21885</b>            | <b>17256</b>        | <b>4629</b>         | <b>819</b> | <b>22293</b>            | <b>16364</b>        | <b>5929</b>         | <b>1025</b> |
| Having doctoral degree                  | 18071                   | 15906               | 2165                | 813        | 18249                   | 15646               | 2603                | 1024        |
| Having other degree                     | 3814                    | 1350                | 2464                | 6          | 4044                    | 717                 | 3326                | 1           |
| <b>Doctoral Statistics Departments</b>  |                         |                     |                     |            |                         |                     |                     |             |
| <b>Full-time faculty</b>                | <b>946</b>              | <b>783</b>          | <b>163</b>          | <b>51</b>  | <b>1004</b>             | <b>789</b>          | <b>215</b>          | <b>71</b>   |
| Having doctoral degree                  | 915                     | 781                 | 133                 | 51         | 969                     | 786                 | 184                 | 71          |
| Having other degree                     | 31                      | 2                   | 30                  | 0          | 35                      | 3                   | 31                  | 0           |
| <b>Total Math &amp; Doc. Stat Depts</b> | <b>22831</b>            | <b>18039</b>        | <b>4792</b>         | <b>870</b> | <b>23297</b>            | <b>17153</b>        | <b>6144</b>         | <b>1096</b> |
| <b>Two-Year College Mathematics</b>     | Total full-time faculty | Full-time permanent | Full-time temporary |            | Total full-time faculty | Full-time permanent | Full-time temporary |             |
| <b>Full-time faculty</b>                | <b>9403</b>             | <b>8793</b>         | <b>610</b>          |            | <b>10873</b>            | <b>9790</b>         | <b>1083</b>         |             |
| <b>Grand Total</b>                      | <b>32234</b>            | <b>26832</b>        | <b>5402</b>         | <b>870</b> | <b>34170</b>            | <b>26943</b>        | <b>7227</b>         | <b>1096</b> |

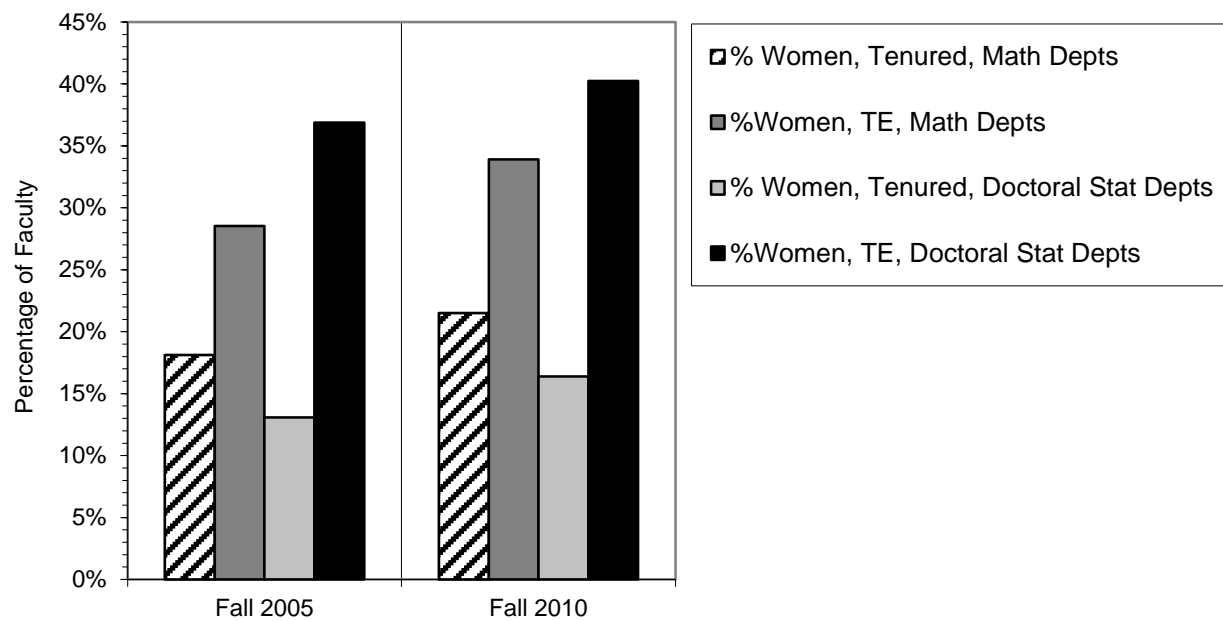
Note: Round-off may make marginal totals seem inaccurate.

**TABLE S.17** Gender among full-time faculty in mathematics and doctoral statistics departments of four-year colleges and universities by type of appointment, and among permanent full-time faculty in mathematics programs at two-year colleges in fall 2005 and fall 2010. Also gender among doctoral and masters degree recipients. (Postdocs are included in the other full-time category.)

| Four-Year Colleges and Universities   | Fall 2005       |                    |                 |                 |                              | Fall 2010       |                    |                 |                 |              |  |  |  |  |
|---|-----------------|--------------------|-----------------|-----------------|------------------------------|-----------------|--------------------|-----------------|-----------------|--------------|--|--|--|--|
|   | Total           | Tenured            | Tenure-eligible | Other full-time | Postdoc                      | Total           | Tenured            | Tenure-eligible | Other full-time | Postdoc      |  |  |  |  |
| <b>Mathematics Departments</b>  |                 |                    |                 |                 |                              |                 |                    |                 |                 |              |  |  |  |  |
| Full-time faculty   | 21885           | 12874              | 4382            | 4629            | 819                          | 22292.9         | 12747.3            | 3616.6          | 5929.1          | 1025.1       |  |  |  |  |
| Number of women   | 5641<br>(26%)   | 2332<br>(18%)      | 1250<br>(29%)   | 2059<br>(44%)   | 191<br>(23%)                 | 6415.7<br>29%   | 2740.4<br>21%      | 1226.6<br>34%   | 2448.6<br>41%   | 233.3<br>23% |  |  |  |  |
| <b>Doctoral Statistics Departments</b>  |                 |                    |                 |                 |                              |                 |                    |                 |                 |              |  |  |  |  |
| Full-time faculty   | 946             | 604                | 179             | 163             | 51                           | 1004.1          | 579.7              | 209.3           | 215.1           | 71.0         |  |  |  |  |
| Number of women   | 211<br>(22%)    | 79<br>(13%)        | 66<br>(37%)     | 66<br>(40%)     | 16<br>(31%)                  | 261.2<br>26%    | 95.1<br>16%        | 84.2<br>40%     | 81.9<br>38%     | 17.7<br>25%  |  |  |  |  |
| July 1, 1980 - June 30, 2010  |                 |                    |                 |                 | July 1, 2005 - June 30, 2010 |                 |                    |                 |                 |              |  |  |  |  |
| Number of PhD's from US Math & Stat Depts <sup>1</sup>                                    |                 |                    |                 |                 | 32278                        |                 |                    |                 |                 | 7259         |  |  |  |  |
| Number of women among new PhDs <sup>1</sup>   |                 |                    |                 |                 | 8051 (25%)                   |                 |                    |                 |                 | 2349 (32%)   |  |  |  |  |
| <b>Two-Year College Mathematics Programs</b>  | Total full-time | Full-time age < 40 |                 |                 |                              | Total full-time | Full-time age < 40 |                 |                 |              |  |  |  |  |
| Full-time faculty   | 8793            | 2326               | (2231?)         |                 |                              | 0               | 0                  |                 |                 |              |  |  |  |  |
| Number of women   | 4373<br>(50%)   | 1148<br>(49%)      |                 |                 |                              | 0<br>(0%)       | 0<br>(0%)          |                 |                 |              |  |  |  |  |
| Masters degrees in mathematics and statistics granted in the U.S. in 2008-09 <sup>2</sup> |                 |                    |                 |                 |                              | 5211            |                    |                 |                 |              |  |  |  |  |
| Number of women among new masters recipients <sup>2</sup>                                 |                 |                    |                 |                 |                              | 2147 (41%)      |                    |                 |                 |              |  |  |  |  |

<sup>1</sup> Reports of the Annual Survey of the Mathematical Sciences, *Notices of the AMS*, 1980-2011. Available at <http://www.ams.org/profession/data/annual-survey/annual-survey>

<sup>2</sup> 2010 Digest of Educational Statistics, NCES, Table 300, available at [http://nces.ed.gov/programs/digest/d10/tables/dt10\\_300.asp](http://nces.ed.gov/programs/digest/d10/tables/dt10_300.asp)



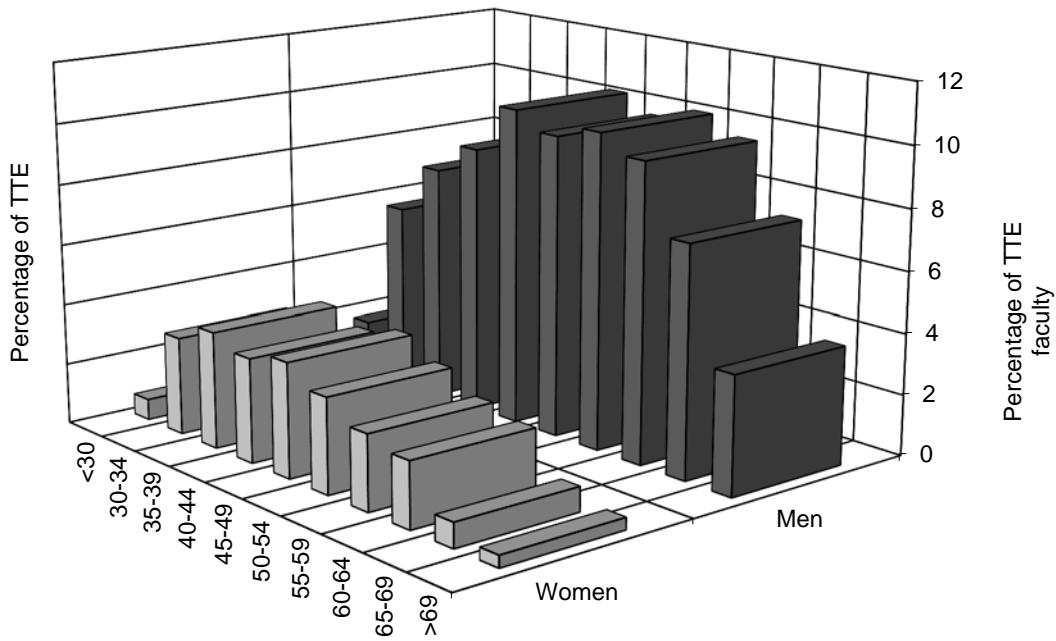
**FIGURE S.17.1** Percentage of women in tenured and tenure-eligible(TE) categories in mathematics departments of four-year colleges and universities and doctoral statistics departments, in fall 2005 and 2010.



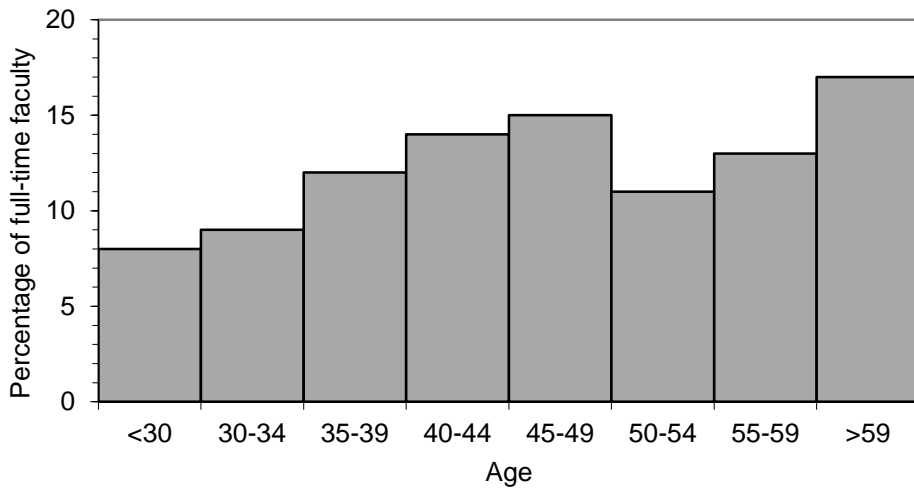
**TABLE S.18** Percentage of all tenured and tenure-eligible faculty in mathematics departments of four-year colleges and universities in various age groups, and average age, by gender in fall 2010. Percentage full-time permanent faculty in mathematics programs at public two-year colleges, by age, and average ages in fall 2010. Also, historical data from fall 2005.

| Four-Year College & University Mathematics Departments | Percentage of tenured/tenure-eligible faculty |          |           |           |           |           |           |           |          |          | Average age 2005 | Average age 2010 |
|--|---|----------|-----------|-----------|-----------|-----------|-----------|-----------|----------|----------|------------------|------------------|
|  | <30   | 30-34    | 35-39     | 40-44     | 45-49     | 50-54     | 55-59     | 60-64     | 65-69    | >69      |                  |                  |
| Tenured men  | 0   | 1        | 4         | 7         | 9         | 10        | 10        | 10        | 7        | 4        | 53.7             | 54.6             |
| Tenured women  | 0   | 0        | 2         | 3         | 3         | 3         | 2         | 2         | 1        | 0        | 50.2             | 50.7             |
| Tenure-eligible men                                    | 2   | 5        | 4         | 2         | 1         | 0         | 0         | 0         | 0        | 0        | 38.9             | 36.9             |
| Tenure-eligible women                                  | 1   | 3        | 2         | 1         | 1         | 0         | 0         | 0         | 0        | 0        | 38.6             | 37.8             |
| <b>Total tenured &amp; tenure-eligible faculty</b>     | <b>2</b>                                      | <b>9</b> | <b>12</b> | <b>12</b> | <b>14</b> | <b>13</b> | <b>13</b> | <b>12</b> | <b>8</b> | <b>4</b> |                  |                  |
|  | Percentage of permanent full-time faculty     |          |           |           |           |           |           |           |          |          |                  |                  |
| Two-Year College Mathematics Program                   | <30   | 30-34    | 35-39     | 40-44     | 45-49     | 50-54     | 55-59     | >59       |          |          |                  |                  |
| Full-time permanent faculty                            | 8   | 9        | 12        | 14        | 15        | 11        | 13        | 17        |          |          | 47.8             | compute          |

Note: 0 means less than half of 1%. Round off may cause some marginal totals to appear inaccurate.



**FIGURE S.18.1** Percentage of all tenured and tenure-eligible (TTE) faculty in mathematics departments at four-year colleges and universities belonging to various age groups, by gender, in fall 2010.



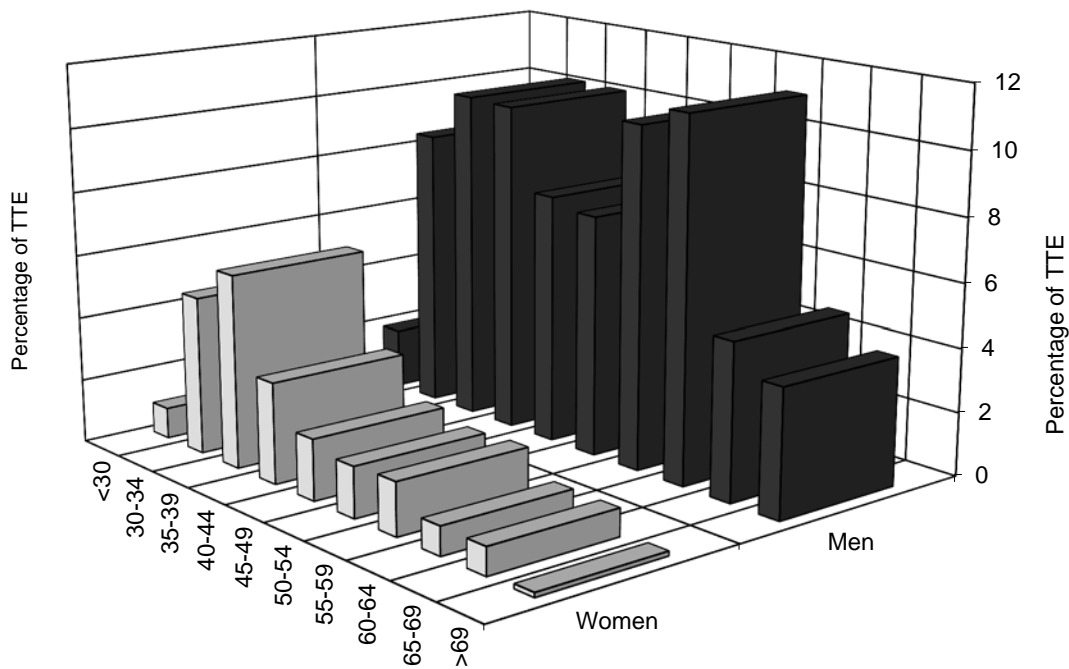
**FIGURE S.18.2** Percentage of permanent full-time faculty in various age groups in mathematics programs at public two-year colleges in fall 2010.

**TABLE S.19** Percentage of tenured and tenure-eligible faculty belonging to various age groups in doctoral and masters statistics departments (combined) at universities by gender, and average ages in fall 2010. Also average ages for doctoral statistics departments in fall 2005.

| All Statistics Departments                         | Percentage of tenured/tenure-eligible faculty |           |           |           |           |          |           |           |          |          | Average age 2005 <sup>1</sup> | Average age 2010 |
|--|---|-----------|-----------|-----------|-----------|----------|-----------|-----------|----------|----------|-------------------------------|------------------|
|  | <30   | 30-34     | 35-39     | 40-44     | 45-49     | 50-54    | 55-59     | 60-64     | 65-69    | >69      |                               |                  |
| Tenured men  | 0   | 1         | 5         | 9         | 8         | 7        | 11        | 11        | 5        | 4        | 52.7                          | 53.8             |
| Tenured women                                      | 0   | 1         | 2         | 2         | 2         | 2        | 2         | 1         | 1        | 0        | 45.6                          | 48.4             |
| Tenure-eligible men                                | 2   | 8         | 5         | 1         | 0         | 0        | 0         | 0         | 0        | 0        | 33.7                          | 34.8             |
| Tenure-eligible women                              | 1   | 4         | 4         | 1         | 0         | 0        | 0         | 0         | 0        | 0        | 33.2                          | 35.6             |
| <b>Total tenured &amp; tenure-eligible faculty</b> | <b>3</b>                                      | <b>14</b> | <b>16</b> | <b>14</b> | <b>10</b> | <b>9</b> | <b>12</b> | <b>12</b> | <b>6</b> | <b>4</b> |                               |                  |

Note: 0 means less than half of 1%. Round off may cause some marginal totals to appear inaccurate.

<sup>1</sup>Average ages for fall 2005 from CBMS2005 Table S.19.



**FIGURE S.19.1** Percentage of tenured and tenure-eligible faculty in various age groups, by gender, in doctoral and masters statistics departments (combined) in fall 2010.

**TABLE S.20** Percentage of gender and of racial/ethnic groups among all tenured, tenure-eligible, postdoctoral, and other full-time faculty in mathematics departments of four-year colleges and universities in fall 2010.

| Mathematics Departments            | Asian | Black, not Hispanic | Mexican American/<br>Puerto Rican/<br>other<br>Hispanic | White, not Hispanic | Other/<br>Unknown <sup>1</sup> |
|------------------------------------|-------|---------------------|---|---------------------|--------------------------------|
|                                    | %     | %                   | %   | %                   | %                              |
| Tenured Men                        | 6     | 1                   | 1   | 36                  | 1                              |
| Tenured Women                      | 1     | 0                   | 0   | 10                  | 0                              |
| Tenure-eligible men                | 2     | 0                   | 0   | 7                   | 0                              |
| Tenure-eligible women              | 1     | 0                   | 0   | 4                   | 0                              |
| Postdoctoral men                   | 1     | 0                   | 0   | 2                   | 0                              |
| Postdoctoral women                 | 0     | 0                   | 0   | 1                   | 0                              |
| Full-time men not included above   | 1     | 1                   | 0   | 10                  | 1                              |
| Full-time women not included above | 1     | 0                   | 0   | 9                   | 1                              |
| Total full-time men                | 9     | 2                   | 2   | 56                  | 2                              |
| Total full-time women              | 3     | 1                   | 1   | 23                  | 1                              |

<sup>1</sup> The column "Other/Unknown" includes the federal categories Native American/Alaskan Native and Native Hawaiian/Other Pacific Islander.

Note: 0 means less than half of 1% and this may cause apparent column sum inconsistencies.

**TABLE S.21** Percentage of gender and of racial/ethnic groups among all tenured, tenure-eligible, postdoctoral, and other full-time faculty in doctoral and masters statistics departments (combined) at universities in fall 2010.

| All Statistics Departments         | Asian | Black, not<br>Hispanic | Mexican<br>American/<br>Puerto Rican/<br>other<br>Hispanic | White, not<br>Hispanic | Other/<br>Unknown <sup>1</sup> |
|------------------------------------|-------|------------------------|--|------------------------|--------------------------------|
|                                    | %     | %                      | %  | %                      | %                              |
| Tenured Men                        | 11.2  | 0.2                    | 0.6  | 34.1                   | 2.0                            |
| Tenured Women                      | 2.4   | 0.0                    | 0.1  | 5.9                    | 0.7                            |
| Tenure-eligible men                | 5.5   | 0.5                    | 0.2  | 5.9                    | 0.8                            |
| Tenure-eligible women              | 4.8   | 0.0                    | 0.1  | 3.3                    | 0.4                            |
| Postdoctoral men                   | 2.7   | 0.0                    | 0.4  | 2.5                    | 0.0                            |
| Postdoctoral women                 | 0.5   | 0.1                    | 0.1  | 1.0                    | 0.1                            |
| Full-time men not included above   | 0.8   | 0.1                    | 0.1  | 6.2                    | 0.0                            |
| Full-time women not included above | 0.7   | 0.1                    | 0.2  | 5.1                    | 0.5                            |
| Total full-time men                | 20.1  | 0.8                    | 1.3  | 48.8                   | 2.8                            |
| Total full-time women              | 8.4   | 0.2                    | 0.5  | 15.4                   | 1.7                            |

<sup>1</sup> The column "Other/Unknown" includes the federal categories Native American/Alaskan Native and Native Hawaiian/Other Pacific Islander.

Note: 0 means less than half of 1%; round off causes apparent column sum inconsistencies.

**TABLE S.22** Number of deaths and retirements of full-time faculty from mathematics departments and from doctoral statistics departments by type of school. Numbers reported prior to 2004-2005 for mathematics departments are of Tenured and Tenure-track faculty. (Data prior to 2004-2005 for statistics departments includes both masters and doctoral statistics departments.)

| <b>Four-Year College &amp; University</b>                                | 1994-1995 | 1999-2000 | 2004-2005 | 2009-2010 | Number of tenured/ tenure-eligible faculty 2010 |
|--|-----------|-----------|-----------|-----------|---|
| <b>Mathematics Departments</b>   |           |           |           |           |   |
| Univ(PhD)  | 172       | 174       | 139       | 146       | 5615  |
| Univ(MA)   | 132       | 165       | 140       | 91        | 3209  |
| Coll(BA)   | 137       | 123       | 219       | 123       | 7540  |
| <b>Total deaths and retirements in all Mathematics Departments</b>       | 441       | 462       | 499       | 360       | 16364   |
| <b>Doctoral Statistics Departments:<br/>Total deaths and retirements</b> | 33        | 16        | 14        | 15        | 789   |