

BULLETIN
OF THE
AMERICAN MATHEMATICAL SOCIETY

EDITED BY

ABRAHAM ADRIAN ALBERT

TOMLINSON FORT

LAWRENCE MURRAY GRAVES

PAUL ALTHAUS SMITH

WITH THE ASSISTANCE OF

H. T. DAVIS

G. A. HEDLUND

J. R. KLINE

H. W. KUHN

VIRGIL SNYDER

VOLUME 45, NUMBER 2
FEBRUARY, 1939

PUBLISHED BY THE SOCIETY
MENASHA, WIS., AND NEW YORK

**PERIODICAL PUBLICATIONS
OF THE
AMERICAN MATHEMATICAL SOCIETY**

**BULLETIN OF THE
AMERICAN MATHEMATICAL SOCIETY**

This journal is published monthly. It is the official organ of the Society. One of its functions is to report official acts of the Society and the details of its meetings, with abstracts of all research papers presented. In addition to these official reports, it publishes also short original papers on mathematical topics, and some of the longer officially invited addresses presented before the Society. These papers form the body of the Bulletin. It contains also announcements and notes on matters of current interest, and reviews of advanced mathematical books.

Price per annual volume, \$9.00. Sets of early volumes are available as follows: vols. 1-36 (1894-1930), \$7.00 each; vols. 37 to date, \$9.00 each. Those numbers of vols. 1-11 which were out of print and scarce have now been reprinted, and complete sets can be obtained through the Society's New York office.

**TRANSACTIONS OF THE
AMERICAN MATHEMATICAL SOCIETY**

This journal is devoted to research in pure and applied mathematics.

Beginning with 1935, two volumes of three numbers each of the Transactions have been published per year. The price per volume is \$6.00, so that the annual subscription price (six issues) is \$12.00. The Transactions appeared as a quarterly from 1900 to 1934, inclusive, with the exception of the year 1922, when two volumes, of four numbers each, were published (vols. 23-24).

Sets of early volumes are available as follows: vols. 1-21 (1900-1920), \$7.00 each; vols. 22-32 (1921-1930), \$8.00 each; vols. 33-36 (1931-1934), \$9.00 each.

Subscriptions and orders for the Bulletin or Transactions should be addressed to the American Mathematical Society, Menasha, Wis., or Low Memorial Library, 531 West 116th St., New York, N. Y.

Entered as second class matter April 24, 1926 at the post office at Menasha, Wis., under the act of August 24, 1912. Acceptance for mailing at the special rate of postage provided for in the act of February 28, 1925, embodied in paragraph 4, section 528, P. L. and R., authorized May 9, 1935.

APPENDIX C

TEXT OF THE TESTIMONIAL PRESENTED TO
PROFESSOR T. S. FISKE

**THE AMERICAN
MATHEMATICAL SOCIETY**


on its

FIFTIETH ANNIVERSARY
greet^s with particular affection
and esteem the man in whose mind
its organization first took shape

Thomas Scott Fiske

Various members of the Society have shared its purposes, problems, and achievements from its earliest days to the present, none more vitally than he. As Secretary, Editor, and President, as well as in other offices of responsibility, he has supplemented initiative with long-continued service and devotion.

A half century is a common measure of man's personal



experience and of the history of the race. It is not too long to be compassed by the life of an individual; it is not too short to be significant in the life of an institution. In fifty years the American Mathematical Society has witnessed and in no small measure helped to bring about an unprecedented extension of mathematical research, which seems destined in its own sphere to mark this as one of the great ages in the growth of human understanding. The Society would like to believe that its Founder may be justly proud of its accomplishments, as it takes pride in his and addresses to him this testimony of grateful regard as with him it sets its face toward the future

For the Council, by order of the Society

R. L. Moore

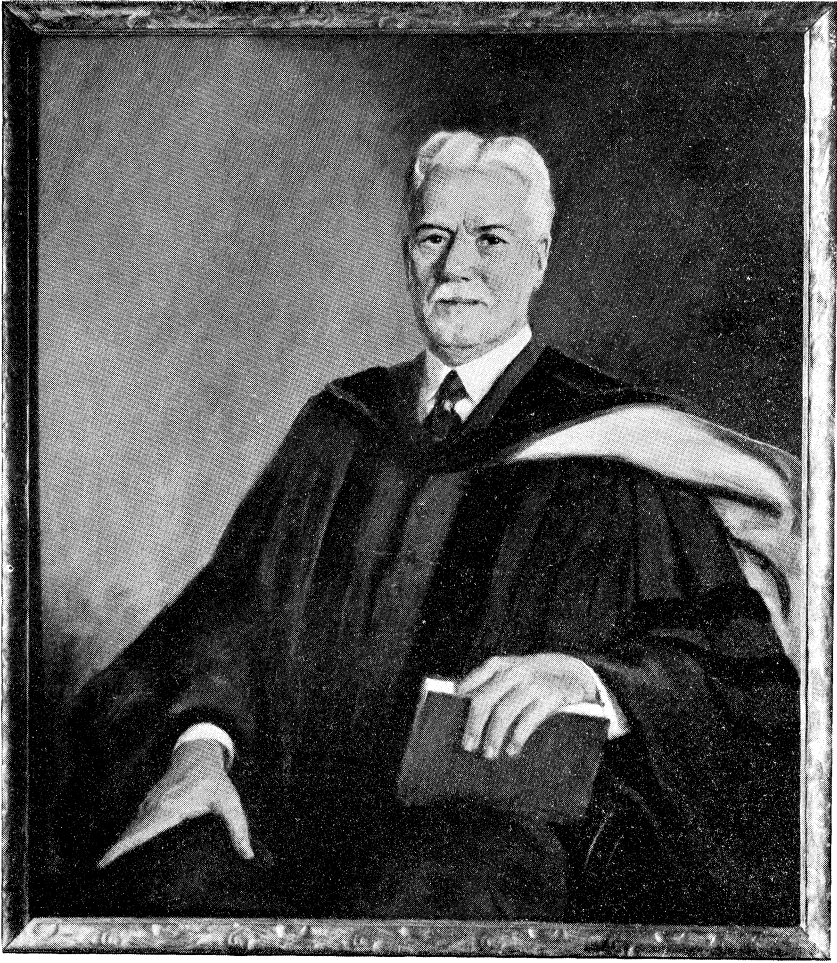
President

W. D. Richardson

Secretary

September 7, 1938

APPENDIX D



PHOTOGRAPH OF PORTRAIT OF PROFESSOR T. S. FISKE



PHOTOGRAPH OF BAS-RELIEF OF
PROFESSOR T. S. FISKE