

mathematicians, PHYSICISTS, ENGINEERS, EE, ME

CONDUCT MATHEMATICAL ANALYSES OF REACTOR PROBLEMS INVOLVING

50 INDEPENDENT VARIABLES

The complexity of the mathematical problems involved in the design of a reactor for aircraft nuclear propulsion at General Electric has led mathematicians to develop new techniques in the statistical design of experiments, of interest to both applied scientists and theoreticians. At this time a number of positions are open with groups working on these problems:

APPLY advanced mathematical procedures and approaches in resolving diverse and complex problems in areas of aircraft nuclear power plant design and development. Requires experience in utilization and capability of high speed computers. (PhD, MS)

CONDUCT theoretical investigation of the effect of neutrons and photons on matter. (PhD)

CARRY OUT engineering analysis of physical systems in electro-mechanical areas, deriving equations associated with systems study, developing generalized digital programs for parametric study. (PhD, MS)

ANALYZE and simulate nuclear powerplant control systems, through the use of analog computers. Develop controls systems integration. (MS, BS)

ALSO — EE with 1 year's experience, to assume operating responsibility for data reduction equipment. Develop data reduction techniques, formulate engineering analysis computer programs.

MATHEMATICIANS, ENGINEERS and SCIENTISTS who value the opportunity to do original work with a company that fosters free inquiry and initiative, are invited to inquire about positions now open in the above areas. Please include salary requirements with resume.

Write to Mr. P. W. Christos, Div. 123-ME

AIRCRAFT NUCLEAR PROPULSION DEPARTMENT

GENERAL  ELECTRIC

P.O. Box 132

Cincinnati 15, Ohio

WILEY

BOOKS



INFORMATION THEORY and STATISTICS*

By SOLOMON KULLBACK, *The George Washington University*. Using a general probabilistic setting, the author describes the logarithmic measures of information and their applications to the testing of statistical hypotheses. Provides the foundation for an extension to more complex stochastic processes. 1959. 395 pages. *Illus.* \$12.50.

LECTURES on ORDINARY DIFFERENTIAL EQUATIONS

By the late WITOLD HUREWICZ, *M.I.T.* This study offers a rigorous exposition of the basic material of ordinary differential equations in the real domain. Includes existence theorems, linear systems, and geometric aspects of non-linear systems. A Technology Press book, *M.I.T.* 1958. 122 pages. *Illus.* \$5.00.

An INTRODUCTION to COMBINATORIAL ANALYSIS*

By JOHN RIORDAN, *Bell Telephone Laboratories, Inc.* Discusses the theory of permutations and combinations, with an emphasis on the relation of these results to generating functions; E. T. Bell's set of multivariate polynomials is introduced. Polya's theorem is explained. 1958. 244 pages. *Illus.* \$8.50.

INTRODUCTION to FUNCTIONAL ANALYSIS

By ANGUS E. TAYLOR, *University of California, Los Angeles*. Written by a teacher and researcher of wide experience, this book treats functional analysis in a clear, direct manner. It explains the fundamental ideas and theorems about linear spaces and linear operators, and the abstract-linear-space point of view in surveying the problems of algebra, classical analysis, the theory of integration, and differential and integral equations. 1958. 423 pages. *Illus.* \$12.50.

PRINCIPLES and APPLICATIONS of RANDOM NOISE THEORY

By JULIUS S. BENDAT, *Thompson Ramo Wooldridge Inc., and University of Southern California*. A concise and lucid description of those principles and applications of random noise theory which are known to be of importance in statistical communication theory, systems analysis, automatic control, meteorology, aeronautics, radar, product testing, and many other fields. 1958. 431 pages. *Illus.* \$11.00.

SURVEYS in APPLIED MATHEMATICS

- Vol. I**—Elasticity and Plasticity. By J. N. GOODIER and P. G. HODGE, JR. 1958. 152 pages. *Illus.* \$6.25.
- Vol. II**—Dynamics and Nonlinear Mechanics. By E. LEIMANIS and N. MINORSKY. 1958. 206 pages. *Illus.* \$7.75.
- Vol. III**—Mathematical Aspects of Subsonic and Transonic Gas Dynamics. By L. BERS. 1958. 164 pages. *Illus.* \$7.75.
- Vol. IV**—Some Aspects of Analysis and Probability. By I. KAPLANSKY, E. HEWITT, M. HALL, JR., and R. FORTET. 1958. 243 pages. *Illus.* \$9.00.
- Vol. V**—Numerical Analysis and Partial Differential Equations. By G. E. FORSYTHE and P. C. ROSENBLOOM. 1958. 204 pages. \$7.50.

*One of the Wiley Publications in Statistics, Walter A. Shewhart and S. S. Wilks, Editors.

Send for examination copies.

JOHN WILEY & SONS, Inc.

440 Fourth Avenue, New York 16, N.Y.

MATHEMATICIANS

THE AMHERST LABORATORY



Sylvania's Center for Communications Research and Development

... stresses basic and applied research on mathematical topics related to communications. Broad areas of mathematics being explored in current investigations include:

**FINITE GROUP THEORY
NUMBER THEORY
DIFFERENCE SETS & PROJECTIVE GEOMETRY
STATISTICAL THEORY OF COMMUNICATIONS & NOISE
FOURIER ANALYSIS OF CODED TRANSMISSIONS
COMPUTER APPLICATIONS**

Changing interests

of members of the Mathematics Section are frequently reflected in the topics under study.

Immediate openings:

exist for mathematicians at several levels of training and experience.

Location

of the Amherst Laboratory is in residential Williamsville, northeast of Buffalo.

*Address confidential inquiries to
E. F. Culverhouse*

 **SYLVANIA** 
SYLVANIA ELECTRIC PRODUCTS INC.

1120 Wehrle Drive, Amherst 21, N. Y.

EINAR HILLE of Yale University

ANALYTIC FUNCTION THEORY - VOLUME I

A modern text on function theory. Skillfully written, with a fine balance of text and problems, this book integrates the classical theory of complex analytic functions with modern functional analysis as a whole.

Among many valuable features are biographical notes about mathematicians associated with the development of the theory, and suggestions for collateral reading.

CONTENTS. 1. Number Systems. 2. The Complex Plane. 3. Fractions, Powers, and Roots. 4. Holomorphic Functions. 5. Power Series. 6. Some Elementary Functions. 7. Complex Integration. 8. Representation Theorems. 9. The Calculus of Residues. Appendixes: Some Properties of Point Sets. Some Properties of Polygons. On the Theory of Integration.

Approximately 300 pages. Suitable for one-term or one-year course. To be published in the summer of 1959. Vol. II in preparation.



GINN AND COMPANY announces a new series of texts under the editorship of:

**GARRETT BIRKHOFF
MARK KAC
JOHN G. KEMENY**

INTRODUCTIONS TO HIGHER MATHEMATICS

Brief, expository texts—containing problems—designed to meet the needs of junior, senior, and graduate students in significant areas of mathematics, where such books seem to serve a useful purpose. Professor Hille's book is the first of these publications.

GINN AND COMPANY

Home Office: Boston

New York 11

Chicago 6 · Atlanta 3 · Dallas 1 · Palo Alto · Toronto 16

ENGINEERS

General Electric's Advanced Electronics Center

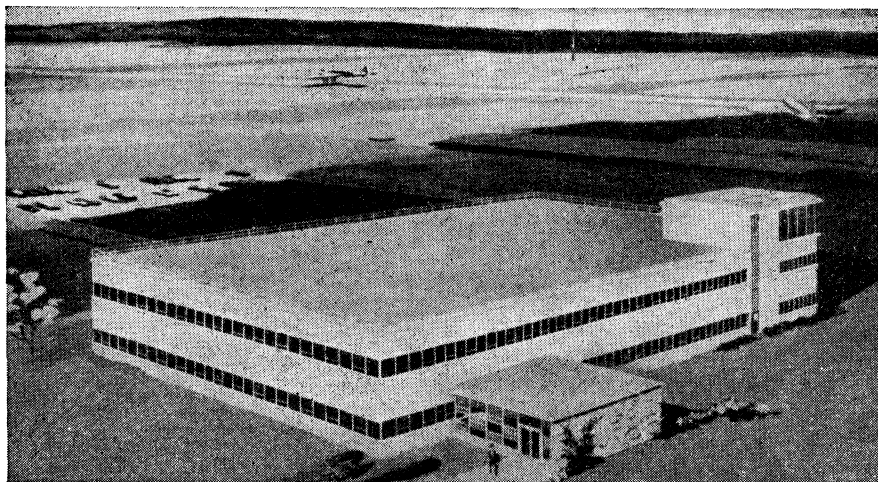
ANNOUNCES

the construction of its new R&D Laboratory at Cornell University's Industrial Research Park

Equipped with most modern laboratory tools available and manned by one of the country's leading research and development teams, this new facility, on the shores of Lake Cayuga in Ithaca, New York, will be dedicated to advancing man's knowledge in areas of electronics that today lie beyond state-of-the-art barriers.

At the present time far-ranging programs in applied research and development work are being pursued in these important areas:

**RADAR • INFRARED • DATA PROCESSING AND
COMMUNICATIONS • HUMAN FACTORS ENGINEERING •
ELECTRONIC COUNTERMEASURES • WEAPONS SYSTEMS •
SATELLITE AND MISSILE ELECTRONICS**



The Advanced Electronics Center's rapid growth (from a small staff of less than a dozen eight years ago to a full complement of 380 today) is indicative of the accelerated career development that may be attained by working for G.E.

If you are a graduate engineer or physicist who has the imagination, training and experience to make major personal contributions to advanced programs in any of the above areas, write in strict confidence to: Mr. James R. Colgin, Advanced Electronics Center at Cornell University, Light Military Electronics Dept., Div. 123-BME.

GENERAL  ELECTRIC

Ithaca, New York



MATHEMATICAL REVIEWS

A Journal Containing Reviews
of the Mathematical Literature
of the World, with full
Subject and Author Indices

Sponsored by

The American Mathematical Society

*The Mathematical Association of
America*

*The Society for Industrial and
Applied Mathematics*

*The Institute of Mathematical
Statistics*

The Edinburgh Mathematical Society

Société Mathématique de France

Dansk Matematisk Forening

*Het Wiskundig Genootschap te
Amsterdam*

The London Mathematical Society

Polskie Towarzystwo Matematyczne

Unión Matemática Argentina

Indian Mathematical Society

Unione Matematica Italiana

Subscriptions accepted to cover
the calendar year only. Issues ap-
pear monthly except July. \$50.00
per year. \$25.00 to individual mem-
bers of sponsoring organizations.
An edition printed on one side, for
bibliographical purposes, is avail-
able at an additional charge of
\$1.00 per year. Unesco Book Cou-
pons may be used in payment.

Send subscription orders to

**AMERICAN MATHEMATICAL
SOCIETY**

**190 Hope Street
Providence 6, R.I.**

On Numerical Approximation

Proceedings of a Symposium Conducted by the Mathematics Research Center, United States Army, at The University of Wisconsin, Madison, April 21-23, 1958.

Edited by **Rudolph E. Langer**

The objective of this symposium was the presentation and discussion of recent developments in the field of numerical approximation. The twenty-one papers are centered around three general themes; *Linear Approximation*, *Extremal Approximation*, and *Algorithms*.

480 pages

\$4.50

The Science of Mechanics in the Middle Ages

By **Marshall Clagett**

This noteworthy contribution to the history of science, which combines a detailed survey of the leading medieval mechanical doctrines with a collection of the basic sources themselves, offers a balanced introduction to the crucial problems of medieval mechanics. As the only summary of three generations' research in the field of medieval mechanics, this volume is invaluable both as a comprehensive introduction to a complex subject and as a convenient work of reference.

768 pages

\$8.00

The University of Wisconsin Press

430 Sterling Court

Madison 6, Wisconsin

Now In Its Second Year . . .

THE PHYSICS OF FLUIDS

EDITOR, F. N. FRENKIEL,

Applied Physics Lab., Johns Hopkins University, Silver Spring, Md.

Devoted to original contributions to the physics of fluids covering kinetic theory, statistical mechanics, structure and general physics of gases, liquids and other fluids and including:

- Magneto-Fluid Dynamics
- Ionized Fluid and Plasma Physics
- Shock and Detonation Wave Phenomena
- Dynamics of Compressible Fluids
- Boundary Layer and Turbulence Phenomena
- Liquid State Physics and Superfluidity
- Hypersonic Physics
- Rarefied Gas Phenomena
- Upper Atmosphere Phenomena
- Physical Aeronomy
- Transport Phenomena
- Hydrodynamics

As well as certain basic aspects of physics of fluids bordering geophysics, astrophysics, biophysics and other fields of science:

Bi-monthly: **Non Members—\$10.00 domestic, \$11.00 foreign**
Members of member societies—\$8.00 domestic, \$9.00 foreign
A.P.S. in lieu—\$4.00 domestic, \$5.00 foreign

Orders and inquiries should be sent to:

American Institute of Physics, 335 East 45 Street, New York 17, N.Y.

COMING SOON

Colloquium Publications
Volume xxiii

**ORTHOGONAL
POLYNOMIALS**

by
GABOR SZEGÖ

With corrections and
new material.

AMERICAN MATHEMATICAL SOCIETY
190 Hope Street
Providence 6, Rhode Island

**ILLINOIS
JOURNAL
OF
MATHEMATICS**

A quarterly journal of basic research in pure
and applied mathematics published by the
University of Illinois, Urbana.

edited by
REINHOLD BAER • J. L. DOOB
A. H. TAUB • GEORGE W. WHITEHEAD
OSCAR ZARISKI

The subscription price is \$9.00 a vol-
ume (four numbers); this is reduced
to \$5.00 for individual members of
the American Mathematical Society.
Subscriptions should be sent to the
University of Illinois Press, Urbana,
Illinois.

MEMOIR 30

**FLAT LORENTZ
3-MANIFOLDS**

by
**L. AUSLANDER and
L. MARKUS**

60 pp. \$2.00

25% discount to members

AMERICAN MATHEMATICAL SOCIETY
190 Hope Street
Providence 6, Rhode Island

MEMOIR 31

**PERIODIC SOLUTIONS
OF**

$$x'' + cx' + g(x) = f(t)$$

by
W. S. LOUD

58 pp. \$2.00

25% discount to members

AMERICAN MATHEMATICAL SOCIETY
190 Hope Street
Providence 6, Rhode Island

Needed

**APPLIED MATHEMATICIAN
OR
MATHEMATICAL PHYSICIST
FOR
RESEARCH IN UNDERWATER ACOUSTICS**

This work offers an opportunity to apply or advance the theory of mechanical vibration or classical wave propagation.

Positions are also being filled in the development of electro-acoustical devices and information processing systems.

I B M 704 computer available.

REQUIREMENTS: Advanced degree or pertinent experience. Ability to do original work with minimum direction. Knowledge of computer programming desirable.

We are a small rapidly expanding company, located in a pleasant suburban town in western Connecticut, 90 miles from New York City.

Attractive salary to match ability.

Write or phone

**THE HARRIS TRANSDUCER CORPORATION
WOODBURY, CONNECTICUT
CONGRESS 3-2116**

MATHEMATICS
& OPERATIONS
RESEARCH AT
SYLVANIA

in Suburban Boston



*Some
current
interests
involve:*

- DATA HANDLING
- COMMUNICATIONS NETWORKS
- GAME THEORY
- COMBAT SURVEILLANCE
- INFORMATION THEORY
- QUEUING THEORY

*Unusual and
interesting
positions are
available for
individuals who
are capable of
independent work.*

*Please send resume
to Erling Mostue*

WALTHAM LABORATORIES
Sylvania Electronic Systems

A Division of



SYLVANIA

SYLVANIA ELECTRIC PRODUCTS INC.

100 First Avenue—
Waltham 54, Massachusetts

Journals Published by the American Mathematical Society

Bulletin of the American Mathematical Society

This journal is the official organ of the Society. It reports official acts of the Society and the details of its meetings. It contains some of the officially invited addresses presented before the Society, reviews of advanced mathematical books, research problems and a department of research announcements.

The subscription price is \$7.00 per annual volume of six numbers.

Research Problems and Invited Addresses offered for publication should be sent to B. J. PÉTTIS, Department of Mathematics, University of North Carolina, Chapel Hill, N. C.; Book reviews to J. C. OXTOBY, Bryn Mawr College, Bryn Mawr, Pa. Research Announcements offered for publication should be sent to some member of the Council of the Society, and communicated by him to E. E. MOISE, Department of Mathematics, University of Michigan, Ann Arbor, Mich. All other communications to the editors should be sent to the Managing Editor, J. C. OXTOBY.

The members of the Council for 1959 are: E. F. Beckenbach, E. G. Begle, R. E. Bellman, Lipman Bers, R. H. Bing, Garrett Birkhoff, R. P. Boas, Salomon Bochner, Richard Brauer, R. H. Bruck, S. S. Chern, J. A. Dieudonné, J. L. Doob, Samuel Eilenberg, P. R. Garabedian, A. M. Gleason, J. W. Green, P. R. Halmos, Edwin Hewitt, Einar Hille, G. P. Hochschild, G. B. Huff, Nathan Jacobson, Irving Kaplansky, D. H. Lehmer, L. H. Loomis, E. J. McShane, W. S. Massey, A. E. Meder, Jr., E. E. Moise, J. C. Oxtoby, B. J. Pettis, R. S. Pierce, Everett Pitcher, G. de B. Robinson, P. C. Rosenbloom, Walter Rudin, Hans Samelson, I. J. Schoenberg, I. E. Segal, N. E. Steenrod, A. W. Tucker, S. M. Ulam, J. W. T. Youngs, Leo Zippin.

Proceedings of the American Mathematical Society

This journal is devoted entirely to research in pure and applied mathematics and is devoted principally to the publication of original papers of moderate length.

The subscription price is \$11.00 per annual volume of six numbers.

Papers in algebra and number theory should be sent to IRVING KAPLANSKY, Eckhart Hall, University of Chicago, Chicago 37, Ill.; in probability, real variables, logic and foundations to P. R. HALMOS, Eckhart Hall, University of Chicago, Chicago 37, Ill.; in abstract analysis to either P. R. HALMOS or IRVING KAPLANSKY; in geometry and topology to HANS SAMELSON, Department of Mathematics, University of Michigan, Ann Arbor, Mich.; in other branches of analysis, applied mathematics, and all other fields to R. P. BOAS, Lunt Building, Northwestern University, Evanston, Ill. All other communications to the editors should be addressed to the Managing Editor, IRVING KAPLANSKY.

Transactions of the American Mathematical Society

This journal is devoted entirely to research in pure and applied mathematics, and includes in general longer papers than the PROCEEDINGS.

Four volumes of three numbers each will be published in 1958. The subscription price is \$8.00 per volume.

Papers in analysis, applied mathematics and probability should be sent to LIPMAN BERS, Institute of Mathematical Sciences, New York University, New York, N. Y.; in topology, and logic and foundations to SAMUEL EILENBERG, Hamilton Hall, Columbia University, New York 27, N. Y.; in algebra and number theory to G. P. HOCHSCHILD, Department of Mathematics, University of California, Berkeley 4, Calif.; in geometry and abstract analysis to I. M. SINGER, Massachusetts Institute of Technology, Cambridge 39, Mass. All other communications to the editors should be addressed to the Managing Editor, SAMUEL EILENBERG.

Mathematical Reviews

This journal contains abstracts and reviews of the current mathematical literature of the world. It is sponsored by thirteen mathematical organizations, located both in the United States and abroad.

MATHEMATICAL REVIEWS is published monthly, excepting July. The subscription price is \$50.00 per annual volume of eleven numbers.

Notices of the American Mathematical Society

This journal announces the programs of the meetings of the Society. It carries the abstracts of all contributed papers presented at the meetings of the Society and publishes news items of interest to mathematical scientists.

The subscription price is \$7.00 per annual volume of 7 numbers. A single copy is \$2.00.

All communications should be addressed to the Editor J. H. CURTISS, 190 Hope Street, Providence 6, R. I. News items and insertions for each issue must be in the hands of the editor on or before the deadline for the abstracts of the papers to be presented in the meetings announced in that issue. These deadlines are published regularly on the inside front cover page.

Some Recent Publications of the Society

| | |
|--|---------|
| L. P. Eisenhart. <i>Non-Riemannian geometry.</i> Published in 1927 and reprinted in 1958, Colloquium Volume 8. | \$ 4.90 |
| R. S. Pierce. <i>Translation lattices.</i> Memoir 32. | \$ 1.70 |
| E. Hille and R. S. Phillips. <i>Functional analysis and semi-groups.</i> An enlarged and completely revised edition of Colloquium Volume 31, of the same title, by Hille. | \$13.80 |
| J. L. Walsh. <i>Interpolation and approximation.</i> An enlarged and extensively revised edition of Colloquium Volume 20. | \$ 7.00 |
| W. H. Gottschalk and G. A. Hedlund. <i>Topological dynamics.</i> Colloquium Volume 36. | \$ 5.10 |
| N. Jacobson. <i>Structure of rings.</i> Colloquium Volume 37. | \$ 7.70 |
| C. Chevalley. <i>Introduction to the theory of algebraic functions of one variable.</i> Mathematical Surveys Volume 6. | \$ 4.00 |
| S. Bergman. <i>The kernel function and conformal mapping.</i> Mathematical Surveys Volume 5. | \$ 4.00 |
| O. F. G. Schilling. <i>The theory of valuations.</i> Mathematical Surveys Volume 4. | \$ 6.00 |
| M. Marden. <i>The geometry of the zeros of a polynomial in a complex domain.</i> Mathematical Surveys Volume 3. | \$ 5.00 |
| Russian Translations. Volume 8. <i>Twelve papers on function theory, probability, and differential equations.</i> | \$ 6.00 |
| Russian Translations. Volume 9. <i>Four papers on group theory.</i> | \$ 5.00 |
| Russian Translations. Volume 10. <i>Thirteen papers on analysis.</i> | \$ 6.60 |
| Russian Translations. Volume 11. <i>Four papers on topology.</i> | \$ 5.90 |

The price to members of the American Mathematical Society is 25% less than list.

A complete catalog of publications will be sent upon request

American Mathematical Society
190 Hope Street, Providence 6, Rhode Island