



State of the AMS

Report of the Executive Director



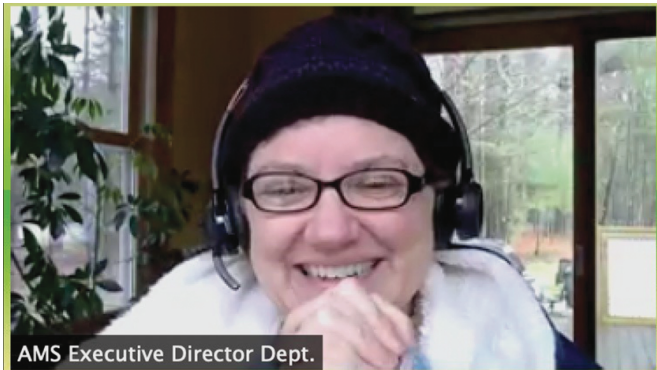
This report will summarize what occurred during the first quarter of 2020 relative to the coronavirus pandemic, and will then report major AMS accomplishments from 2019. The COVID-19 pandemic is impacting our profession and the AMS. I am intensely proud of how our professional society is continuing to advance research and maintain our connections during this challenging time.

Over the course of March 2020, AMS facilities in Washington, DC, Providence, Pawtucket, and Ann Arbor made significant adjustments to our operations in light of the COVID-19 pandemic. This included quickly changing many of our workflows to be paperless. All staff are teleworking, if possible. The printing and distribution facility in Pawtucket, Rhode Island, remains operational with a skeleton crew of two or three people, as of this writing. Furthermore:

- Members of the AMS Board of Trustees are in close consultation with staff and volunteers.
- The AMS Investment Committee meets weekly to monitor and make decisions about our endowment.
- The AMS Business Continuity Team and an ad hoc Emergency Task Force meet weekly to monitor and make decisions about AMS operations.
- The AMS Communications Department maintains a new AMS Resources & Updates page at <https://www.ams.org/home/covid-19>.
- Spring sectional meetings were cancelled, but will return to the same host campuses in the future.
- All spring governance meetings were converted to videoconferences.
- Some deadlines for AMS Programs, such as 2021 Fellows nominations, have been extended.
- AMS authors are being encouraged to provide their banking information for royalty payments, in place of Fiscal staff issuing paper checks.

Courtesy of Marc Studios

Catherine A. Roberts, Executive Director



AMS work must go on, even in a pandemic with no heat in the house.

- The Math Reviews Database continues to be updated, but more slowly.
- Books, journals, and our member journals continue to be produced, but more slowly.
- Availability and sales of MathSciNet®, books, and journals continue.

Several resources (available at <https://www.ams.org/home/covid-19>) are now posted to support the mathematics community, and more are being developed. We hope to provide more resources to early career mathematicians, as well as to come up with some way we can share the research that we would traditionally present at conferences. We are particularly thinking about the emotional and practical support we might provide to students, especially those who are about to select a graduate program or enter the job market. To date:-

- Using a new tool released to help in coronavirus conditions, more than 2,000 people have remotely paired their institution's library to access MathSciNet and other AMS content without having to connect to their network.
- The AMS joined the Copyright Clearance Center Education Continuity License program, providing access to our content for distance learning and other educational uses at no cost to the user.
- AMS books and journal articles addressing relevant mathematical modeling content have been made freely available through our AMS Bookstore.
- Resources to assist faculty in transitioning to on-line teaching are now available.
- A series of videos about the mathematics of COVID-19 are being produced by the AMS and are freely available.
- A portal to media coverage about how mathematical sciences are being applied to understand and help address the coronavirus pandemic is being curated by the AMS.

In addition to scrambling to ensure that as many of our staff as possible can telework and have the tools they need to be successful, we are reaching out to members during

this time. We have to make many decisive choices with no idea how long this pandemic will last. For example, we recently decided not to create the printed version of the May issue of the *Notices of the AMS*, although the full version is available on our website. (Did you know we posted PDFs of past issues back to 1954?) Since we may be unable to issue paper checks to our authors for some time, we are reaching out to collect banking information to accelerate our royalty payments.

What can you do? Continue to monitor <https://www.ams.org/home/covid-19> and follow us on social media to stay up to date and to tap into resources. Maintain your AMS membership. Consider a donation to the AMS; of great value would be donations earmarked for *area of greatest need*. Use and share resources such as MathJobs, MathSciNet, Open Math Notes, and other AMS products. Buy some eBooks. Submit a proposal to organize a special session at a future AMS meeting. There are many ways our members can support their professional society, as we do our best to continue supporting our members.

The spring report to Council traditionally summarizes AMS activities from the prior year. Here are highlights from 2019:

- This was the fourth year of implementation of the 2016–2020 Strategic Plan.
- The Campaign for the Next Generation met its \$3 million goal.
- The AMS printshop converted to new digital presses.
- 91 new books were published and Open Math Notes was enhanced.
- The Math Reviews Database added 128,224 items and 95,767 reviews in 2019.
- The decadal revision of the Mathematics Subject Classification, MSC2020, was completed.
- New, enhanced Journal Profile pages in MathSciNet were released.
- The AMS-Simons travel grants received continued support from the Simons Foundation.
- The NSF funded Mathematics Research Communities again, with a program expansion to include a new focus on research relevant to business, industry, and government.
- The book *Living Proof*, a joint AMS-MAA project, was mailed to approximately 1,500 math departments in the United States, and is available for free download and for print sale.
- The backlog for *Transactions of the AMS* was eliminated with the publication of an extra volume.
- The Communications Department was established.
- The AMS sold a surplus of IPv4 addresses, realizing almost \$1,000,000 in revenue.

- The AMS joined a multi-society Consortium on Sexual Harassment of Women in STEMM.
- Donor engagement and stewardship via the Fiske Society was updated and expanded.
- The Arnold Ross Lecture was held in conjunction with the American Regions Math League.
- The Book Donation Program was discontinued.
- The AMS launched an online series of interviews about careers in business, industry, and government, in partnership with SIAM.
- The AMS Social at JMM 2019 was held at the Maryland Science Center.
- A reception/luncheon was introduced at some sectional meetings by the Membership Department.
- Many upgrades were made to www.ams.org, including progress on accessibility compliance.
- AMS MathViewer was implemented for *Mathematics of Computation*.
- AMS Graduate Student Chapter information is now tied into our database.
- New features to our AMS Member Directory and our donation portal were released.
- New office space in Washington, DC, was leased and built to our specifications for January 2020 occupancy.
- Our accounting software, Serenic Navigator, was updated.
- A new auditing firm was selected to audit financial statements and the employee benefit plan.
- Professional development training for staff, particularly for managers, was enhanced.
- The Grassroots Advocacy Program was launched in the Office of Government Relations.
- The Department of Education was repositioned from Providence to Washington, DC.
- Although print book sales were under budget, eBook revenue continued to grow.
- Several staff retirements across the AMS led to many new hires and some reorganization.

We made a great deal of progress to advance planning for JMM Reimagined, which will begin in 2022 when the MAA will cease to be a managing partner. New activities in 2019 included restoring the undergraduate travel grants for JMM 2020. In 2020, we plan to establish a new committee framework for supporting this conference. We will also release a new set of classification codes for abstracts in order to welcome a wider variety of presentations, and we will establish new partnership agreements with multiple professional organizations.



Courtesy of Scott Turner.

The tree dedicated to Lori Sprague in fall 2019 is blossoming.

I also want to share that a longtime AMS employee, Lori Sprague, passed away in July. She worked in the Providence office for decades, where she was the Director of Sales and Member Services. A lovely tree with a plaque for Lori was dedicated in early fall, with many of her family members joining staff to remember how special she was to our AMS team.

During this unprecedented and uncertain time, I am grateful for the strong sense of community helping to bind us together, even as we are all now physically so far apart. The AMS will remain vigilant in monitoring this evolving situation and will continue to share thoughtful and creative resources for the mathematics community.

Catherine A. Roberts
Executive Director
April 2020