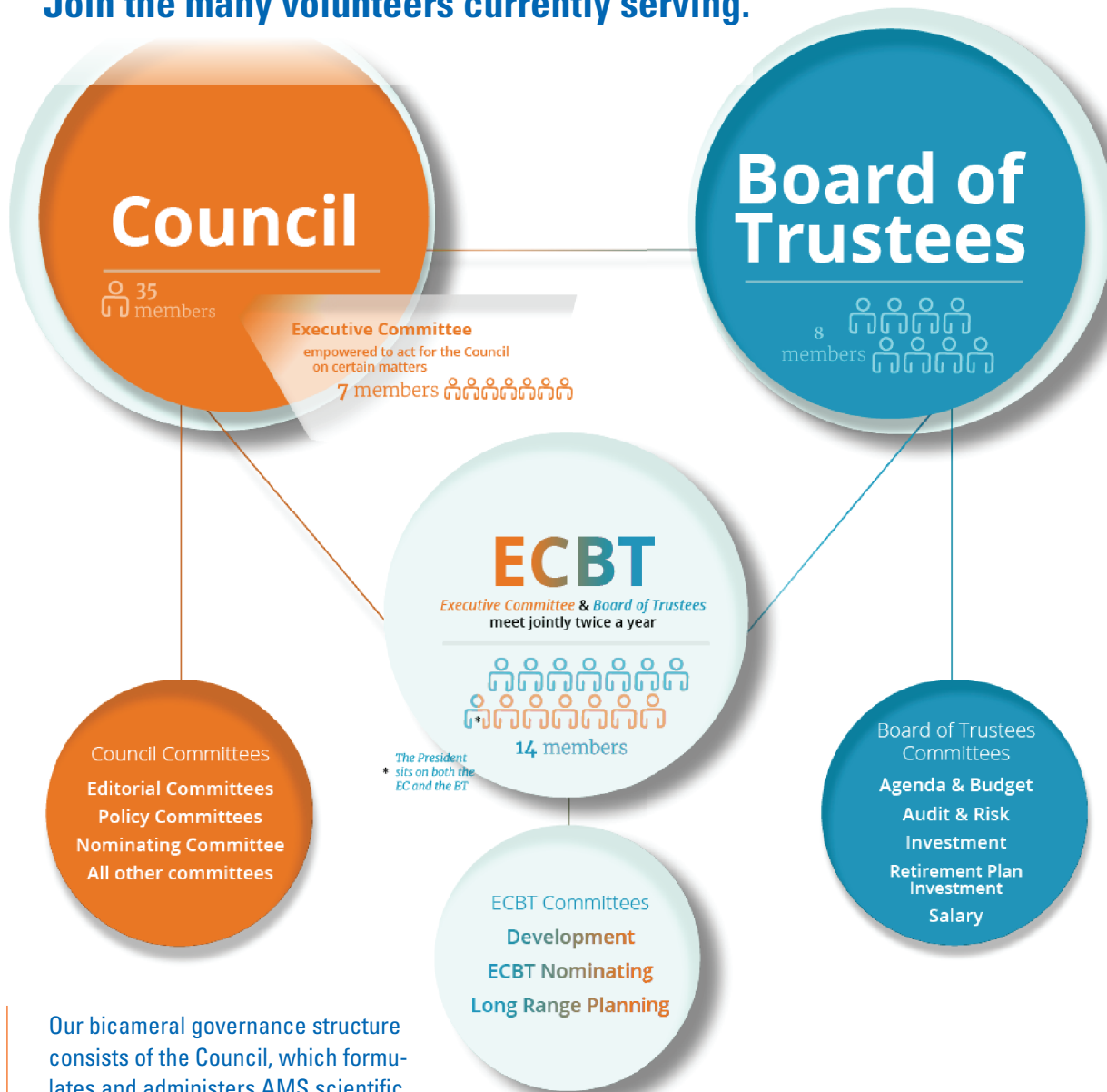


# See yourself in AMS Governance.

Join the many volunteers currently serving.



Our bicameral governance structure consists of the Council, which formulates and administers AMS scientific policies, and the Board of Trustees, which receives and administers the funds of the Society.

Governance Leadership consists of Officers, the Council, Executive Committee of the Council, and Board of Trustees.

The Council and Board of Trustees are advised by nearly 100 specialized Committees.

