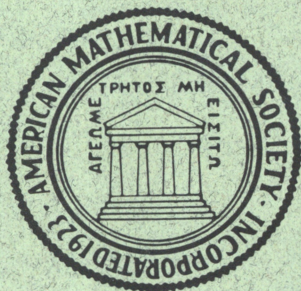


Mathematics of Computation



EDITED BY

James H. Bramble
Bille C. Carlson
Walter Gautschi, *Managing Editor*
Donald Goldfarb
Eugene Isaacson
Heinz-Otto Kreiss
James N. Lyness
Morris Newman
Frank W. J. Olver
John E. Osborn
Stanley Osher
Beresford Parlett
Philip Rabinowitz
Ridgway Scott
Daniel Shanks
Frank Stenger
Hans J. Stetter
G. W. Stewart
Vidar C. Thomée
Lars B. Wahlbin
Hugh C. Williams
John W. Wrench, Jr.

October 1984

Volume 43, Number 168, Pages 349–632

**Published by the American Mathematical Society
Providence, Rhode Island USA**

ISSN 0025-5718

Editorial Committee

WALTER GAUTSCHI, Chairman, Dept. of Computer Sciences, Purdue Univ., West Lafayette, IN 47907

JOHN E. OSBORN, Dept. of Mathematics, Univ. of Maryland, College Park, MD 20742

DANIEL SHANKS, Dept. of Mathematics, Univ. of Maryland, College Park, MD 20742

HUGH C. WILLIAMS, Dept. of Computer Science, Univ. of Manitoba, Winnipeg, Manitoba, Canada R3T 2N2

Technical Editor

MIRIAM E. PORILE, Dept. of Computer Sciences, Purdue Univ., West Lafayette, IN 47907

Board of Associate Editors

JAMES H. BRAMBLE, Dept. of Mathematics, Cornell Univ., Ithaca, NY 14853

BILLE C. CARLSON, Dept. of Mathematics, Iowa State Univ., Ames, IA 50011

DONALD GOLDFARB, Dept. of Industrial Engineering and Operations Research, Seely W. Mudd Building,
Columbia Univ. in the City of New York, New York, NY 10027

EUGENE ISAACSON, Courant Institute of Mathematical Sciences, New York Univ., 251 Mercer Street, New
York, NY 10012

HEINZ-OTTO KREISS, Dept. of Applied Mathematics, California Institute of Technology, Pasadena, CA
91125

JAMES N. LYNESS, Argonne National Laboratory, 9700 South Cass Avenue, Argonne, IL 60439

MORRIS NEWMAN, Dept. of Mathematics, Univ. of California, Santa Barbara, CA 93106

FRANK W. J. OLVER, Inst. for Physical Science and Technology, Univ. of Maryland, College Park, MD 20742

STANLEY OSHER, Dept. of Mathematics, Univ. of California, Los Angeles, CA 90024

BERESFORD PARLETT, Dept. of Mathematics, Univ. of California, Berkeley, CA 94720

PHILIP RABINOWITZ, Dept. of Applied Mathematics, The Weizmann Institute of Science, Rehovot, Israel

RIDGWAY SCOTT, Dept. of Mathematics, Univ. of Michigan, Ann Arbor, MI 48109

FRANK STENGER, Dept. of Mathematics, Univ. of Utah, Salt Lake City, UT 84112

HANS J. STETTER, Institut für Numerische Mathematik, Technische Universität Wien, Karlsplatz 13, A-1040,
Wien, Austria

G. W. STEWART, Dept. of Computer Science, Univ. of Maryland, College Park, MD 20742

VIDAR C. THOMÉE, Mathematics Dept., Chalmers Univ. of Technology, Göteborg, Sweden

LARS B. WAHLBIN, Dept. of Mathematics, Cornell Univ., Ithaca, NY 14853

JOHN W. WRENCH, JR., 6310 Jefferson Blvd., Frederick, MD 21701

SUBSCRIPTION INFORMATION: MATHEMATICS OF COMPUTATION is published quarterly, with issues numbered serially since Volume 1, Number 1. Subscription prices for Volumes 42 and 43 (1984) are \$100.00 list; \$75.00 institutional member; \$50.00 member of CBMS organizations; \$40.00 individual AMS member. A late charge of 10% of the subscription price will be imposed upon orders received from nonmembers after January 1 of the subscription year. Subscribers outside the United States and India must pay a postage surcharge of \$5.00; subscribers in India must pay a postage surcharge of \$8.00. Combination paper and microfiche subscription prices are \$133.00 list; \$100.00 institutional member; \$67.00 member of CBMS organizations; \$53.00 individual AMS member. Microfiche of each issue will be mailed the fastest way before the issue is mailed by the printer.

BACK NUMBER INFORMATION: Back number prices *per volume* are for Volumes 1–21, \$80.00 list, \$60.00 member; for Volumes 22–33, \$120.00 list, \$90.00 member; for Volumes 34–41, \$80.00 list, \$60.00 member. Back volumes may be purchased on microfilm or microfiche from University Microfilms International, 300 North Zeeb Road, Ann Arbor, MI 48106.

UNPUBLISHED MATHEMATICAL TABLES: The editorial office of the journal maintains a repository of Unpublished Mathematical Tables (UMT). When a table is deposited in the UMT repository a brief summary of its contents is published in the section *Reviews and Descriptions of Tables and Books*. Upon request, the chairman of the editorial committee will supply copies of any table for a nominal cost per page. All tables and correspondence concerning the UMT should be sent to Walter Gautschi, Chairman, Editorial Committee, Mathematics of Computation, Department of Computer Sciences, Purdue University, West Lafayette, IN 47907.

Orders for subscriptions and publications of the American Mathematical Society should be addressed to the AMS, P.O. Box 1571, Annex Station, Providence, RI 02901. *All orders must be accompanied by payment.* Other correspondence should be addressed to P.O. Box 6248, Providence, RI 02940.

MATHEMATICS OF COMPUTATION is published quarterly by the American Mathematical Society, 201 Charles Street, Providence, RI 02904. Second-class postage is paid at Providence, Rhode Island, and additional mailing offices. Postmaster: Send address changes to Mathematics of Computation, American Mathematical Society, P.O. Box 6248, Providence, RI 02940.

Copyright © 1984, American Mathematical Society

Printed in the United States of America

The paper used in this journal is acid-free and falls within the guidelines established to ensure permanence and durability.

MATHEMATICS OF COMPUTATION

TABLE OF CONTENTS

October 1984

Obituary — Yudell L. Luke 1918–1983	349
Eitan Tadmor , The Large-Time Behavior of the Scalar, Genuinely Nonlinear Lax-Friedrichs Scheme	353
Eitan Tadmor , Numerical Viscosity and the Entropy Condition for Conserva- tive Difference Schemes	369
Laurence A. Bales , Semidiscrete and Single Step Fully Discrete Approxima- tions for Second Order Hyperbolic Equations With Time-Dependent Coefficients	383
Mark J. Friedman , Finite Element Formulation of the General Magnetostatic Problem in the Space of Solenoidal Vector Functions	415
Joseph E. Pasciak , A New Scalar Potential Formulation of the Magnetostatic Field Problem	433
Mark J. Friedman and Joseph E. Pasciak , Spectral Properties for the Magneti- zation Integral Operator	447
P. P. B. Eggermont , Approximation Properties of Quadrature Methods for Volterra Integral Equations of the First Kind	455
Werner C. Rheinboldt , Differential-Algebraic Systems as Differential Equations on Manifolds	473
G. W. Stewart , On the Asymptotic Behavior of Scaled Singular Value and QR Decompositions	483
Stephen Demko, William F. Moss and Philip W. Smith , Decay Rates for Inverses of Band Matrices	491
A. McCurdy, K. C. Ng and B. N. Parlett , Accurate Computation of Divided Differences of the Exponential Function	501
B. L. R. Shawyer , Best Approximation of Positive Power Series	529
Nira Dyn , Composite Hermite-Birkhoff Quadrature Formulas of Gaussian Type	535
J. Kautsky and S. Elhay , Gauss Quadratures and Jacobi Matrices for Weight Functions Not of One Sign	543
J. N. Newman , Approximations for the Bessel and Struve Functions	551
Henry E. Fettis , More Trigonometric Integrals	557
Enrico Spoletini , Generation of Permutations Following Lehmer and Howell	565
W. Plesken and W. Hanrath , The Lattices of Six-Dimensional Euclidean Space	573
Robert Grone and Russell Merris , An Algorithm for the Second Immanant .	589
David W. Boyd , Pisot Numbers in the Neighborhood of a Limit Point. II....	593

Richard H. Hudson , Products and Sums of Powers of Binomial Coefficients mod p and Solutions of Certain Quaternary Diophantine Systems.....	603
Reviews and Descriptions of Tables and Books	615
Churchhouse, Editor 8, Vichnevetsky and Bowles 9, Morris 10, Chvátal 11, Lakshmikantham, Editor 12, van Hulzen, Editor 13, Uspensky 14	
Corrigenda	621
Vaughan, Godwin	
Indices to Volumes XLII and XLIII	623
Supplement to “Semidiscrete and Single Step Fully Discrete Approximations for Second Order Hyperbolic Equations with Time-Dependent Coefficients” by Laurence A. Bales	S1
Microfiche Supplement	
W. Plesken and W. Hanrath , The Lattices of Six-Dimensional Euclidean Space	

Information for Contributors

Manuscripts should be typewritten double-spaced in the format used by the journal. For journal abbreviations, see the latest *Mathematical Reviews* volume index. An author should submit the original and two copies of the manuscript and retain one copy. The author may suggest an appropriate editor for his paper. It is recommended that the author acquaint himself with the pertinent material contained in “A Manual for Authors of Mathematical Papers,” which is available from the American Mathematical Society. All contributions intended for publication and all books for review should be addressed to Walter Gautschi, Chairman, Editorial Committee, Mathematics of Computation, Department of Computer Sciences, Purdue University, West Lafayette, Indiana 47907. The date received, which is published with the final version of an accepted paper, is the date received in the office of the Chairman of the Editorial Committee, and it is the responsibility of the author to submit manuscripts directly to this office. Institutions sponsoring research reported in the journal are assessed page and microfiche charges.

Each article submitted for publication must be accompanied by a brief and reasonably self-contained abstract, and by 1980 *Mathematics Subject Classification* numbers. If a list of key words and phrases is included, it will be printed as a footnote on the first page. A list of the classification numbers may be found in the 1978 Subject Index to Mathematical Reviews.

The research journals of the American Mathematical Society carry a page charge of \$50.00 per page to help defray the cost of publication. This amount is charged to the institution or to a contract supporting the research reported in the published paper. The publication charge policy of the United States Federal Council for Science and Technology (FCST) is reported on page 112 of the February, 1975 issue of the NOTICES of the American Mathematical Society. In no case is the author personally responsible for paying the page charge, nor is acceptance of the author’s paper for publication dependent upon payment of the page charge.

Copying and Reprinting

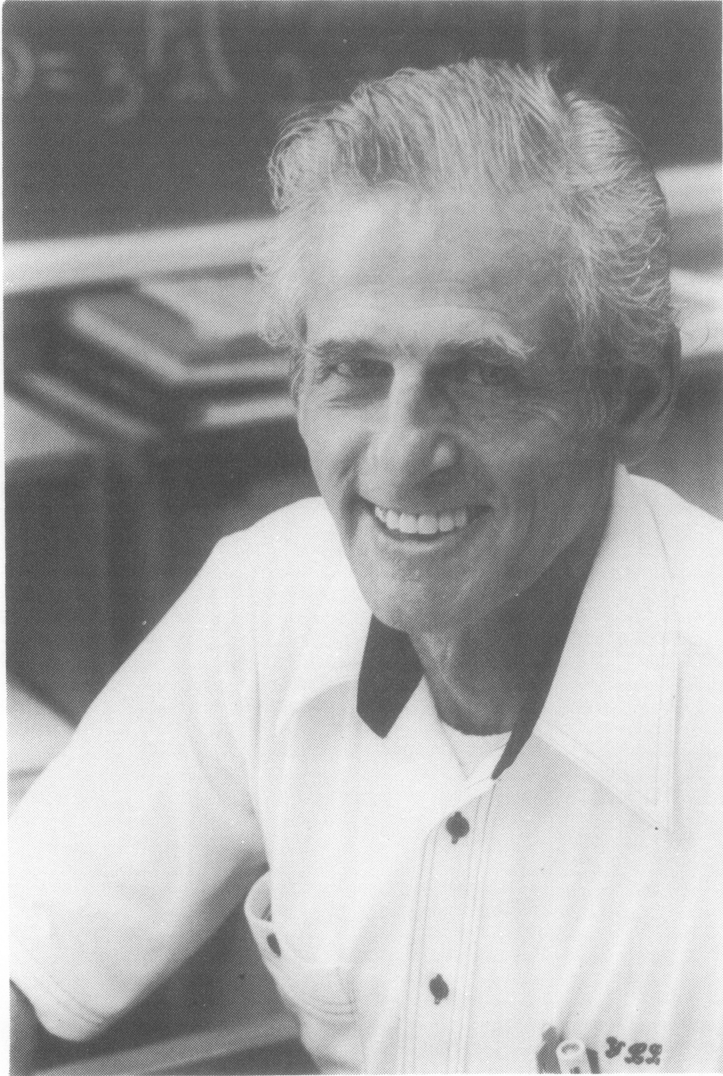
Individual readers of this publication, and nonprofit libraries acting for them, are permitted to make fair use of the material, such as to copy an article for use in teaching or research. Permission is granted to quote brief passages from this publication in reviews provided the customary acknowledgement of the source is given.

Republication, systematic copying, or multiple reproduction of any material in this publication (including abstracts) is permitted only under license from the American Mathematical Society. Requests for such permission should be addressed to the Executive Director, American Mathematical Society, P. O. Box 6248, Providence, Rhode Island 02940.

The appearance of the code on the first page of an article in this journal indicates the copyright owner’s consent for copying beyond that permitted by Sections 107 or 108 of the U. S. Copyright Law, provided that the fee of \$1.00 plus \$.25 per page for each copy be paid directly to Copyright Clearance Center, Inc., 21 Congress Street, Salem, Massachusetts 01970. This consent does not extend to other kinds of copying, such as copying for general distribution, for advertising or promotion purposes, for creating new collective works, or for resale.

Our colleague, Yudell L. Luke, passed away unexpectedly on May 6, 1983, shortly before his 65th birthday. Professor Luke has served as an Associate Editor of *Mathematics of Computation* for over 23 years. He has contributed many of his own papers, and numerous reviews, to this journal and was instrumental in compiling the Cumulative Index of Volumes 1–23, published in 1969. His loyalty and dedication to this journal have been inspirational to all of us. His expertise, especially in the area of special functions, will be greatly missed.

THE EDITORS



YUDELL L. LUKE, 1918-1983

FAST ACCESS TO MATHEMATICAL LITERATURE

Searching the literature
of mathematics by computer

MATHFILE can save you
hours of labor and help you
to stay informed

THE DATABASE

WHAT IS MATHFILE?

- Mathematical Reviews (MR) on tape, beginning with Volume 45 (1973)
Contents of the 1973-1979 MR Cumulative Index
Reviews from all monthly MR issues, beginning with Volume 58 (July 1979)

Complete

- complete review text, including mathematical expressions in literalized form (beginning with July 1979)
- complete MR subject classification codes (primary and secondary) of each review
- classification description for each code

Convenient

- It's fast: desired citations are obtained in minutes.
- You can get results online at your terminal, or order prints offline.
- It's current: online update available before the printed MR issue.

Flexible

You can search on:

- author, co-author, editor, contributor, translator
- name of reviewer
- title words
- primary or secondary classification codes
- classification words
- any word in the review text (July 1979 -)
- literalized symbols
- journal name
- language of original article or book
- publication year of article or book
- issue of MR
- ANY COMBINATION of the above, using boolean logic

You can print or display

- the count of entries
- one, some, or all citations
- complete MR record, with review (July 1979 -)
- bibliographic citation without review
- MR number only

THE COMPUTER SYSTEM

How Do I Use MATHFILE?

- You can request a search through the library at your institution; librarians are trained to do online searches quickly and efficiently.
- You yourself can search using a terminal (or microcomputer) with a coupler or modem, and a telephone.

Where Is MATHFILE Available?

MATHFILE is available from three system suppliers (vendors) which offer a variety of databases to the public:

Bibliographic Retrieval Services (BRS)
1200 Route 7, Latham, NY 12110
(800) 833-4707, (518) 783-1161 in New York

DIALOG Retrieval Services
3460 Hillview Avenue
Palo Alto, CA 94304
(800) 227-1927, (800) 982-5838 in California
(415) 858-3785

(over)

and

ESA-IRS
ESRIN, Via Galileo Galilei
00044 Frascati (Rome), Italy
Tel. (06)94011, Telex 610637 esrin i

Which is Best For Me?

- Each vendor uses its own command language and software.
- Your librarian-searcher can explain the differences and help you decide.
- BRS/AFTER DARK and DIALOG's Knowledge Index are designed for searches by untrained users, without need for prior instruction.

How Much Does MATHFILE Cost?

- BRS and DIALOG are \$42-\$63/hour plus \$7/hour telephone charge.
- Long lists of citations printed offline can be ordered at \$0.25 - \$0.38/record.
- BRS/AFTER DARK, available from 6 p.m. to 4 a.m. and weekends, costs \$13/hour, after a one-time initial fee of \$75 (includes a manual).
- Knowledge Index is \$24/hour, after an initial fee of \$35 (includes 2 hours free time and a manual).

WHAT COMPUTERIZED SEARCHING CAN DO FOR YOU

Within minutes MATHFILE can list:

- articles, books, or conference proceedings on any subject(s), broad or narrow
- papers written by an author or group of authors
- reviews by a specific reviewer
- works published in a given journal, or proceedings volume, or by a given publisher

- works published in a certain language or works NOT in that language
- papers with a word or combination of words in title and/or review
- papers assigned a specific primary or secondary classification code

Typical Questions MATHFILE Can Answer

- How many of my papers have been reviewed by MR?
- What are the most recent papers on the "monster" group?
- How many reviews have I written for MR since 1973?
- Did MR review Connor's article on the species-area relationship, published in The American Naturalist (1979)?
- Who is the publisher of "Orthogonal Designs" by A. Geramita?
- What methods (other than branch and bound) are used in the travelling salesman problem? I am interested only in articles written in English, or those with an English summary.

CAN I GET THE ORIGINAL DOCUMENTS?

Mathematical Reviews offers a document delivery service which will provide copies of articles it has reviewed.

Orders can be placed

- online through DIALOG (Dialorder) or BRS (Electronic Mail)
- directly with Mathematical Reviews (by mail or telephone)

Speedy Delivery

- orders filled and mailed within 48 hours of receipt by MR or
- forwarded to the appropriate library for inter-library loan

Cost

- \$12 for the first 10 pages, or less, and \$2 for each succeeding 10 pages, per article request
- copyright royalties added in compliance with the Copyright Clearance Center regulations

MATHFILE and User Aids:

Taissa T. Kusma, Database Specialist
American Mathematical Society
P.O. Box 6248
Providence, RI 02940

Call toll free (800) 556-7774 or (401) 272-9500

Document Delivery and MR:

Bonita D. Ross, Librarian
Mathematical Reviews
P.O. Box 8604
Ann Arbor, MI 48107

Telephone: (313) 764-7228

(Continued from back cover)

Richard H. Hudson , Products and Sums of Powers of Binomial Coefficients mod p and Solutions of Certain Quaternary Diophantine Systems.....	603
Reviews and Descriptions of Tables and Books	615
Churchhouse, Editor 8 , Vichnevetsky and Bowles 9 , Morris 10 , Chvátal 11 , Lakshmikantham, Editor 12 , van Hulzen, Editor 13 , Uspensky 14	
Corrigenda	621
Vaughan, Godwin	
Indices to Volumes XLII and XLIII	623
Supplement to “Semidiscrete and Single Step Fully Discrete Approximations for Second Order Hyperbolic Equations with Time-Dependent Coefficients” by Laurence A. Bales	S1
Microfiche Supplement	
W. Plesken and W. Hanrath , The Lattices of Six-Dimensional Euclidean Space	

MATHEMATICS OF COMPUTATION
TABLE OF CONTENTS

October 1984

Obituary — Yudell L. Luke 1918–1983	349
Eitan Tadmor , The Large-Time Behavior of the Scalar, Genuinely Nonlinear Lax-Friedrichs Scheme	353
Eitan Tadmor , Numerical Viscosity and the Entropy Condition for Conserva- tive Difference Schemes	369
Laurence A. Bales , Semidiscrete and Single Step Fully Discrete Approxima- tions for Second Order Hyperbolic Equations With Time-Dependent Coefficients	383
Mark J. Friedman , Finite Element Formulation of the General Magnetostatic Problem in the Space of Solenoidal Vector Functions	415
Joseph E. Pasciak , A New Scalar Potential Formulation of the Magnetostatic Field Problem	433
Mark J. Friedman and Joseph E. Pasciak , Spectral Properties for the Magneti- zation Integral Operator	447
P. P. B. Eggermont , Approximation Properties of Quadrature Methods for Volterra Integral Equations of the First Kind	455
Werner C. Rheinboldt , Differential-Algebraic Systems as Differential Equations on Manifolds	473
G. W. Stewart , On the Asymptotic Behavior of Scaled Singular Value and QR Decompositions	483
Stephen Demko, William F. Moss and Philip W. Smith , Decay Rates for Inverses of Band Matrices	491
A. McCurdy, K. C. Ng and B. N. Parlett , Accurate Computation of Divided Differences of the Exponential Function	501
B. L. R. Shawyer , Best Approximation of Positive Power Series	529
Nira Dyn , Composite Hermite-Birkhoff Quadrature Formulas of Gaussian Type	535
J. Kautsky and S. Elhay , Gauss Quadratures and Jacobi Matrices for Weight Functions Not of One Sign	543
J. N. Newman , Approximations for the Bessel and Struve Functions	551
Henry E. Fettis , More Trigonometric Integrals	557
Enrico Spoletini , Generation of Permutations Following Lehmer and Howell	565
W. Plesken and W. Hanrath , The Lattices of Six-Dimensional Euclidean Space	573
Robert Grone and Russell Merris , An Algorithm for the Second Immanant	589
David W. Boyd , Pisot Numbers in the Neighborhood of a Limit Point. II....	593

(Continued on inside back cover)