

St. Petersburg Mathematical Journal

(Formerly Leningrad Mathematical Journal)

Volume 29 Number 1 February 2018

A Translation of

РОССИЙСКАЯ АКАДЕМИЯ НАУК

АЛГЕБРА
И
АНАЛИЗ

ТОМ 29 № 1 2017



AMERICAN
MATHEMATICAL
SOCIETY

Providence, Rhode Island USA

ST. PETERSBURG MATHEMATICAL JOURNAL

(Formerly Leningrad Mathematical Journal)

A translation of the Russian bimonthly

Алгебра и анализ

“Наука”, С.-Петербургское отделение, 2017 г.

Editor-in-Chief: S. V. Kislyakov

Editorial Board

A. B. Aleksandrov

A. D. Baranov

(Executive Secretary)

S. V. Buyalo

I. A. Dymnikov

A. E. Litvak

A. V. Maljutin

N. K. Nikol'skiĭ

I. A. Panin

A. N. Parshin

F. V. Petrov

M. A. Semenov-Tyan-Shanskiĭ

T. A. Suslina

(Deputy Editor-in-Chief)

A. L. Chistov

A. V. Yakovlev

Advisory Board: A. N. Andrianov, V. M. Babich, O. Ya. Viro, N. Yu. Netsvetaev, and A. A. Suslin

SUBSCRIPTION INFORMATION. The 2018 subscription is for one volume of six issues. Beginning in 2004, *St. Petersburg Mathematical Journal* is accessible from www.ams.org/journals/. Subscription prices for Volume 29 are as follows: for paper delivery, US\$2554 list, US\$2043.20 institutional member; for electronic delivery, US\$2426 list, US\$1940 institutional member. Upon request, subscribers to paper delivery of this journal are also entitled to receive electronic delivery. If ordering the paper version, add US\$9 for delivery within the United States; US\$20 for delivery outside the United States. Subscription renewals are subject to late fees. See www.ams.org/journal-faq for more journal subscription information.

BACK NUMBER INFORMATION. For back issues see www.ams.org/backvols.

Orders for subscriptions and publications of the American Mathematical Society should be addressed to the American Mathematical Society, P.O. Box 845904, Boston, MA 02284-5904 USA. *All orders must be accompanied by payment.* Other correspondence should be addressed to 201 Charles Street, Providence, RI 02904-2294 USA.

COPYING AND REPRINTING. Individual readers of this publication, and nonprofit libraries acting for them, are permitted to make fair use of the material, such as to copy an article for use in teaching or research. Permission is granted to quote brief passages from this publication in reviews, provided the customary acknowledgment of the source is given.

Republication, systematic copying, or multiple reproduction of any material in this publication is permitted only under license from the American Mathematical Society. Permissions to reuse portions of AMS publication content are handled by Copyright Clearance Center's RightsLink[®] service. For more information, please visit: <http://www.ams.org/rightslink>.

Translation rights and licensed reprint requests should be sent to:

reprint-permission@ams.org.

Excluded from these provisions is material in articles for which the author holds copyright. In such cases, requests for permission to use or reprint should be addressed directly to the author(s). (Copyright ownership is indicated in the notice in the lower right-hand corner of the first page of each article.)

St. Petersburg Mathematical Journal (ISSN 1061-0022 (print); ISSN 1547-7371 (online)) is published bimonthly by the American Mathematical Society, 201 Charles Street, Providence, RI 02904-2294 USA. Periodicals postage paid at Providence, Rhode Island. Postmaster: Send address changes to St. Petersburg Mathematical Journal, American Mathematical Society, 201 Charles Street, Providence, RI 02904-2294 USA.

Manuscripts should be addressed to “Algebra i Analiz”, St. Petersburg Publishing Company of the Russian Academy of Sciences, Mendeleevskaya Liniya 1, St. Petersburg 199034, Russia. Submitting simultaneously a tex-file to the address pmj@pdmi.ras.ru is highly appreciated.

© 2018 American Mathematical Society. All rights reserved.

This journal is indexed in *Mathematical Reviews* and *Zentralblatt MATH*.

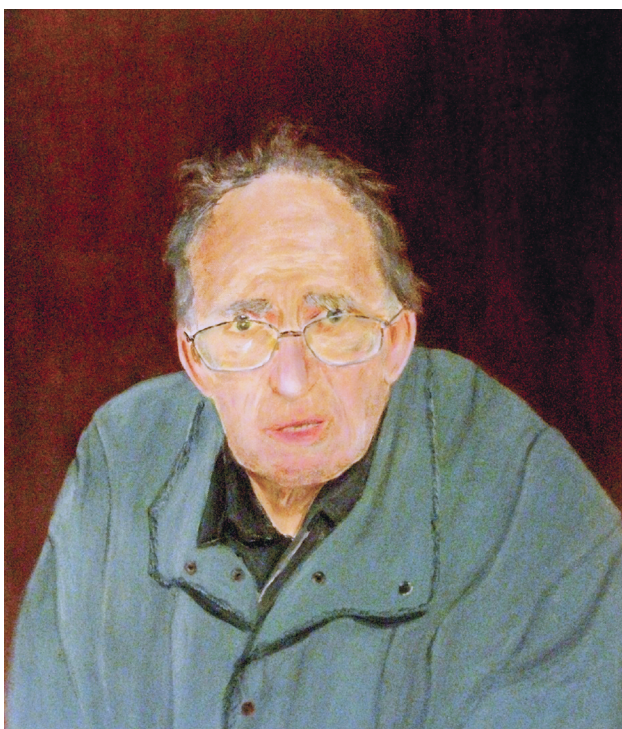
This journal is archived in *Portico* and in *CLOCKSS*.

Translation authorized by the All-Union Agency for Author's Rights, Moscow.

Printed in the United States of America.

⊗ The paper used in this journal is acid-free and falls within the guidelines established to ensure permanence and durability.

10 9 8 7 6 5 4 3 2 1 23 22 21 20 19 18



The Editorial Board of "Algebra i Analiz" heartily congratulates
Yu. D. Burago on his anniversary.

St. Petersburg Mathematical Journal

Volume 29 Number 1 February 2018

A Translation of

РОССИЙСКАЯ АКАДЕМИЯ НАУК

АЛГЕБРА

И

АНАЛИЗ

ТОМ 29 № 1 2017



AMERICAN
MATHEMATICAL
SOCIETY

Providence, Rhode Island USA

ST. PETERSBURG MATHEMATICAL JOURNAL

(Formerly Leningrad Mathematical Journal)

A translation of the Russian bimonthly

Алгебра и анализ

“Наука”, С.-Петербургское отделение, 2017 г.

Editor-in-Chief: S. V. Kislyakov

Editorial Board

A. B. Aleksandrov

A. D. Baranov

(Executive Secretary)

S. V. Buyalo

I. A. Dymnikov

A. E. Litvak

A. V. Malyutin

N. K. Nikol'skiĭ

I. A. Panin

A. N. Parshin

F. V. Petrov

M. A. Semenov-Tyan-Shanskiĭ

T. A. Suslina

(Deputy Editor-in-Chief)

A. L. Chistov

A. V. Yakovlev

Advisory Board: A. N. Andrianov, V. M. Babich, O. Ya. Viro, N. Yu. Netsvetaev, and A. A. Suslin

SUBSCRIPTION INFORMATION. The 2018 subscription is for one volume of six issues. Beginning in 2004, *St. Petersburg Mathematical Journal* is accessible from www.ams.org/journals/. Subscription prices for Volume 29 are as follows: for paper delivery, US\$2554 list, US\$2043.20 institutional member; for electronic delivery, US\$2426 list, US\$1940 institutional member. Upon request, subscribers to paper delivery of this journal are also entitled to receive electronic delivery. If ordering the paper version, add US\$9 for delivery within the United States; US\$20 for delivery outside the United States. Subscription renewals are subject to late fees. See www.ams.org/journal-faq for more journal subscription information.

BACK NUMBER INFORMATION. For back issues see www.ams.org/backvols.

Orders for subscriptions and publications of the American Mathematical Society should be addressed to the American Mathematical Society, P.O. Box 845904, Boston, MA 02284-5904 USA. *All orders must be accompanied by payment.* Other correspondence should be addressed to 201 Charles Street, Providence, RI 02904-2294 USA.

COPYING AND REPRINTING. Individual readers of this publication, and nonprofit libraries acting for them, are permitted to make fair use of the material, such as to copy an article for use in teaching or research. Permission is granted to quote brief passages from this publication in reviews, provided the customary acknowledgment of the source is given.

Republication, systematic copying, or multiple reproduction of any material in this publication is permitted only under license from the American Mathematical Society. Permissions to reuse portions of AMS publication content are handled by Copyright Clearance Center's RightsLink[®] service. For more information, please visit: <http://www.ams.org/rightslink>.

Translation rights and licensed reprint requests should be sent to:

reprint-permission@ams.org.

Excluded from these provisions is material in articles for which the author holds copyright. In such cases, requests for permission to use or reprint should be addressed directly to the author(s). (Copyright ownership is indicated in the notice in the lower right-hand corner of the first page of each article.)

St. Petersburg Mathematical Journal (ISSN 1061-0022 (print); ISSN 1547-7371 (online)) is published bimonthly by the American Mathematical Society, 201 Charles Street, Providence, RI 02904-2294 USA. Periodicals postage paid at Providence, Rhode Island. Postmaster: Send address changes to St. Petersburg Mathematical Journal, American Mathematical Society, 201 Charles Street, Providence, RI 02904-2294 USA.

Manuscripts should be addressed to “Algebra i Analiz”, St. Petersburg Publishing Company of the Russian Academy of Sciences, Mendeleevskaya Liniya 1, St. Petersburg 199034, Russia. Submitting simultaneously a tex-file to the address pmj@pdmi.ras.ru is highly appreciated.

© 2018 American Mathematical Society. All rights reserved.

This journal is indexed in *Mathematical Reviews* and *Zentralblatt MATH*.

This journal is archived in *Portico* and in *CLOCKSS*.

Translation authorized by the All-Union Agency for Author's Rights, Moscow.

Printed in the United States of America.

⊗ The paper used in this journal is acid-free and falls within the guidelines established to ensure permanence and durability.

10 9 8 7 6 5 4 3 2 1 23 22 21 20 19 18

CONTENTS

D. Burago, My Dad: An Engineer in Math and in the Real World	1
--	---

Research Papers

K. Grove, A panoramic glimpse of manifolds with sectional curvature bounded from below	3
D. Burago, S. Ivanov, and A. Novikov, A survival guide for feeble fish	33
S. Weinberger, A fixed point theorem for periodic maps on locally symmetric manifolds	43
G. Golan and M. Sapir, On the stabilizers of finite sets of numbers in the R. Thompson group F	51
Yu. G. Zarhin, Endomorphism rings of reductions of elliptic curves and abelian varieties	81
B. Klartag, Affine hemispheres of elliptic type	107
N. Lebedeva and A. Petrunin, On the total curvature of minimizing geodesics on convex surfaces	139
V. Maz'ya, Elliptic equations in convex domains	155
V. Milman and L. Rotem, "Irrational" constructions in Convex Geometry ...	165
L. Charles and L. Polterovich, Sharp correspondence principle and quantum measurements	177
R. Schneider, Combinatorial identities for polyhedral cones	209

Easy Reading for Professionals

A. Petrunin, A quest for 5-point condition of Alexandrov's type	223
---	-----

RUSSIAN CONTENTS*

СОДЕРЖАНИЕ

<i>Burago D.</i> My Dad: an engineer in math and in the real world	5
--	---

Обзоры

<i>Grove K.</i> A panoramic glimpse of manifolds with sectional curvature bounded from below	7
--	---

Статьи

<i>Burago D., Ivanov S., Novikov A.</i> A survival guide for feeble fish	49
<i>Weinberger S.</i> A Fixed point theorem for periodic maps on locally symmetric manifolds	60
<i>Golan G., Sapir M.</i> On the stabilizers of finite sets of numbers in the R. Thompson group F	70
<i>Zarhin Yu. G.</i> Endomorphism rings of reductions of elliptic curves and Abelian varieties.	110
<i>Klartag B.</i> Affine hemispheres of elliptic type	145
<i>Lebedeva N., Petrunin A.</i> On the total curvature of minimizing geodesics on convex surfaces	189
<i>Maz'ya V.</i> Elliptic equations in convex domains	209
<i>Milman V., Rotem L.</i> "Irrational" constructions in convex geometry.	222
<i>Charles L., Polterovich L.</i> Sharp correspondence principle and quantum measurements	237
<i>Schneider R.</i> Combinatorial identities for polyhedral cones	279

Легкое чтение для профессионалов

<i>Петрунин А.</i> В поисках пятиточечного условия Александровского типа	296
--	-----

*The American Mathematical Society scheme for transliteration of Cyrillic may be found at the end of index issues of *Mathematical Reviews*.



1061-0022(201802)29:1;1-K